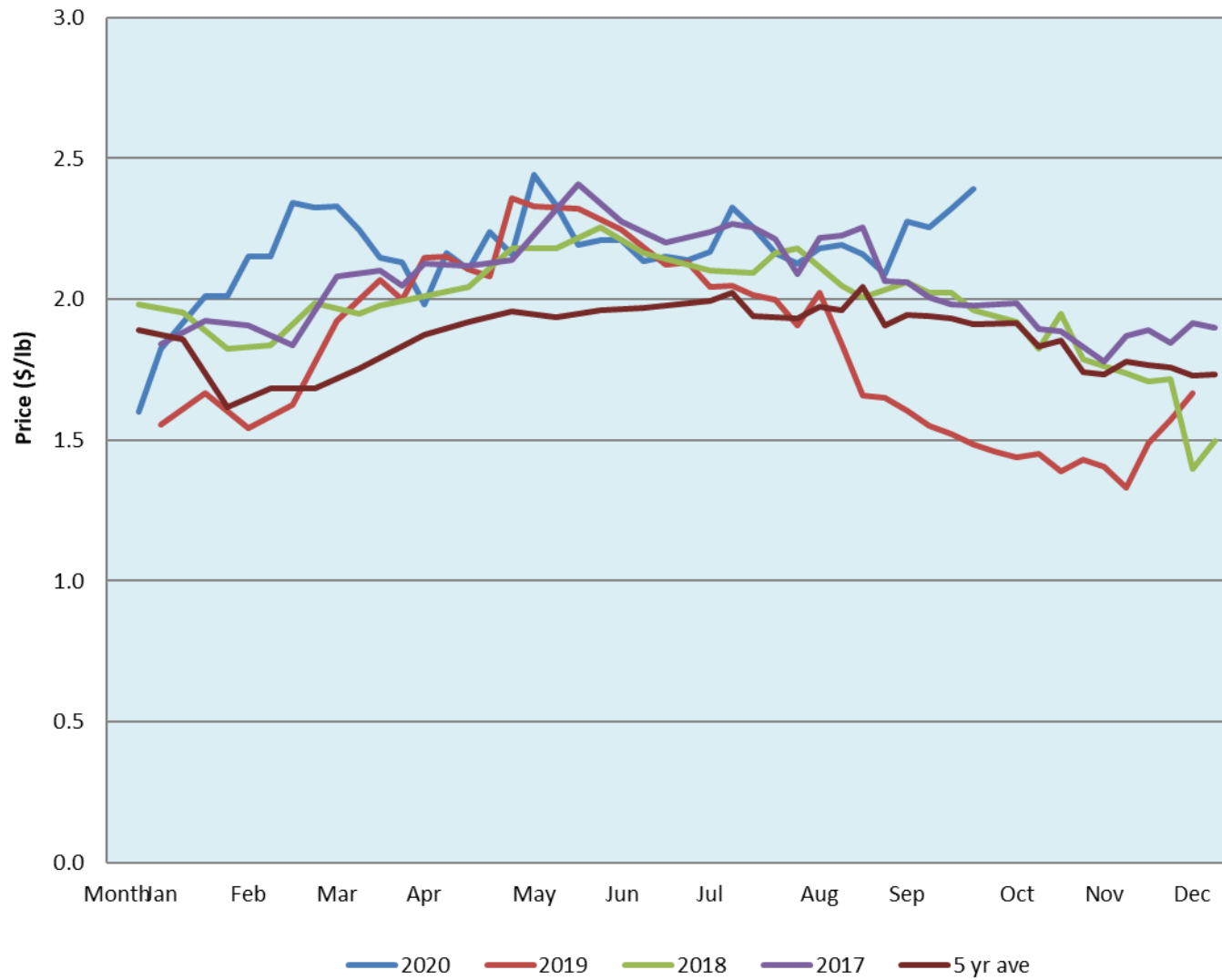


Alberta Live Animal Markets: Visit individual market websites for more information about applicable auction fees and upcoming sales										
Date	Sale	Lambs (\$/lb)		Lambs (\$/lb)		Lambs (\$/lb)		Sheep(\$/lb): Bred ewes \$/hd		Head
		Weight (lbs)	low - high	Weight (lbs)	low - high	Weight (lbs)	low - high		low - high	
5-Oct-20	Beaver Hill www.beaverhillauctions.com	0-54: wool	2.20 - 2.40	70-85: wool	2.35 - 2.60	86-105:wool	2.25 - 2.55	Ewes: wool	1.35 - 1.85	1647
		0-54: hair	1.80 - 2.50			86-105:hair	2.15 - 2.40	Ewes: hair	1.20 - 2.39	
		55-69: wool	2.30 - 2.60	70-85: hair	2.25 - 2.50	106+:wool	2.35 - 2.50	Rams: wool	1.55 - 1.81	
		55-69: hair	2.30 - 2.51			106+:hair	2.10 - 2.35	Rams: hair	1.40 - 1.95	
								Bred Ewes	2 - 3	
						Ewe&Lamb(s)	- - -			
6-Oct-20	VJV Westlock www.vjvauction.com	0-69: wool	1.55 - 2.20	70-85: wool	2.20 - 2.90	86-105: wool	2.20 - 2.90	Ewes: wool	1.00 - 1.44	460
						86-105: hair	- - -	Ewes: hair	- - -	
		0-69: hair	- - -	70-85: hair	- - -	106+: wool	2.10 - 2.80	Rams: wool	1.10 - 1.40	
						106+: hair	- - -	Rams: hair	- - -	
								Bred Ewes:wool	- - -	
						Ewe&Lamb:hair	- - -			
information unavailable	Olds Auction www.oldsauction.com	30-50	- - -	70-80	- - -	90-100	- - -	Ewes	- - -	- (incl.goats)
		50-60	- - -	80-90	- - -	100-110	- - -	Rams	- - -	
		60-70	- - -			110+	- - -	Bred Ewes	- - -	
3-Oct-20	Picture Butte www.picturebutteauction.ca					Feeder	2.05 - 2.53	Slaughter Ewes	1.20 - 1.34	-
						Slaughter	2.23 - 2.44	Feeder Ewes	1.22 - 1.34	
								Ewe&lamb(s)	- - -	
								Bred ewes	- - -	
								Rams	- - -	
Ontario Live Animal Markets										
nation unava	OSI www.ontariosheep.org	0-50	0.00 - 0.00	65-80	0.00 - 0.00	95-110	0.00 - 0.00	Sheep	0.00 - 0.00	0
		50-64	0.00 - 0.00	80-95	0.00 - 0.00	110+	0.00 - 0.00			
6-Oct-20	OLEX www.ontariosheep.org	0-50	2.64 - 3.30	65-79	2.61 - 2.90	95-109	2.43 - 2.80	Sheep	0.00 - 0.00	1969
		50-64	2.78 - 3.03	80-94	2.62 - 2.80	110+	1.35 - 1.80			
28-Sep-20	Embrun www.ontariosheep.org	0-50	1.50 - 2.60	65-79	2.42 - 2.76	95-109	2.30 - 2.50	Sheep	1.12 - 1.37	526
		50-64	2.22 - 2.70	80-94	2.26 - 2.57	110+	1.96 - 2.46			
1-Oct-20	Brussels www.ontariosheep.org	0-50	2.75 - 3.35	65-79	2.85 - 2.95	95-109	2.60 - 2.69	Sheep	1.45 - 2.00	454
		50-64	2.90 - 3.13	80-94	2.67 - 3.00	110+	2.05 - 2.58			
Alberta Lamb Producers does not endorse individual markets or verify prices provided.										

Trends* in auction price for heavy lambs in Alberta



*Due to differences among auctions, prices are reported as 'trends' rather than averages.
 This graph is updated on weeks with two or more markets reporting prices.