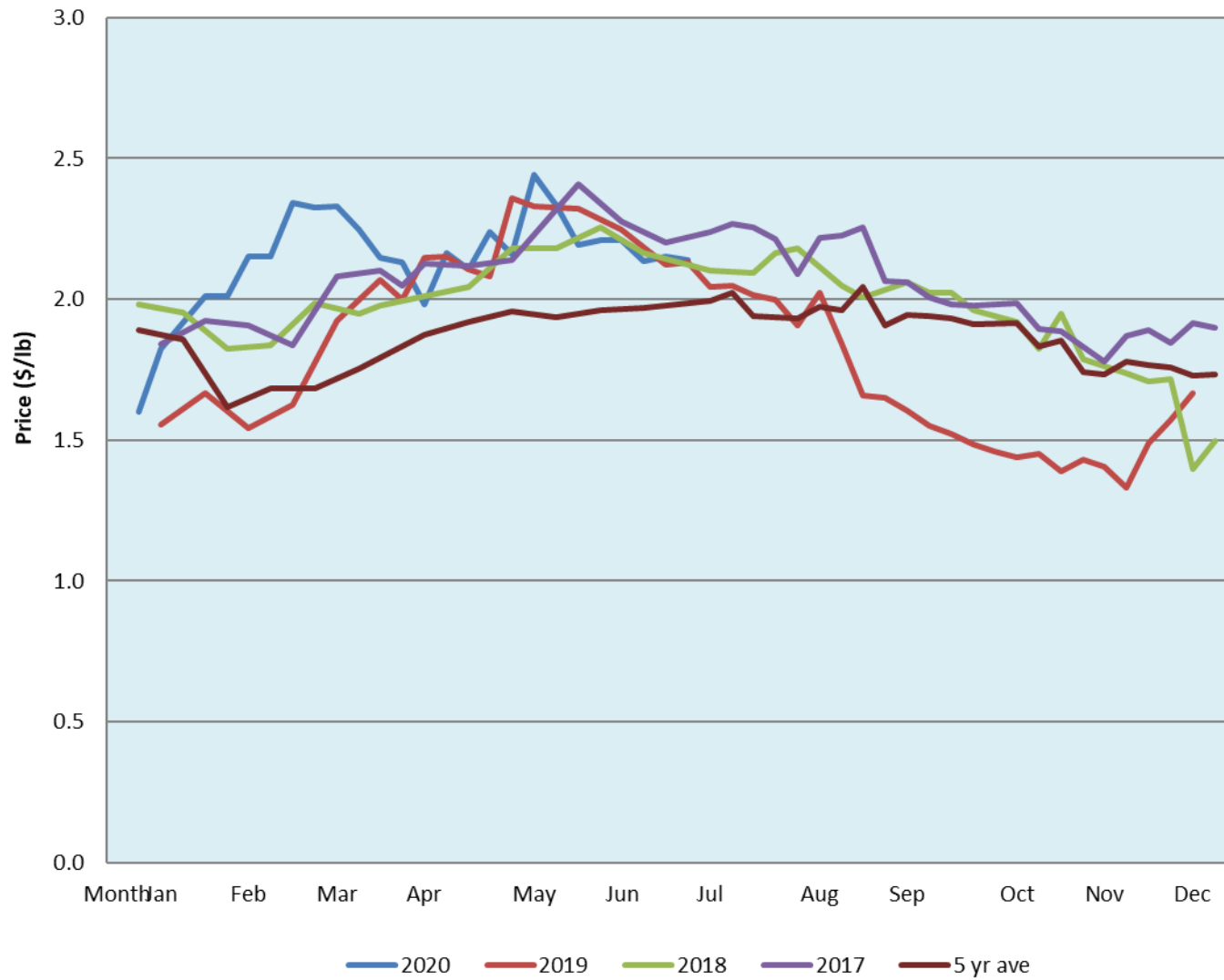


Alberta Live Animal Markets: Visit individual market websites for more information about applicable auction fees and upcoming sales										
Date	Sale	Lambs (\$/lb)		Lambs (\$/lb)		Lambs (\$/lb)		Sheep(\$/lb): Bred ewes \$/hd		Head
		Weight (lbs)	low - high	Weight (lbs)	low - high	Weight (lbs)	low - high		low - high	
6-Jul-20	Beaver Hill <a href="http://www.beaverhillauctions.com">www.beaverhillauctions.com</a>	0-54: wool	1.85 - 2.40	70-85: wool	2.10 - 2.60	86-105:wool	2.10 - 2.40	Ewes: wool	1.25 - 2.15	867
		0-54: hair	1.40 - 1.90			86-105:hair	2.10 - 2.35	Ewes: hair	1.20 - 2.11	
		55-69: wool	2.15 - 2.50	70-85: hair	2.05 - 2.50	106+:wool	2.00 - 2.31	Rams: wool	1.26 - 1.78	
		55-69: hair	2.00 - 2.46			106+:hair	2.00 - 2.20	Rams: hair	1.22 - 2.10	
								Bred Ewes	- - -	
						Ewe&Lamb(s)	- - -			
No sale this week	VJV Westlock <a href="http://www.vjvauction.com">www.vjvauction.com</a>	0-69: wool	- - -	70-85: wool	- - -	86-105: wool	- - -	Ewes: wool	- - -	-
						86-105: hair	- - -	Ewes: hair	- - -	
		0-69: hair	- - -	70-85: hair	- - -	106+: wool	- - -	Rams: wool	- - -	
						106+: hair	- - -	Rams: hair	- - -	
								Bred Ewes:wool	- - -	
						Ewe&Lamb:hair	- - -			
7-Jul-20	Olds Auction <a href="http://www.oldsauction.com">www.oldsauction.com</a>	30-50	2.00 - 2.65	70-80	1.31 - 2.40	90-100	2.22 - 2.40	Ewes	1.12 - 1.69	191 (incl.goats)
		50-60	2.25 - 2.31	80-90	2.38 - 2.42	100-110	2.02 - 2.23	Rams	1.10 - 1.16	
		60-70	1.61 - 2.50			110+	1.26 - 1.98	Bred Ewes	- - -	
27-Jun-20	Picture Butte <a href="http://www.picturebutteauction.ca">www.picturebutteauction.ca</a>					Feeder	2.38 - 2.78	Slaughter Ewes	1.07 - 1.18	-
						Slaughter	2.09 - 2.17	Feeder Ewes	1.18 - 1.33	
								Ewe&lamb(s)	- - -	
								Bred ewes	- - -	
								Rams	- - -	
Ontario Live Animal Markets										
6-Jul-20	OSI <a href="http://www.ontariosheep.org">www.ontariosheep.org</a>	0-50	2.70 - 3.35	65-80	2.94 - 3.30	95-110	2.43 - 2.55	Sheep	1.38 - 2.00	1043
		50-64	2.95 - 3.35	80-95	2.49 - 2.85	110+	1.53 - 2.45			
7-Jul-20	OLEX <a href="http://www.ontariosheep.org">www.ontariosheep.org</a>	0-50	2.85 - 3.40	65-79	2.65 - 3.00	95-109	2.50 - 2.85	Sheep	1.50 - 1.95	2546
		50-64	2.90 - 3.24	80-94	2.55 - 2.88	110+	2.28 - 2.60			
6-Jul-20	Embrun <a href="http://www.ontariosheep.org">www.ontariosheep.org</a>	0-50	2.70 - 3.00	65-79	2.85 - 3.25	95-109	2.75 - 3.10	Sheep	1.75 - 2.22	424
		50-64	2.65 - 3.00	80-94	2.90 - 3.12	110+	2.72 - 2.90			
2-Jul-20	Brussels <a href="http://www.ontariosheep.org">www.ontariosheep.org</a>	0-50	3.05 - 3.32	65-79	2.67 - 2.80	95-109	2.38 - 2.47	Sheep	1.33 - 2.35	430
		50-64	2.90 - 3.40	80-94	2.41 - 2.68	110+	2.40 - 2.50			
Alberta Lamb Producers does not endorse individual markets or verify prices provided.										

### Trends\* in auction price for heavy lambs in Alberta



\*Due to differences among auctions, prices are reported as 'trends' rather than averages.  
This graph is updated on weeks with two or more markets reporting prices.