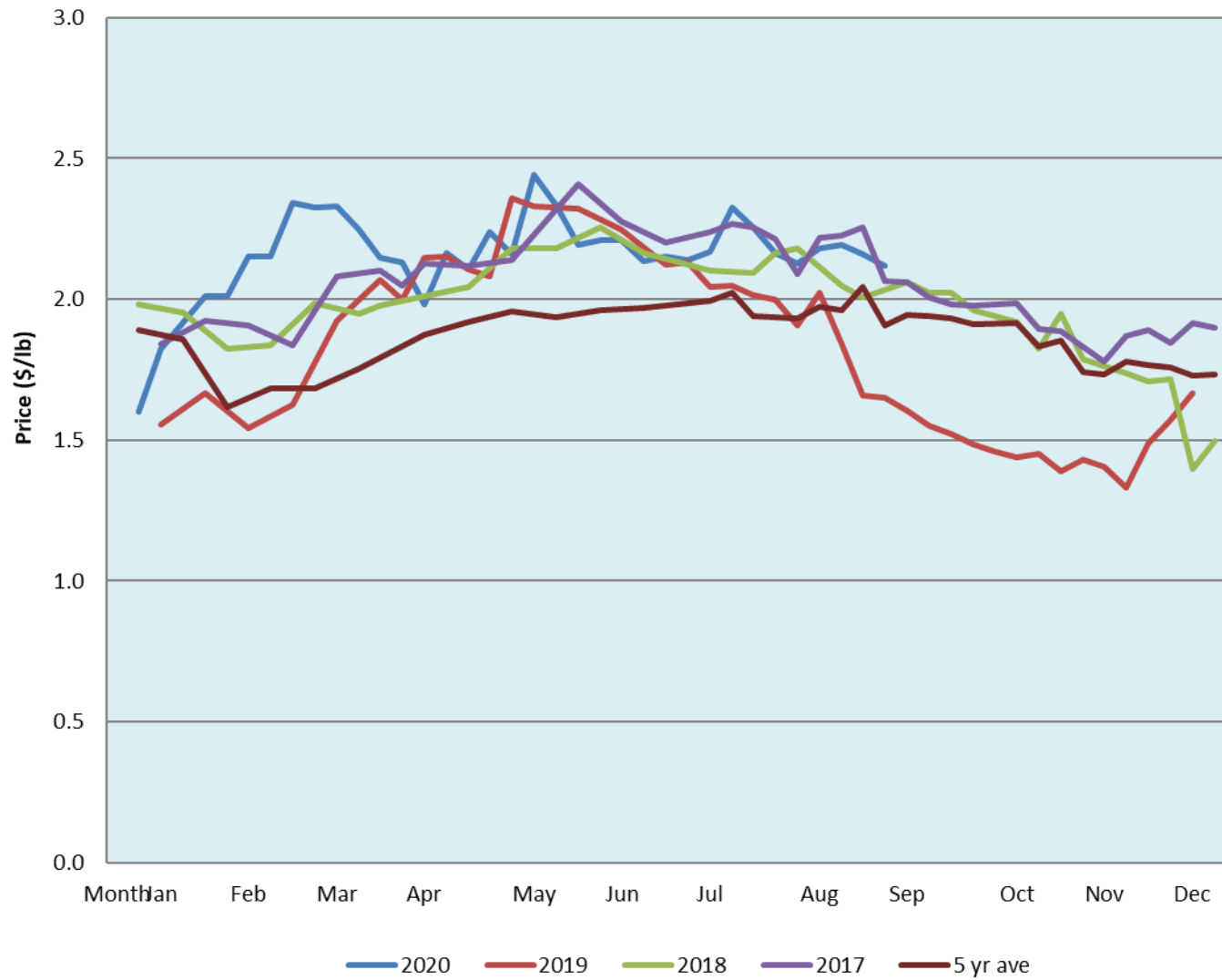


Alberta Live Animal Markets: Visit individual market websites for more information about applicable auction fees and upcoming sales										
Date	Sale	Lambs (\$/lb)		Lambs (\$/lb)		Lambs (\$/lb)		Sheep(\$/lb): Bred ewes \$/hd		Head
		Weight (lbs)	low - high	Weight (lbs)	low - high	Weight (lbs)	low - high		low - high	
No sale this week	Beaver Hill www.beaverhillauctions.com	0-54: wool	- - -	70-85: wool	- - -	86-105:wool	- - -	Ewes: wool	- - -	-
		0-54: hair	- - -			86-105:hair	- - -	Ewes: hair	- - -	
		55-69: wool	- - -	70-85: hair	- - -	106+:wool	- - -	Rams: wool	- - -	
		55-69: hair	- - -			106+:hair	- - -	Rams: hair	- - -	
								Bred Ewes	- - -	
						Ewe&Lamb(s)	- - -			
No sale this week	VJV Westlock www.vjvauction.com	0-69: wool	- - -	70-85: wool	- - -	86-105: wool	- - -	Ewes: wool	- - -	-
						86-105: hair	- - -	Ewes: hair	- - -	
		0-69: hair	- - -	70-85: hair	- - -	106+: wool	- - -	Rams: wool	- - -	
						106+: hair	- - -	Rams: hair	- - -	
								Bred Ewes:wool	- - -	
						Ewe&Lamb:hair	- - -			
8-Sep-20	Olds Auction www.oldsauction.com	30-50	2.22 - 2.83	70-80	2.21 - 2.35	90-100	2.06 - 2.19	Ewes	1.41 - 1.65	283 (incl.goats)
		50-60	2.60 - 2.83	80-90	2.12 - 2.16	100-110	2.08 - 2.16	Rams	1.20 - 1.55	
		60-70	2.61 - 2.83			110+	2.08 - 2.10	Bred Ewes	- - -	
Information unavailable	Picture Butte www.picturebutteauction.ca					Feeder	- - -	Slaughter Ewes	- - -	-
						Slaughter	- - -	Feeder Ewes	- - -	
								Ewe&lamb(s)	- - -	
								Bred ewes	- - -	
								Rams	- - -	
Ontario Live Animal Markets										
7-Sep-20	OSI www.ontariosheep.org	0-50	2.43 - 2.75	65-80	3.05 - 3.15	95-110	2.73 - 2.94	Sheep	1.90 - 2.60	480
		50-64	2.60 - 3.00	80-95	2.88 - 2.95	110+	2.13 - 2.50			
8-Sep-20	OLEX www.ontariosheep.org	0-50	3.08 - 3.30	65-79	2.72 - 3.09	95-109	2.68 - 2.91	Sheep	2.10 - 2.40	2169
		50-64	2.94 - 3.38	80-94	2.64 - 2.90	110+	2.75 - 3.00			
7-Sep-20	Embrun www.ontariosheep.org	0-50	2.00 - 2.20	65-79	2.50 - 2.75	95-109	2.45 - 2.55	Sheep	1.80 - 2.05	553
		50-64	2.40 - 2.90	80-94	2.40 - 2.65	110+	2.30 - 2.90			
3-Sep-20	Brussels www.ontariosheep.org	0-50	2.37 - 3.40	65-79	2.70 - 3.35	95-109	2.76 - 2.84	Sheep	1.80 - 2.40	444
		50-64	2.82 - 2.95	80-94	2.72 - 2.92	110+	2.70 - 2.83			
Alberta Lamb Producers does not endorse individual markets or verify prices provided.										

Trends* in auction price for heavy lambs in Alberta



*Due to differences among auctions, prices are reported as 'trends' rather than averages.
 This graph is updated on weeks with two or more markets reporting prices.