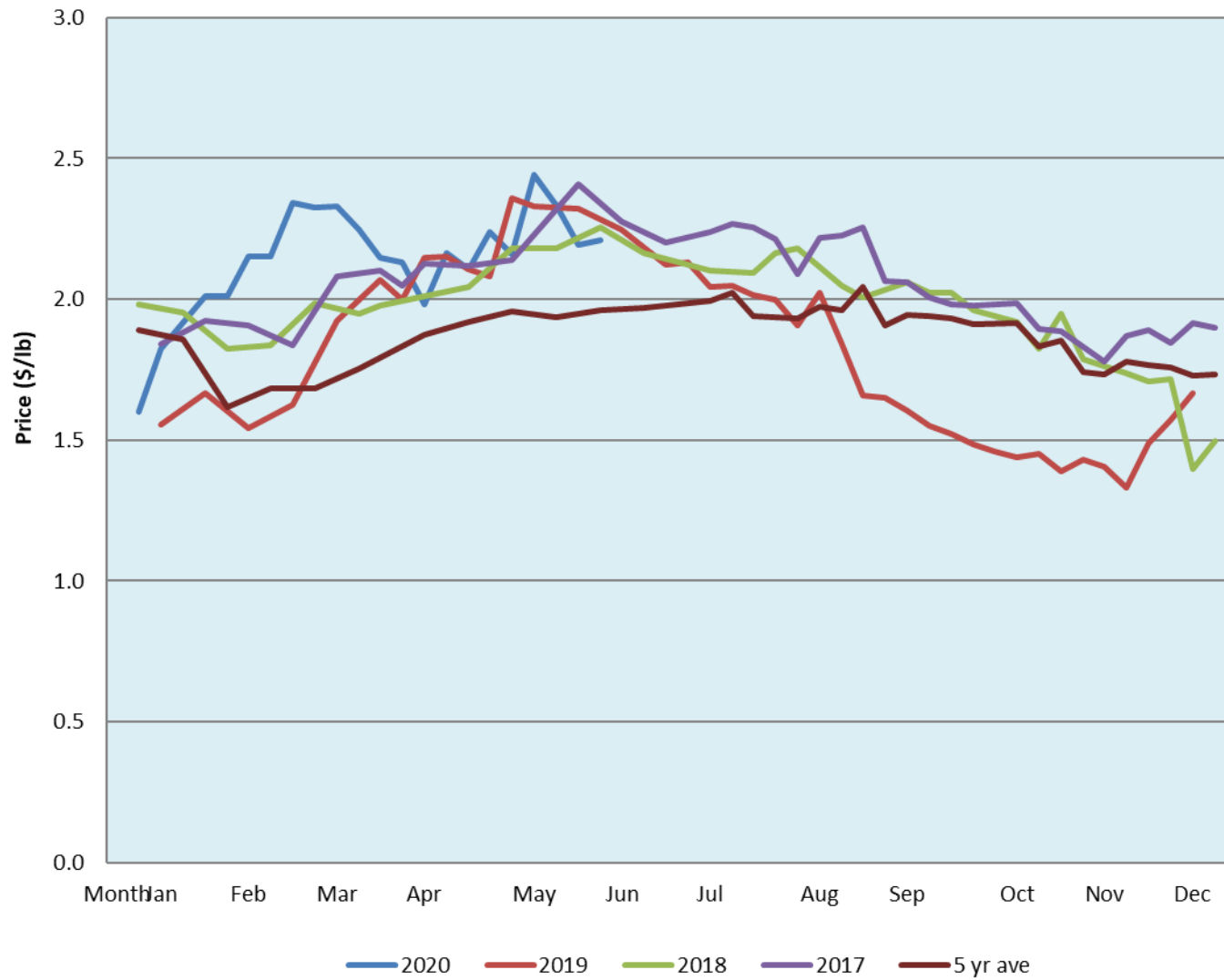


Alberta Live Animal Markets: Visit individual market websites for more information about applicable auction fees and upcoming sales										
Date	Sale	Lambs (\$/lb)		Lambs (\$/lb)		Lambs (\$/lb)		Sheep(\$/lb): Bred ewes \$/hd		Head
		Weight (lbs)	low - high	Weight (lbs)	low - high	Weight (lbs)	low - high		low - high	
No sale this week	Beaver Hill www.beaverhillauctions.com	0-54: wool	- - -	70-85: wool	- - -	86-105:wool	- - -	Ewes: wool	- - -	-
		0-54: hair	- - -			86-105:hair	- - -	Ewes: hair	- - -	
		55-69: wool	- - -	70-85: hair	- - -	106+:wool	- - -	Rams: wool	- - -	
		55-69: hair	- - -			106+:hair	- - -	Rams: hair	- - -	
								Bred Ewes	- - -	
						Ewe&Lamb(s)	- - -			
No sale this week	VJV Westlock www.vjvauction.com	0-69: wool	- - -	70-85: wool	- - -	86-105: wool	- - -	Ewes: wool	- - -	-
						86-105: hair	- - -	Ewes: hair	- - -	
		0-69: hair	- - -	70-85: hair	- - -	106+: wool	- - -	Rams: wool	- - -	
						106+: hair	- - -	Rams: hair	- - -	
								Bred Ewes:wool	- - -	
								Ewe&Lamb:hair	- - -	
9-Jun-20	Olds Auction www.oldsauction.com	30-50	2.30 - 2.60	70-80	2.20 - 2.45	90-100	2.15 - 2.30	Ewes	1.00 - 1.69	191 (incl.goats)
		50-60	2.30 - 2.60	80-90	2.20 - 2.40	100-110	2.10 - 2.30	Rams	1.41 - 1.55	
		60-70	2.20 - 2.50			110+	2.10 - 2.30	Bred Ewes	- - -	
6-Jun-20	Picture Butte www.picturebutteauction.ca					Feeder	2.36 - 2.63	Slaughter Ewes	- - -	-
						Slaughter	2.18 - 2.26	Feeder Ewes	- - -	
								Ewe&lamb(s)	- - -	
								Bred ewes	- - -	
								Rams	- - -	
Ontario Live Animal Markets										
8-Jun-20	OSI www.ontariosheep.org	0-50	3.05 - 3.35	65-80	2.60 - 3.40	95-110	2.78 - 2.98	Sheep	1.00 - 1.65	929
		50-64	2.90 - 3.43	80-95	2.43 - 2.98	110+	1.90 - 2.65			
9-Jun-20	OLEX www.ontariosheep.org	0-50	3.17 - 4.28	65-79	2.88 - 3.23	95-109	2.60 - 3.00	Sheep	1.10 - 1.50	1604
		50-64	3.03 - 3.43	80-94	2.83 - 3.13	110+	2.70 - 2.78			
8-Jun-20	Embrun www.ontariosheep.org	0-50	2.25 - 3.20	65-79	2.70 - 2.92	95-109	2.70 - 2.74	Sheep	1.27 - 1.50	292
		50-64	2.55 - 3.05	80-94	2.72 - 2.85	110+	2.50 - 3.00			
4-Jun-20	Brussels www.ontariosheep.org	0-50	2.90 - 2.97	65-79	2.65 - 2.91	95-109	2.51 - 2.68	Sheep	0.99 - 1.55	641
		50-64	2.80 - 3.08	80-94	2.45 - 2.73	110+	2.56 - 2.64			
Alberta Lamb Producers does not endorse individual markets or verify prices provided.										

Trends* in auction price for heavy lambs in Alberta



*Due to differences among auctions, prices are reported as 'trends' rather than averages.
This graph is updated on weeks with two or more markets reporting prices.