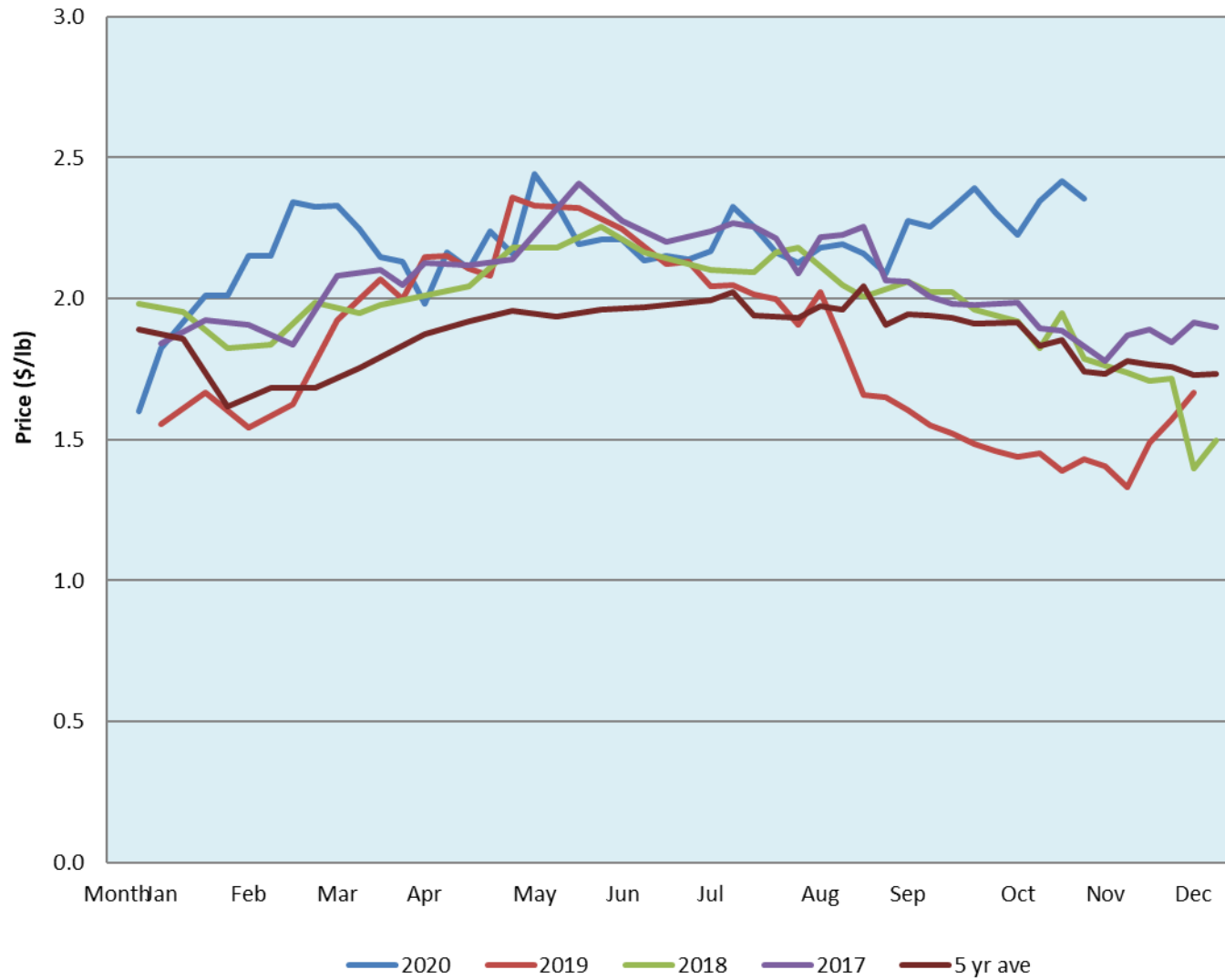


Alberta Live Animal Markets: Visit individual market websites for more information about applicable auction fees and upcoming sales										
Date	Sale	Lambs (\$/lb)		Lambs (\$/lb)		Lambs (\$/lb)		Sheep(\$/lb): Bred ewes \$/hd		Head
		Weight (lbs)	low - high	Weight (lbs)	low - high	Weight (lbs)	low - high		low - high	
9-Nov-20	Beaver Hill www.beaverhillauctions.com	0-54: wool	2.60 - 2.90	70-85: wool	2.64 - 2.85	86-105:wool	2.53 - 2.72	Ewes: wool	1.55 - 1.90	693
		0-54: hair	2.30 - 2.60			86-105:hair	2.42 - 2.65	Ewes: hair	1.70 - 2.70	
		55-69: wool	2.70 - 2.99	70-85: hair	2.50 - 2.75	106+:wool	2.40 - 2.62	Rams: wool	1.42 - 1.72	
		55-69: hair	2.54 - 2.80			106+:hair	2.35 - 2.55	Rams: hair	1.51 - 1.75	
								Bred Ewes	3 - 3	
						Ewe&Lamb(s)	- - -			
No sale this week	VJV Westlock www.vjvauction.com	0-69: wool	- - -	70-85: wool	- - -	86-105: wool	- - -	Ewes: wool	- - -	-
						86-105: hair	- - -	Ewes: hair	- - -	
		0-69: hair	- - -	70-85: hair	- - -	106+: wool	- - -	Rams: wool	- - -	
						106+: hair	- - -	Rams: hair	- - -	
								Bred Ewes:wool	- - -	
						Ewe&Lamb:hair	- - -			
10-Nov-20	Olds Auction www.oldsauction.com	30-50	1.00 - 2.11	70-80	2.57 - 2.64	90-100	2.31 - 2.47	Ewes	1.18 - 1.65	88 (incl.goats)
		50-60	1.60 - 2.22	80-90	2.47 - 2.57	100-110	2.18 - 2.45	Rams	1.00 - 1.71	
		60-70	1.91 - 2.60			110+	2.41 - 2.45	Bred Ewes	2 - 3	
7-Nov-20	Picture Butte www.picturebutteauction.ca					Feeder	2.00 - 2.36	Slaughter Ewes	- - -	-
						Slaughter	2.18 - 2.29	Feeder Ewes	- - -	
								Ewe&lamb(s)	- - -	
								Bred ewes	- - -	
								Rams	- - -	
Ontario Live Animal Markets										
Unavailable	OSI www.ontariosheep.org	0-50	0.00 - 0.00	65-80	0.00 - 0.00	95-110	0.00 - 0.00	Sheep	0.00 - 0.00	0
		50-64	0.00 - 0.00	80-95	0.00 - 0.00	110+	0.00 - 0.00			
10-Nov-20	OLEX www.ontariosheep.org	0-50	3.05 - 3.75	65-79	2.95 - 3.45	95-109	2.70 - 2.93	Sheep	1.98 - 2.65	1568
		50-64	3.33 - 3.63	80-94	2.75 - 3.20	110+	2.50 - 2.85			
9-Nov-20	Embrun www.ontariosheep.org	0-50	3.35 - 4.20	65-79	3.07 - 3.20	95-109	2.65 - 2.87	Sheep	1.85 - 2.37	355
		50-64	3.20 - 3.60	80-94	2.74 - 3.05	110+	2.62 - 3.05			
5-Nov-20	Brussels www.ontariosheep.org	0-50	3.00 - 3.00	65-79	2.90 - 3.10	95-109	2.74 - 2.88	Sheep	1.75 - 2.25	168
		50-64	3.35 - 3.55	80-94	2.77 - 2.88	110+	2.25 - 2.50			
Alberta Lamb Producers does not endorse individual markets or verify prices provided.										

Trends* in auction price for heavy lambs in Alberta



*Due to differences among auctions, prices are reported as 'trends' rather than averages.
This graph is updated on weeks with two or more markets reporting prices.