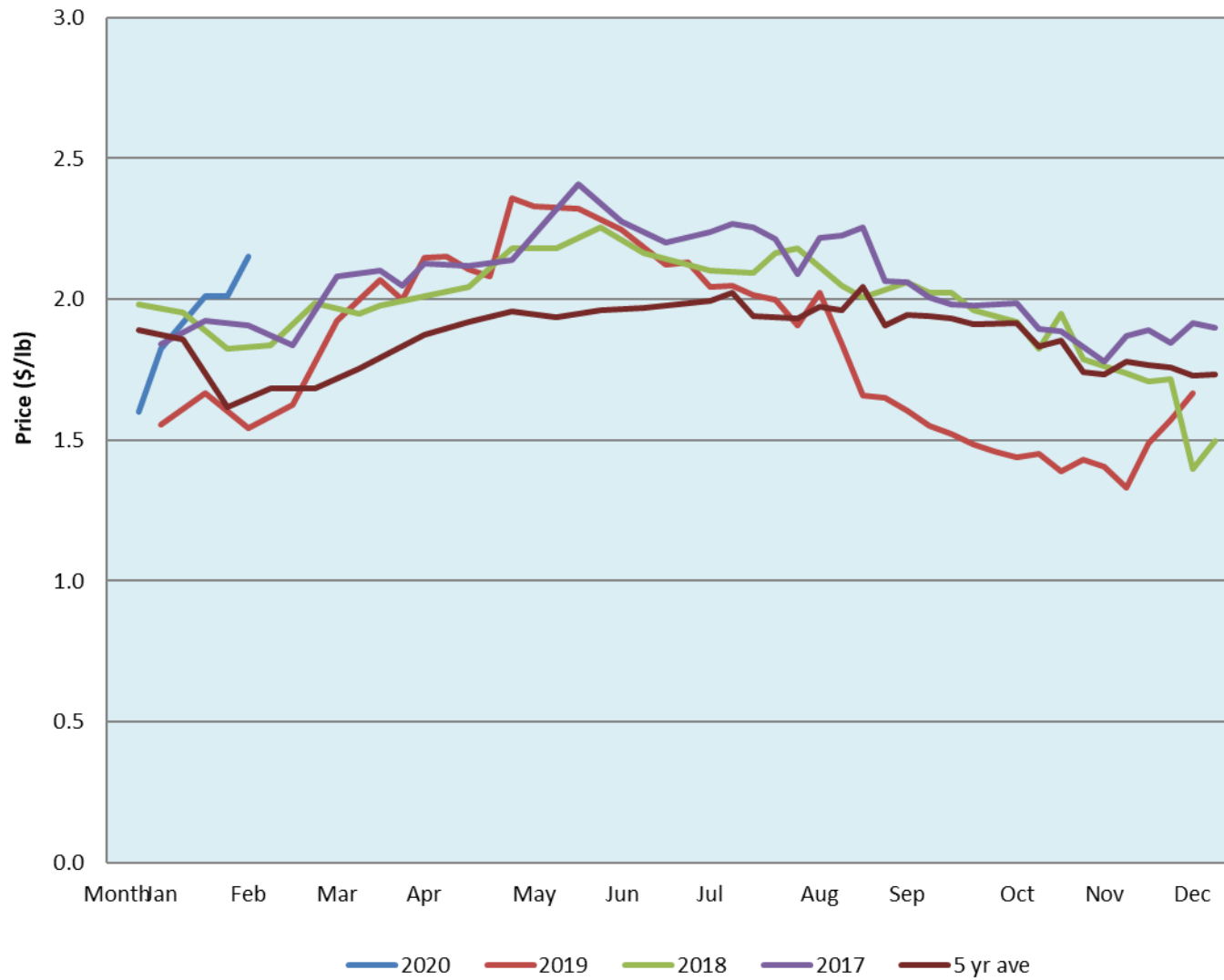


Alberta Live Animal Markets: Visit individual market websites for more information about applicable auction fees and upcoming sales										
Date	Sale	Lambs (\$/lb)		Lambs (\$/lb)		Lambs (\$/lb)		Sheep(\$/lb): Bred ewes \$/hd		Head
		Weight (lbs)	low - high	Weight (lbs)	low - high	Weight (lbs)	low - high		low - high	
10-Feb-20	Beaver Hill www.beaverhillauctions.com	0-54: wool	2.20 - 2.75	70-85: wool	2.45 - 2.83	86-105:wool	2.10 - 2.64	Ewes: wool	1.25 - 1.40	1064
		0-54: hair	2.00 - 2.50			86-105:hair	2.15 - 2.50	Ewes: hair	1.21 - 1.36	
		55-69: wool	2.52 - 2.90	70-85: hair	2.41 - 2.79	106+:wool	1.85 - 2.18	Rams: wool	1.11 - 1.76	
		55-69: hair	2.45 - 2.90			106+:hair	1.80 - 2.00	Rams: hair	1.25 - 1.44	
								Bred Ewes	2 - 3	
						Ewe&Lamb(s)	- - -			
No sale this week	VJV Westlock www.vjvauction.com	0-69: wool	- - -	70-85: wool	- - -	86-105: wool	- - -	Ewes: wool	- - -	-
						86-105: hair	- - -	Ewes: hair	- - -	
		0-69: hair	- - -	70-85: hair	- - -	106+: wool	- - -	Rams: wool	- - -	
						106+: hair	- - -	Rams: hair	- - -	
								Bred Ewes:wool	- - -	
						Ewe&Lamb:hair	- - -			
11-Feb-20	Olds Auction www.oldsauction.com	30-50	1.00 - 1.10	70-80	2.10 - 2.20	90-100	2.00 - 2.15	Ewes	1.30 - 1.40	96 (incl.goats)
		50-60	1.10 - 1.30	80-90	2.00 - 2.20	100-110	2.00 - 2.15	Rams	1.60 - 1.80	
		60-70	2.10 - 2.40			110+	- - -	Bred Ewes	- - -	
8-Feb-20	Picture Butte www.picturebutteauction.ca					Feeder	2.05 - 2.26	Slaughter Ewes	- - -	-
						Slaughter	1.94 - 2.12	Feeder Ewes	- - -	
								Ewe&lamb(s)	- - -	
								Bred ewes	- - -	
								Rams	- - -	
Ontario Live Animal Markets										
10-Feb-20	OSI www.ontariosheep.org	0-50	3.13 3.13	65-80	2.75 - 3.33	95-110	2.31 - 2.55	Sheep	1.68 - 2.21	631
		50-64	3.15 - 3.39	80-95	2.29 - 3.00	110+	1.95 - 2.48			
11-Feb-20	OLEX www.ontariosheep.org	0-50	4.00 - 4.25	65-79	3.03 - 3.35	95-109	2.36 - 2.68	Sheep	1.50 - 2.10	1073
		50-64	3.15 - 3.53	80-94	2.53 - 2.78	110+	2.32 - 2.50			
10-Feb-20	Embrun www.ontariosheep.org	0-50	0.00 - 0.00	65-79	3.10 - 3.47	95-109	3.05 - 3.38	Sheep	1.52 - 1.80	154
		50-64	3.22 - 3.44	80-94	3.28 - 3.60	110+	2.60 - 2.97			
6-Feb-20	Brussels www.ontariosheep.org	0-50	3.22 - 3.47	65-79	2.70 - 3.43	95-109	2.50 - 2.67	Sheep	1.33 - 2.09	236
		50-64	3.23 - 3.45	80-94	2.66 - 2.74	110+	1.95 - 2.47			
Alberta Lamb Producers does not endorse individual markets or verify prices provided.										

Trends* in auction price for heavy lambs in Alberta



*Due to differences among auctions, prices are reported as 'trends' rather than averages.
This graph is updated on weeks with two or more markets reporting prices.