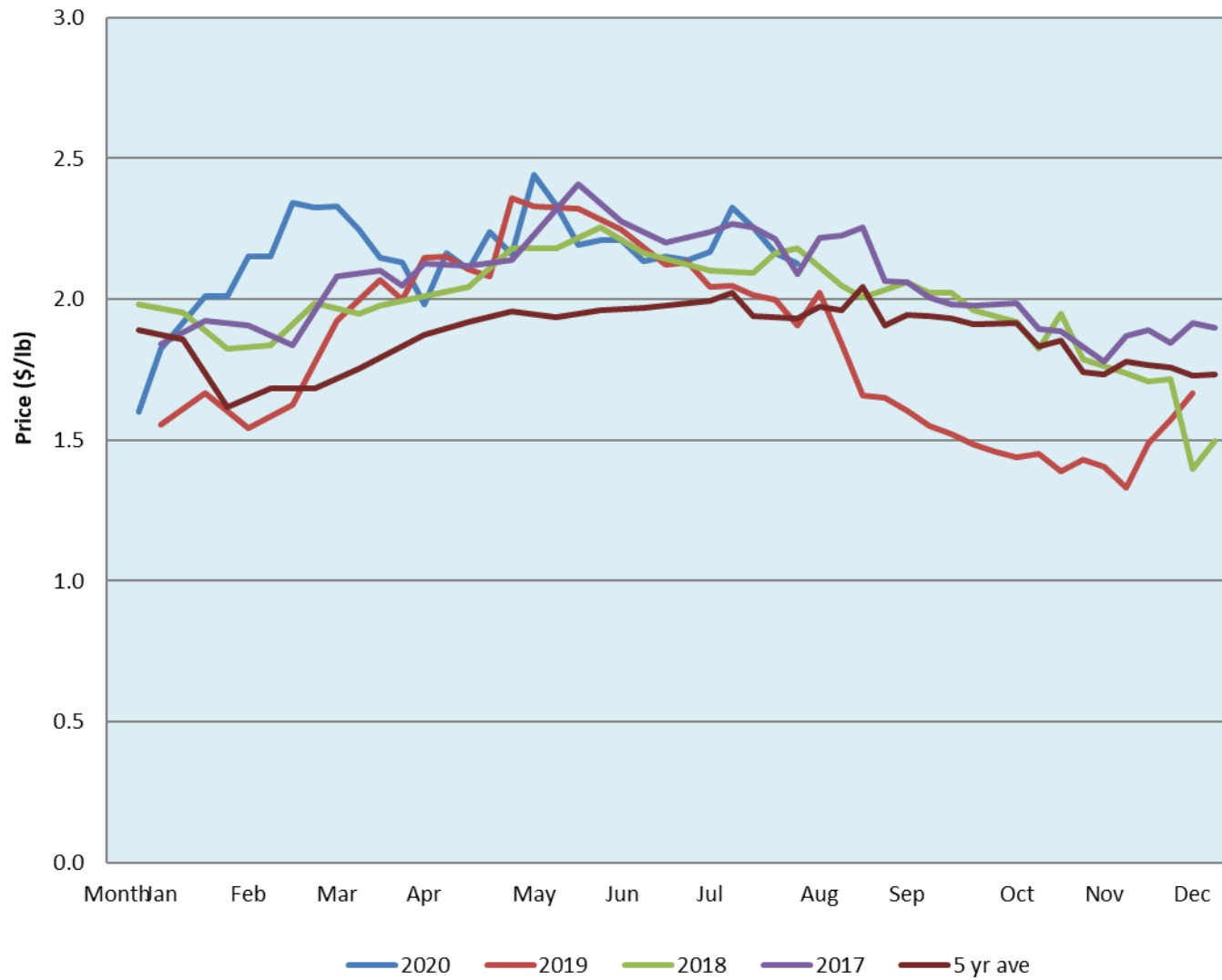


Alberta Live Animal Markets: Visit individual market websites for more information about applicable auction fees and upcoming sales										
Date	Sale	Lambs (\$/lb)		Lambs (\$/lb)		Lambs (\$/lb)		Sheep(\$/lb): Bred ewes \$/hd		Head
		Weight (lbs)	low - high	Weight (lbs)	low - high	Weight (lbs)	low - high		low - high	
10-Aug-20	Beaver Hill <a href="http://www.beaverhillauctions.com">www.beaverhillauctions.com</a>	0-54: wool	1.75 - 2.70	70-85: wool	2.10 - 2.40	86-105:wool	2.10 - 2.34	Ewes: wool	1.20 - 2.24	960
		0-54: hair	1.75 - 2.10			86-105:hair	2.05 - 2.20	Ewes: hair	1.20 - 1.93	
		55-69: wool	1.90 - 2.70	70-85: hair	2.00 - 2.34	106+:wool	2.10 - 2.28	Rams: wool	1.20 - 1.87	
		55-69: hair	1.84 - 2.20			106+:hair	2.00 - 2.15	Rams: hair	1.30 - 1.80	
								Bred Ewes	- - -	
						Ewe&Lamb(s)	- - -			
No sale this week	VJV Westlock <a href="http://www.vjvauction.com">www.vjvauction.com</a>	0-69: wool	- - -	70-85: wool	- - -	86-105: wool	- - -	Ewes: wool	- - -	-
						86-105: hair	- - -	Ewes: hair	- - -	
		0-69: hair	- - -	70-85: hair	- - -	106+: wool	- - -	Rams: wool	- - -	
						106+: hair	- - -	Rams: hair	- - -	
								Bred Ewes:wool	- - -	
						Ewe&Lamb:hair	- - -			
11-Aug-20	Olds Auction <a href="http://www.oldsauction.com">www.oldsauction.com</a>	30-50	2.50 - 2.60	70-80	2.15 - 2.42	90-100	2.20 - 2.34	Ewes	1.37 - 1.47	425 (incl.goats)
		50-60	2.50 - 2.62	80-90	2.15 - 2.28	100-110	2.00 - 2.07	Rams	1.70 - 1.82	
		60-70	1.90 - 2.49			110+	1.76 - 1.89	Bred Ewes	- - -	
8-Aug-20	Picture Butte <a href="http://www.picturebutteauction.ca">www.picturebutteauction.ca</a>					Feeder	2.20 - 2.32	Slaughter Ewes	- - -	-
						Slaughter	2.18 - 2.26	Feeder Ewes	- - -	
								Ewe&lamb(s)	- - -	
								Bred ewes	- - -	
								Rams	- - -	
Ontario Live Animal Markets										
10-Aug-20	OSI <a href="http://www.ontariosheep.org">www.ontariosheep.org</a>	0-50	2.75 - 2.83	65-80	2.90 - 3.18	95-110	2.60 - 2.85	Sheep	1.15 - 1.98	894
		50-64	2.58 - 3.68	80-95	2.73 - 2.94	110+	1.60 - 2.75			
11-Aug-20	OLEX <a href="http://www.ontariosheep.org">www.ontariosheep.org</a>	0-50	2.70 - 3.38	65-79	2.65 - 3.26	95-109	2.75 - 2.98	Sheep	1.73 - 2.10	1673
		50-64	2.80 - 3.68	80-94	2.85 - 3.13	110+	2.25 - 2.80			
10-Aug-20	Embrun <a href="http://www.ontariosheep.org">www.ontariosheep.org</a>	0-50	1.75 - 2.90	65-79	3.22 - 3.75	95-109	2.45 - 3.42	Sheep	1.45 - 2.05	403
		50-64	2.80 - 3.50	80-94	3.30 - 3.72	110+	1.70 - 3.25			
6-Aug-20	Brussels <a href="http://www.ontariosheep.org">www.ontariosheep.org</a>	0-50	2.92 - 2.92	65-79	2.95 - 3.22	95-109	2.00 - 2.92	Sheep	1.30 - 2.10	382
		50-64	2.75 - 3.19	80-94	2.85 - 2.97	110+	2.35 - 2.71			
Alberta Lamb Producers does not endorse individual markets or verify prices provided.										

## Trends\* in auction price for heavy lambs in Alberta



\*Due to differences among auctions, prices are reported as 'trends' rather than averages.  
 This graph is updated on weeks with two or more markets reporting prices.