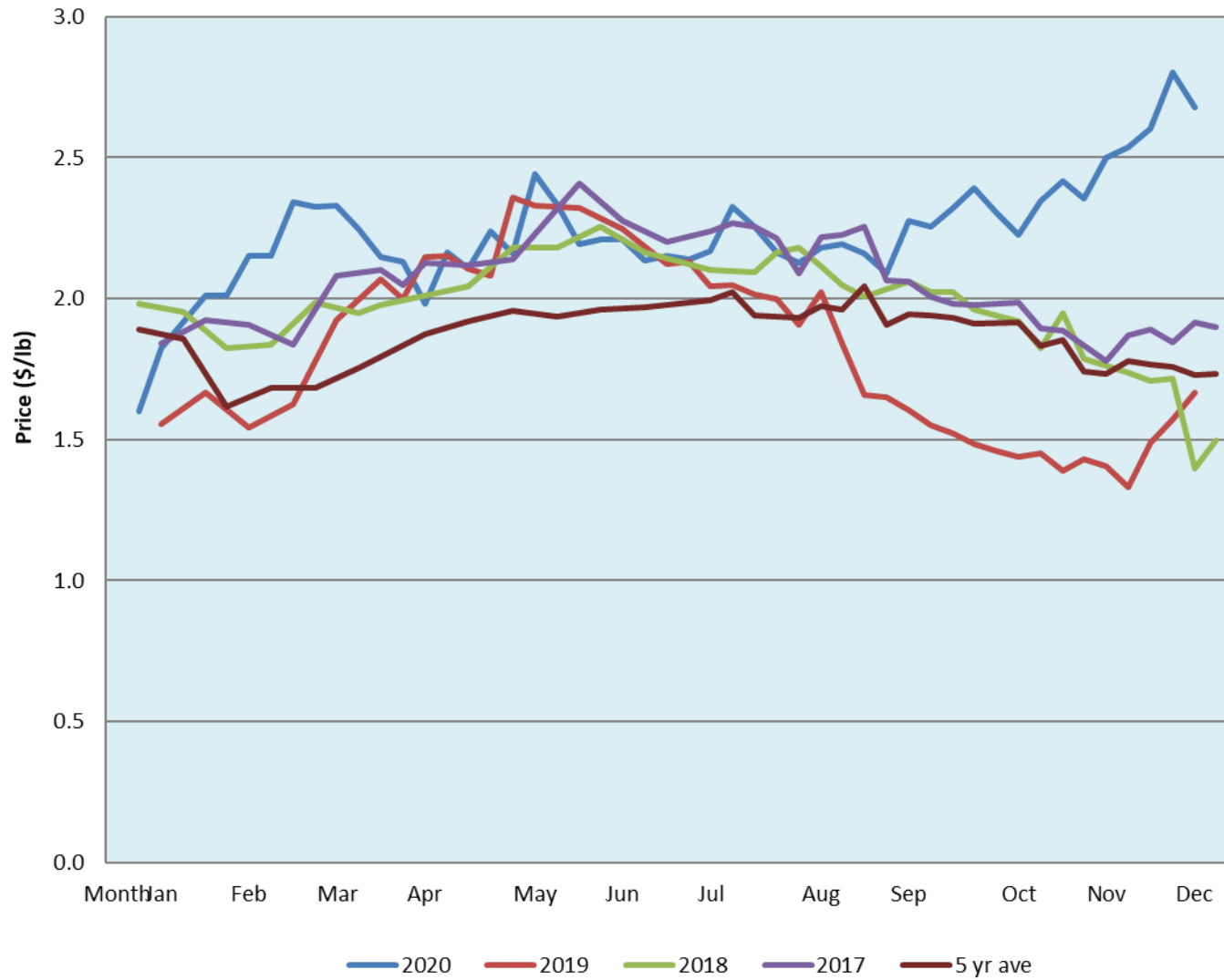


| Alberta Live Animal Markets: Visit individual market websites for more information about applicable auction fees and upcoming sales | | | | | | | | | | |
|---|---|---------------|-------------|---------------|-------------|----------------|-------------|-------------------------------|-------------|------|
| Date | Sale | Lambs (\$/lb) | | Lambs (\$/lb) | | Lambs (\$/lb) | | Sheep(\$/lb): Bred ewes \$/hd | | Head |
| | | Weight (lbs) | low - high | Weight (lbs) | low - high | Weight (lbs) | low - high | | low - high | |
| 14-Dec-20 | Beaver Hill www.beaverhillauctions.com | 0-54: wool | 3.00 - 4.00 | 70-85: wool | 3.10 - 3.50 | 86-105:wool | 2.70 - 3.15 | Ewes: wool | 1.60 - 2.40 | 999 |
| | | 0-54: hair | 2.70 - 3.75 | | | 86-105:hair | 2.60 - 3.06 | Ewes: hair | 1.60 - 3.16 | |
| | | 55-69: wool | 3.35 - 3.70 | 70-85: hair | 3.10 - 3.45 | 106+:wool | 2.60 - 2.95 | Rams: wool | 1.55 - 2.35 | |
| | | 55-69: hair | 3.15 - 3.50 | | | Bred Ewes | 2.90 - 3.65 | | | |
| | | | | | | 106+:hair | 2.55 - 2.65 | Ewe&Lamb(s) | - - - | |
| No sale this week | VJV Westlock www.vjvauction.com | 0-69: wool | - - - | 70-85: wool | - - - | 86-105: wool | - - - | Ewes: wool | - - - | - |
| | | | | | | 86-105: hair | - - - | Ewes: hair | - - - | |
| | | 0-69: hair | - - - | 70-85: hair | - - - | 106+: wool | - - - | Rams: wool | - - - | |
| | | | | | | Bred Ewes:wool | - - - | Rams: hair | - - - | |
| | | | | | | 106+: hair | - - - | Ewe&Lamb:hair | - - - | |
| information unavailable | Olds Auction www.oldsauction.com | 30-50 | - - - | 70-80 | - - - | 90-100 | - - - | Ewes | - - - | - |
| | | 50-60 | - - - | 80-90 | - - - | 100-110 | - - - | Rams | - - - | |
| | | 60-70 | - - - | | | 110+ | - - - | Bred Ewes | - - - | |
| 12-Dec-20 | Picture Butte www.picturebutteauction.ca | | | | | Feeder | 2.73 - 3.05 | Slaughter Ewes | 1.40 - 1.52 | - |
| | | | | | | Slaughter | 2.50 - 2.66 | Feeder Ewes | - - - | |
| | | | | | | | | Ewe&lamb(s) | - - - | |
| | | | | | | | | Bred ewes | - - - | |
| | | | | | | | | Rams | 1.25 - 1.45 | |
| Ontario Live Animal Markets | | | | | | | | | | |
| 14-Dec-20 | OSI www.ontariosheep.org | 0-50 | 2.00 - 4.05 | 65-80 | 3.05 - 3.78 | 95-110 | 2.71 - 2.85 | Sheep | 1.95 - 3.25 | 1262 |
| | | 50-64 | 2.20 - 3.90 | 80-95 | 2.83 - 3.15 | 110+ | 2.25 - 2.60 | | | |
| 15-Dec-20 | OLEX www.ontariosheep.org | 0-50 | 4.25 - 5.17 | 65-79 | 3.43 - 4.28 | 95-109 | 2.80 - 2.98 | Sheep | 1.90 - 3.50 | 2967 |
| | | 50-64 | 3.98 - 4.55 | 80-94 | 2.95 - 3.38 | 110+ | 2.80 - 2.89 | | | |
| 14-Dec-20 | Embrun www.ontariosheep.org | 0-50 | 4.15 - 4.45 | 65-79 | 3.35 - 3.57 | 95-109 | 2.45 - 2.87 | Sheep | 2.20 - 2.67 | 515 |
| | | 50-64 | 3.35 - 3.85 | 80-94 | 2.90 - 3.34 | 110+ | 2.60 - 2.85 | | | |
| 10-Dec-20 | Brussels www.ontariosheep.org | 0-50 | 2.75 - 4.30 | 65-79 | 2.91 - 3.75 | 95-109 | 2.61 - 2.85 | Sheep | 1.72 - 2.63 | 583 |
| | | 50-64 | 3.65 - 4.33 | 80-94 | 2.75 - 3.12 | 110+ | 2.53 - 2.65 | | | |
| Alberta Lamb Producers does not endorse individual markets or verify prices provided. | | | | | | | | | | |

Trends* in auction price for heavy lambs in Alberta



*Due to differences among auctions, prices are reported as 'trends' rather than averages.
This graph is updated on weeks with two or more markets reporting prices.