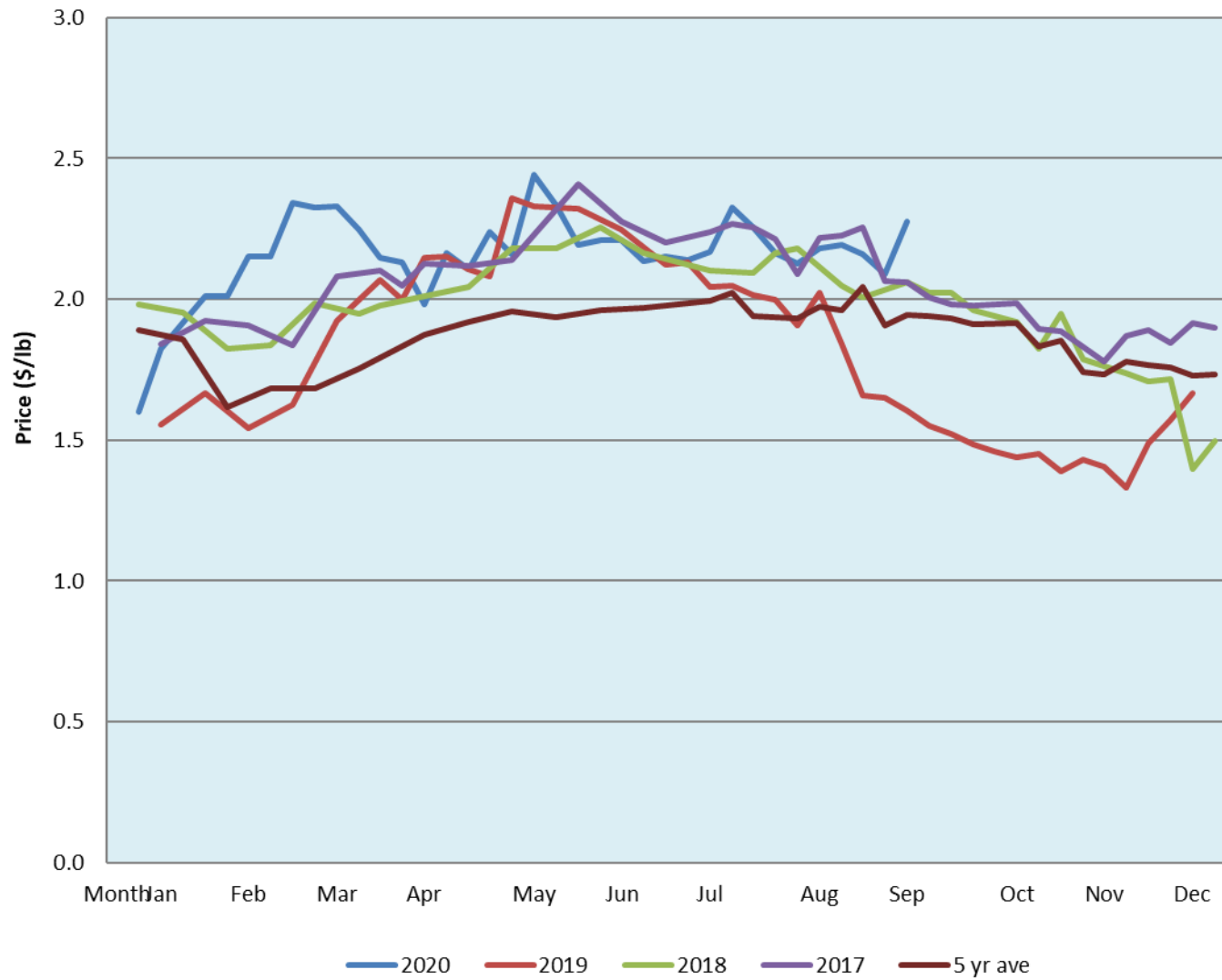


| Alberta Live Animal Markets: Visit individual market websites for more information about applicable auction fees and upcoming sales |   |               |             |               |             |               |             |                               |             |                     |
|---|---|---------------|-------------|---------------|-------------|---------------|-------------|-------------------------------|-------------|---------------------|
| Date  | Sale  | Lambs (\$/lb) |             | Lambs (\$/lb) |             | Lambs (\$/lb) |             | Sheep(\$/lb): Bred ewes \$/hd |             | Head                |
|   |   | Weight (lbs)  | low - high  | Weight (lbs)  | low - high  | Weight (lbs)  | low - high  |                               | low - high  |                     |
| 14-Sep-20   | Beaver Hill<br><a href="http://www.beaverhillauctions.com">www.beaverhillauctions.com</a>   | 0-54: wool    | 2.00 - 2.30 | 70-85: wool   | 2.15 - 2.37 | 86-105:wool   | 2.15 - 2.43 | Ewes: wool                    | 1.45 - 1.92 | 1426                |
|   |   | 0-54: hair    | 1.60 - 2.15 |               |             | 86-105:hair   | 2.00 - 2.28 | Ewes: hair                    | 1.47 - 2.15 |                     |
|   |   | 55-69: wool   | 2.07 - 2.41 | 70-85: hair   | 2.00 - 2.33 | 106+:wool     | 2.25 - 2.46 | Rams: wool                    | 1.47 - 2.12 |                     |
|   |   | 55-69: hair   | 1.80 - 2.32 |               |             | 106+:hair     | 2.17 - 2.30 | Rams: hair                    | 1.51 - 2.21 |                     |
|   |   |               |             |               |             |               |             | Bred Ewes                     | 2 - 3       |                     |
|   |   |               |             |               |             | Ewe&Lamb(s)   | - - -       |                               |             |                     |
| 15-Sep-20   | VJV Westlock<br><a href="http://www.vjvauction.com">www.vjvauction.com</a>                  | 0-69: wool    | 1.80 - 2.60 | 70-85: wool   | 1.80 - 2.30 | 86-105: wool  | 1.80 - 2.10 | Ewes: wool                    | 1.35 - 1.77 | 512                 |
|   |   |               |             |               |             | 86-105: hair  | - - -       | Ewes: hair                    | 1.70 - 1.85 |                     |
|   |   | 0-69: hair    | 1.70 - 1.87 | 70-85: hair   | 1.50 - 2.00 | 106+: wool    | 1.90 - 2.05 | Rams: wool                    | 1.10 - 1.40 |                     |
|   |   |               |             |               |             | 106+: hair    | - - -       | Rams: hair                    | - - -       |                     |
|   |   |               |             |               |             |               |             | Bred Ewes:wool                | - - -       |                     |
|   |   |               |             |               |             | Ewe&Lamb:hair | - - -       |                               |             |                     |
| 15-Sep-20   | Olds Auction<br><a href="http://www.oldsauktion.com">www.oldsauktion.com</a>                | 30-50         | 1.25 - 2.20 | 70-80         | 2.07 - 2.19 | 90-100        | 2.01 - 2.18 | Ewes                          | 1.14 - 1.72 | 223<br>(incl.goats) |
|   |   | 50-60         | 2.08 - 2.21 | 80-90         | 2.04 - 2.27 | 100-110       | 2.06 - 2.12 | Rams                          | 1.15 - 1.68 |                     |
|   |   | 60-70         | 2.04 - 2.17 |               |             | 110+          | 2.06 - 2.12 | Bred Ewes                     | - - -       |                     |
| 12-Sep-20   | Picture Butte<br><a href="http://www.picturebutteauction.ca">www.picturebutteauction.ca</a> |               |             |               |             | Feeder        | 2.58 - 2.40 | Slaughter Ewes                | 1.21 - 1.39 | -                   |
|   |   |               |             |               |             | Slaughter     | 2.38 - 2.38 | Feeder Ewes                   | 1.50 - 1.57 |                     |
|   |   |               |             |               |             |               |             | Ewe&lamb(s)                   | - - -       |                     |
|   |   |               |             |               |             |               |             | Bred ewes                     | - - -       |                     |
|   |   |               |             |               |             |               |             | Rams                          | - - -       |                     |
| Ontario Live Animal Markets   |   |               |             |               |             |               |             |                               |             |                     |
| 14-Sep-20   | OSI<br><a href="http://www.ontariosheep.org">www.ontariosheep.org</a>                       | 0-50          | 2.75 - 3.00 | 65-80         | 2.68 - 3.16 | 95-110        | 2.64 - 2.78 | Sheep                         | 1.95 - 2.33 | 1212                |
|   |   | 50-64         | 2.68 - 3.25 | 80-95         | 2.65 - 2.95 | 110+          | 2.25 - 2.69 |                               |             |                     |
| 15-Sep-20   | OLEX<br><a href="http://www.ontariosheep.org">www.ontariosheep.org</a>                      | 0-50          | 2.50 - 3.30 | 65-79         | 2.60 - 2.95 | 95-109        | 2.58 - 2.90 | Sheep                         | 2.00 - 2.33 | 2336                |
|   |   | 50-64         | 2.27 - 2.88 | 80-94         | 2.55 - 2.80 | 110+          | 2.62 - 2.91 |                               |             |                     |
| 14-Sep-20   | Embrun<br><a href="http://www.ontariosheep.org">www.ontariosheep.org</a>                    | 0-50          | 2.10 - 3.00 | 65-79         | 2.56 - 2.84 | 95-109        | 2.47 - 2.64 | Sheep                         | 2.10 - 2.22 | 437                 |
|   |   | 50-64         | 2.55 - 2.78 | 80-94         | 2.48 - 2.64 | 110+          | 2.25 - 2.56 |                               |             |                     |
| 10-Sep-20   | Brussels<br><a href="http://www.ontariosheep.org">www.ontariosheep.org</a>                  | 0-50          | 2.63 - 3.00 | 65-79         | 2.74 - 2.88 | 95-109        | 2.75 - 2.77 | Sheep                         | 2.15 - 2.35 | 480                 |
|   |   | 50-64         | 2.82 - 3.00 | 80-94         | 2.60 - 2.93 | 110+          | 2.59 - 2.79 |                               |             |                     |
| Alberta Lamb Producers does not endorse individual markets or verify prices provided.   |   |               |             |               |             |               |             |                               |             |                     |

## Trends\* in auction price for heavy lambs in Alberta



\*Due to differences among auctions, prices are reported as 'trends' rather than averages.  
 This graph is updated on weeks with two or more markets reporting prices.