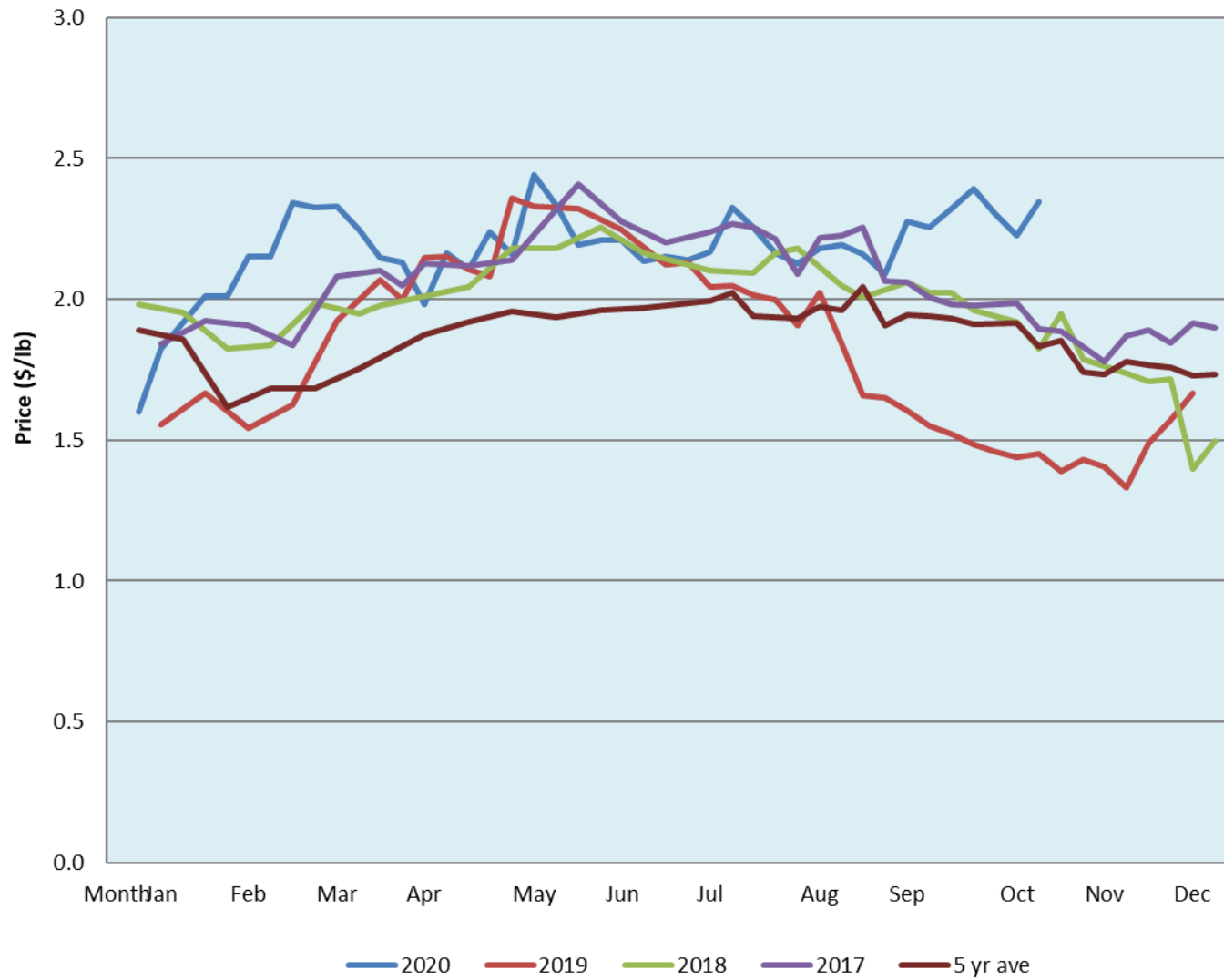


Alberta Live Animal Markets: Visit individual market websites for more information about applicable auction fees and upcoming sales										
Date	Sale	Lambs (\$/lb)		Lambs (\$/lb)		Lambs (\$/lb)		Sheep(\$/lb): Bred ewes \$/hd		Head
		Weight (lbs)	low - high	Weight (lbs)	low - high	Weight (lbs)	low - high		low - high	
26-Oct-20	Beaver Hill www.beaverhillauctions.com	0-54: wool	2.40 - 2.85	70-85: wool	2.40 - 2.81	86-105:wool	2.40 - 2.65	Ewes: wool	1.25 - 2.35	1096
		0-54: hair	2.20 - 2.60			86-105:hair	2.40 - 2.55	Ewes: hair	1.30 - 2.50	
		55-69: wool	2.50 - 2.87	70-85: hair	2.40 - 2.75	106+:wool	2.36 - 2.65	Rams: wool	1.35 - 2.09	
		55-69: hair	2.40 - 2.70			106+:hair	2.30 - 2.51	Rams: hair	1.39 - 2.14	
								Bred Ewes	2 - 3	
						Ewe&Lamb(s)	- - -			
No sale this week	VJV Westlock www.vjvauction.com	0-69: wool	- - -	70-85: wool	- - -	86-105: wool	- - -	Ewes: wool	- - -	-
						86-105: hair	- - -	Ewes: hair	- - -	
		0-69: hair	- - -	70-85: hair	- - -	106+: wool	- - -	Rams: wool	- - -	
						106+: hair	- - -	Rams: hair	- - -	
								Bred Ewes:wool	- - -	
								Ewe&Lamb:hair	- - -	
27-Oct-20	Olds Auction www.oldsauktion.com	30-50	2.00 - 2.21	70-80	2.35 - 2.40	90-100	2.26 - 2.34	Ewes	1.32 - 1.57	276 <small>(incl.goats)</small>
		50-60	2.35 - 2.43	80-90	2.36 - 2.47	100-110	2.16 - 2.23	Rams	1.38 - 1.74	
		60-70	2.35 - 2.43			110+	2.13 - 2.18	Bred Ewes	- - -	
24-Oct-20	Picture Butte www.picturebutteauction.ca					Feeder	2.27 - 2.52	Slaughter Ewes	1.05 - 1.27	-
						Slaughter	2.27 - 2.42	Feeder Ewes	- - -	
								Ewe&lamb(s)	- - -	
								Bred ewes	- - -	
								Rams	- - -	
Ontario Live Animal Markets										
nation unava	OSI www.ontariosheep.org	0-50	0.00 - 0.00	65-80	0.00 - 0.00	95-110	0.00 - 0.00	Sheep	0.00 - 0.00	0
		50-64	0.00 - 0.00	80-95	0.00 - 0.00	110+	0.00 - 0.00			
27-Oct-20	OLEX www.ontariosheep.org	0-50	3.08 - 3.70	65-79	2.53 - 2.95	95-109	2.58 - 2.70	Sheep	0.00 - 0.00	1966
		50-64	2.85 - 3.40	80-94	2.55 - 2.70	110+	1.25 - 2.13			
26-Oct-20	Embrun www.ontariosheep.org	0-50	1.50 - 4.05	65-79	2.90 - 3.10	95-109	2.50 - 2.77	Sheep	1.58 - 2.12	429
		50-64	3.15 - 3.55	80-94	2.70 - 2.98	110+	2.24 - 2.50			
22-Oct-20	Brussels www.ontariosheep.org	0-50	3.00 - 3.15	65-79	3.05 - 3.31	95-109	2.68 - 2.91	Sheep	0.90 - 2.00	299
		50-64	3.25 - 3.55	80-94	2.89 - 3.26	110+	2.45 - 2.45			
Alberta Lamb Producers does not endorse individual markets or verify prices provided.										

Trends* in auction price for heavy lambs in Alberta



*Due to differences among auctions, prices are reported as 'trends' rather than averages.
This graph is updated on weeks with two or more markets reporting prices.