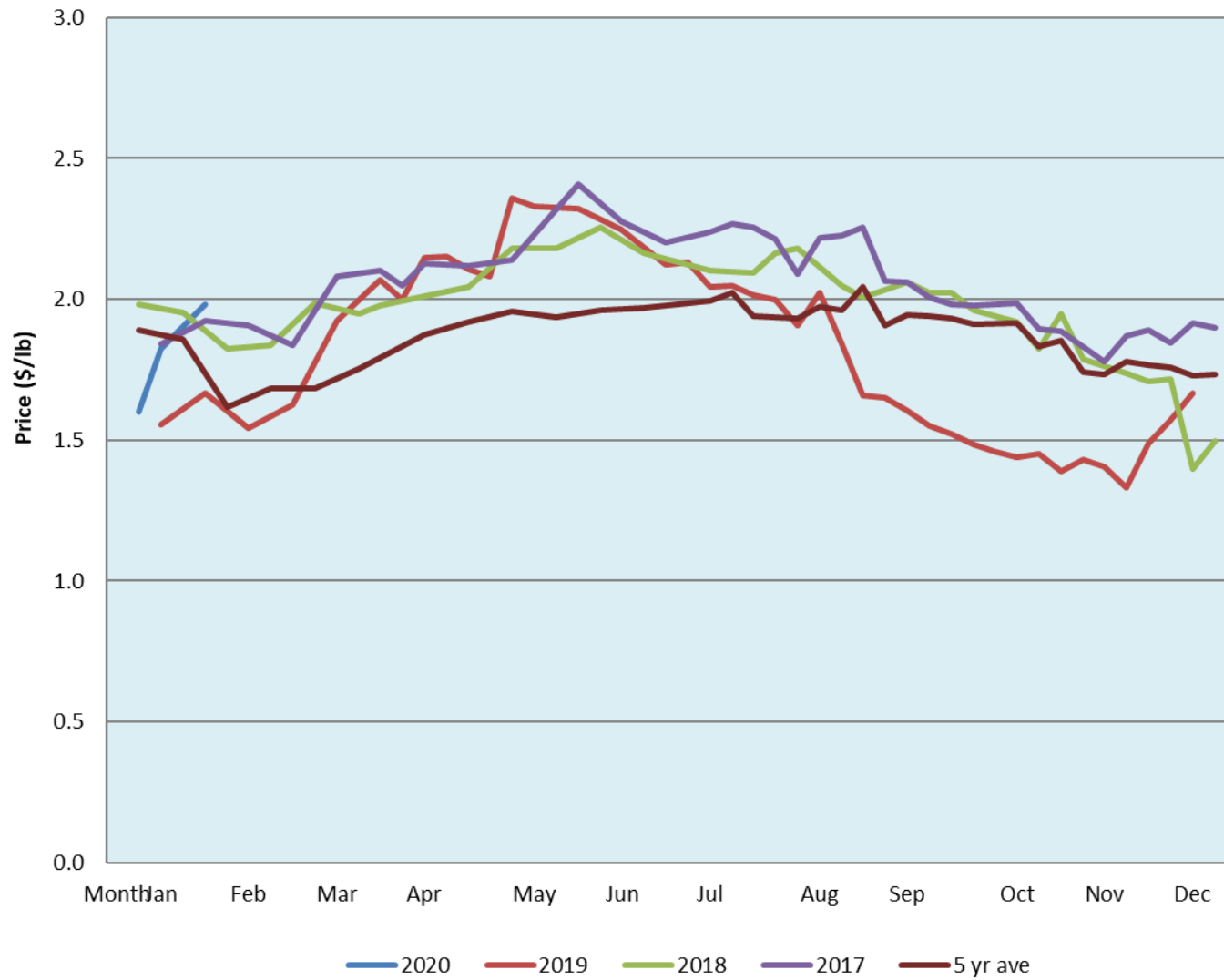


Alberta Live Animal Markets: Visit individual market websites for more information about applicable auction fees and upcoming sales										
Date	Sale	Lambs (\$/lb)		Lambs (\$/lb)		Lambs (\$/lb)		Sheep(\$/lb): Bred ewes \$/hd		Head
		Weight (lbs)	low - high	Weight (lbs)	low - high	Weight (lbs)	low - high		low - high	
27-Jan-20	Beaver Hill www.beaverhillauctions.com	0-54: wool	2.20 - 2.60	70-85: wool	2.26 - 2.60	86-105:wool	1.90 - 2.37	Ewes: wool	1.10 - 1.30	1002
		0-54: hair	1.60 - 2.25			86-105:hair	1.90 - 2.30	Ewes: hair	1.00 - 1.36	
		55-69: wool	2.40 - 2.72	70-85: hair	2.30 - 2.46	106+:wool	1.76 - 2.12	Rams: wool	1.08 - 1.36	
		55-69: hair	2.05 - 2.36			106+:hair	1.75 - 1.95	Rams: hair	1.20 - 1.40	
						Bred Ewes	2 - 2			
								Ewe&Lamb(s)	- - -	
No sale this week	VJV Westlock www.vjvauction.com	0-69: wool	- - -	70-85: wool	- - -	86-105: wool	- - -	Ewes: wool	- - -	-
						86-105: hair	- - -	Ewes: hair	- - -	
		0-69: hair	- - -	70-85: hair	- - -	106+: wool	- - -	Rams: wool	- - -	
						106+: hair	- - -	Rams: hair	- - -	
						Bred Ewes:wool	- - -			
						Ewe&Lamb:hair	- - -			
28-Jan-20	Olds Auction www.oldsauction.com	30-50	0.90 - 1.00	70-80	2.10 - 2.25	90-100	1.80 - 2.00	Ewes	0.85 - 1.30	233 (incl.goats)
		50-60	2.00 - 2.20	80-90	2.00 - 2.20	100-110	1.80 - 1.90	Rams	1.00 - 1.40	
		60-70	2.10 - 2.40			110+	- - -	Bred Ewes	- - -	
25-Jan-20	Picture Butte www.picturebutteauction.ca					Feeder	1.95 - 2.15	Slaughter Ewes	- - -	-
						Slaughter	1.88 - 1.92	Feeder Ewes	- - -	
								Ewe&lamb(s)	- - -	
								Bred ewes	- - -	
								Rams	- - -	
Ontario Live Animal Markets										
27-Jan-20	OSI www.ontariosheep.org	0-50	3.00 - 3.35	65-80	2.80 - 3.28	95-110	2.58 - 2.70	Sheep	1.43 - 1.80	673
		50-64	3.13 - 3.46	80-95	2.59 - 2.93	110+	1.95 - 2.60			
28-Jan-20	OLEX www.ontariosheep.org	0-50	3.48 - 3.73	65-79	3.18 - 3.40	95-109	2.90 - 3.14	Sheep	1.45 - 1.88	1237
		50-64	3.31 - 3.48	80-94	2.95 - 3.14	110+	2.58 - 2.90			
27-Jan-20	Embrun www.ontariosheep.org	0-50	3.00 - 3.65	65-79	2.75 - 3.00	95-109	2.48 - 2.82	Sheep	1.55 - 2.00	328
		50-64	2.85 - 3.22	80-94	2.60 - 2.87	110+	1.95 - 2.44			
23-Jan-20	Brussels www.ontariosheep.org	0-50	3.15 - 3.15	65-79	3.02 - 3.48	95-109	2.25 - 2.56	Sheep	1.35 - 1.87	349
		50-64	2.60 - 3.30	80-94	2.46 - 2.51	110+	1.87 - 2.46			
Alberta Lamb Producers does not endorse individual markets or verify prices provided.										

Trends* in auction price for heavy lambs in Alberta



*Due to differences among auctions, prices are reported as 'trends' rather than averages.
This graph is updated on weeks with two or more markets reporting prices.