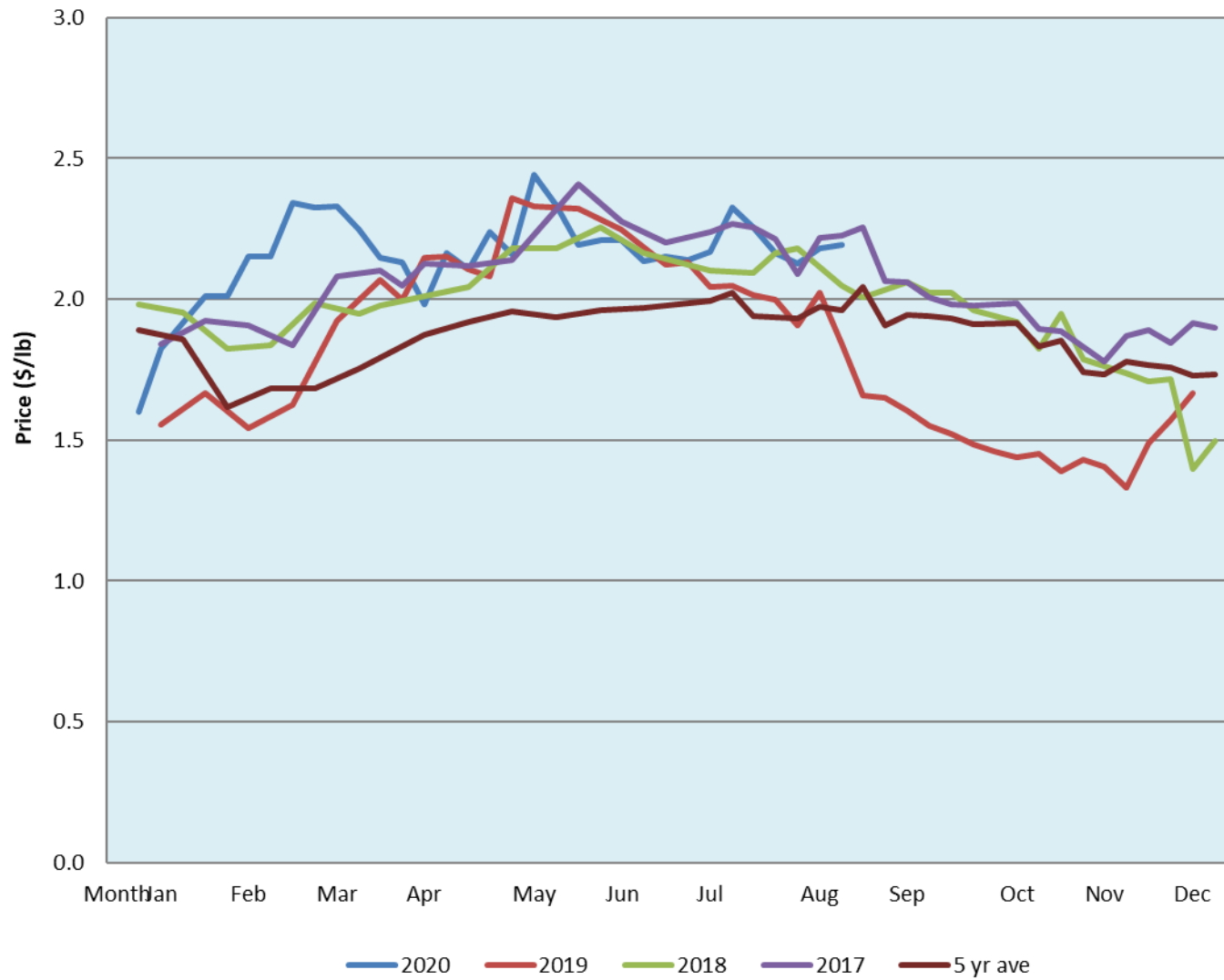


Alberta Live Animal Markets: Visit individual market websites for more information about applicable auction fees and upcoming sales										
Date	Sale	Lambs (\$/lb)		Lambs (\$/lb)		Lambs (\$/lb)		Sheep(\$/lb): Bred ewes \$/hd		Head
		Weight (lbs)	low - high	Weight (lbs)	low - high	Weight (lbs)	low - high		low - high	
24-Aug-20	Beaver Hill www.beaverhillauctions.com	0-54: wool	2.00 - 2.50	70-85: wool	2.12 - 2.55	86-105:wool	2.20 - 2.43	Ewes: wool	1.25 - 1.92	951
		0-54: hair	1.80 - 2.45			86-105:hair	2.20 - 2.41	Ewes: hair	1.20 - 1.96	
		55-69: wool	2.00 - 2.44	70-85: hair	2.15 - 2.64	106+:wool	2.20 - 2.36	Rams: wool	1.37 - 1.80	
		55-69: hair	1.80 - 2.27			106+:hair	2.10 - 2.30	Rams: hair	1.30 - 2.10	
								Bred Ewes	2 - 3	
						Ewe&Lamb(s)	- - -			
No sale this week	VJV Westlock www.vjvauction.com	0-69: wool	- - -	70-85: wool	- - -	86-105: wool	- - -	Ewes: wool	- - -	-
						86-105: hair	- - -	Ewes: hair	- - -	
		0-69: hair	- - -	70-85: hair	- - -	106+: wool	- - -	Rams: wool	- - -	
						106+: hair	- - -	Rams: hair	- - -	
								Bred Ewes:wool	- - -	
						Ewe&Lamb:hair	- - -			
25-Aug-20	Olds Auction www.oldsauction.com	30-50	2.50 - 2.80	70-80	2.21 - 2.48	90-100	2.18 - 2.28	Ewes	1.26 - 1.68	346 (incl.goats)
		50-60	2.39 - 2.54	80-90	2.24 - 2.41	100-110	1.27 - 2.31	Rams	1.21 - 1.91	
		60-70	2.34 - 2.55			110+	2.00 - 2.21	Bred Ewes	- - -	
Information unavailable	Picture Butte www.picturebutteauction.ca					Feeder	- - -	Slaughter Ewes	- - -	-
						Slaughter	- - -	Feeder Ewes	- - -	
								Ewe&lamb(s)	- - -	
								Bred ewes	- - -	
								Rams	- - -	
Ontario Live Animal Markets										
24-Aug-20	OSI www.ontariosheep.org	0-50	2.10 - 2.80	65-80	2.83 - 3.20	95-110	2.73 - 3.00	Sheep	1.80 - 2.15	1009
		50-64	2.70 - 3.25	80-95	2.68 - 2.94	110+	2.69 - 2.87			
25-Aug-20	OLEX www.ontariosheep.org	0-50	2.85 - 3.68	65-79	2.59 - 2.90	95-109	2.67 - 2.89	Sheep	1.88 - 2.28	2586
		50-64	2.65 - 3.25	80-94	2.65 - 2.90	110+	2.70 - 2.74			
24-Aug-20	Embrun www.ontariosheep.org	0-50	3.10 - 3.30	65-79	2.62 - 2.94	95-109	2.64 - 2.82	Sheep	1.70 - 1.97	490
		50-64	2.55 - 3.50	80-94	2.60 - 2.85	110+	2.40 - 2.70			
20-Aug-20	Brussels www.ontariosheep.org	0-50	2.55 - 3.05	65-79	2.63 - 3.00	95-109	2.70 - 2.85	Sheep	1.80 - 2.35	507
		50-64	2.45 - 2.90	80-94	2.70 - 2.88	110+	2.52 - 2.60			
Alberta Lamb Producers does not endorse individual markets or verify prices provided.										

Trends* in auction price for heavy lambs in Alberta



*Due to differences among auctions, prices are reported as 'trends' rather than averages.
This graph is updated on weeks with two or more markets reporting prices.