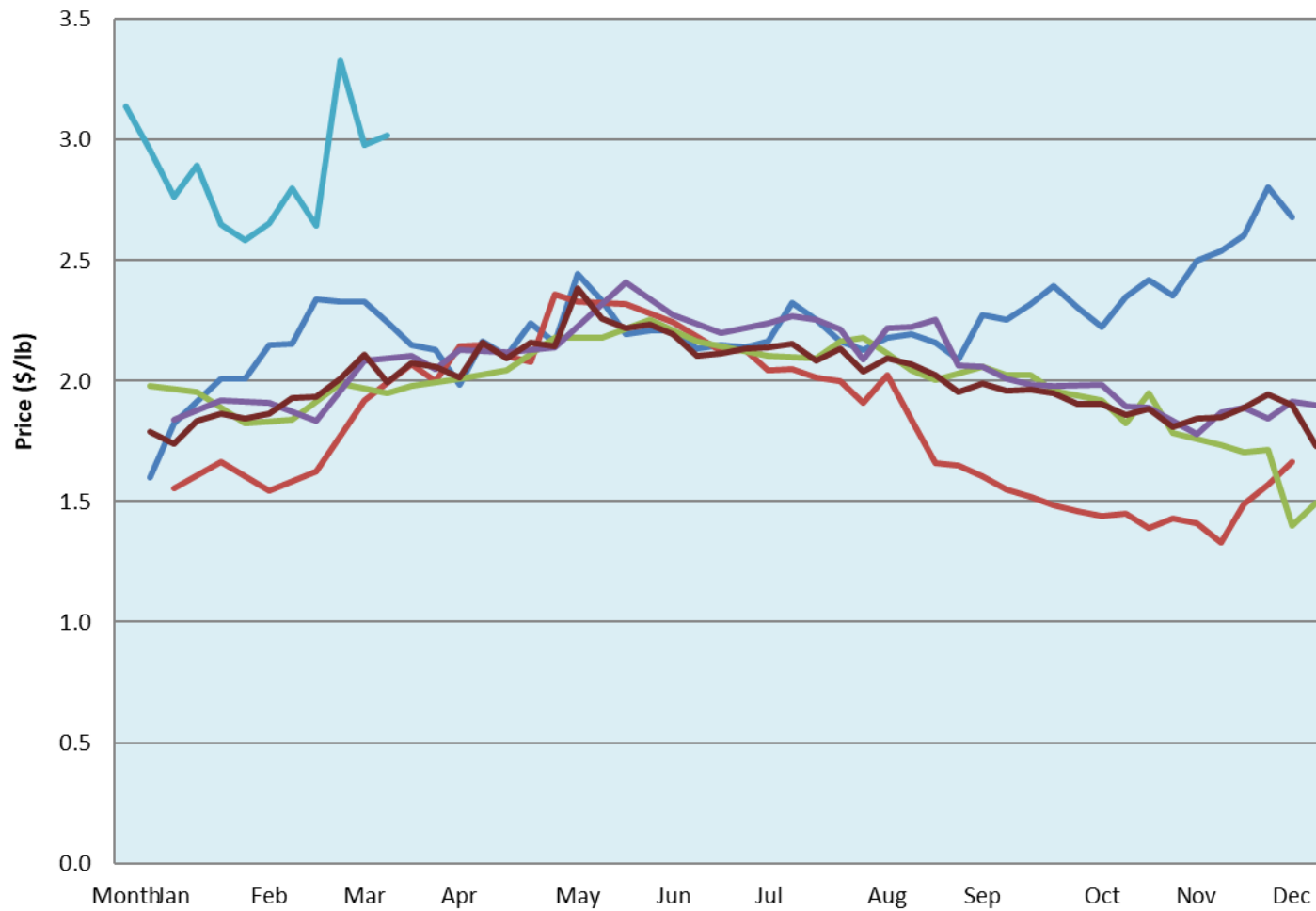


**Alberta Live Animal Markets: Visit individual market websites for more information about applicable auction fees and upcoming sales**

Date	Sale	Lambs (\$/lb)		Lambs (\$/lb)		Lambs (\$/lb)		Sheep(\$/lb): Bred ewes \$/hd		Head
		Weight (lbs)	low - high	Weight (lbs)	low - high	Weight (lbs)	low - high		low - high	
29-Mar-21	Beaver Hill <a href="http://www.beaverhillauctions.com">www.beaverhillauctions.com</a>	0-54: wool	4.00 - 4.50	70-85: wool	3.50 - 4.10	86-105:wool	2.85 - 3.50	Ewes: wool	1.37 - 2.25	411
		0-54: hair	3.60 - 4.35			86-105:hair	2.80 - 3.50	Ewes: hair	1.20 - 1.70	
		55-69: wool	3.50 - 4.30			106+:wool	2.50 - 2.85	Rams: wool	1.50 - 2.40	
		55-69: hair	3.50 - 4.00	70-85: hair	3.50 - 3.85	106+:hair	2.30 - 2.80	Rams: hair	1.50 - 2.60	
								Bred Ewes	3.10 - 5.00	
No sale this week	VJV Westlock <a href="http://www.vjvauction.com">www.vjvauction.com</a>	0-69: wool	- - -	70-85: wool	- - -	86-105: wool	- - -	Ewe&Lamb(s)	4 - 5	-
								Ewes: wool	- - -	
		0-69: hair	- - -	70-85: hair	- - -	86-105: hair	- - -	Ewes: hair	- - -	
						106+: wool	- - -	Rams: wool	- - -	
						106+: hair	- - -	Rams: hair	- - -	
30-Mar-21	Olds Auction <a href="http://www.oldsauction.com">www.oldsauction.com</a>	30-50	3.45 - 3.66	70-80	2.82 - 3.52	90-100	2.96 - 3.09	Ewes	1.59 - 1.71	160 <small>(incl.goats)</small>
		50-60	3.23 - 3.71	80-90	3.17 - 3.26	100-110	2.96 - 3.09	Rams	1.59 - 1.67	
		60-70	3.75 - 3.84			110+	2.88 - 3.10	Bred Ewes	- - -	
27-Mar-21	Picture Butte <a href="http://www.picturebutteauction.ca">www.picturebutteauction.ca</a>					Feeder	3.24 - 3.93	Slaughter Ewes	1.60 - 1.88	-
						Slaughter	3.10 - 3.60	Feeder Ewes	- - -	
								Ewe&lamb(s)	- - -	
								Bred ewes	- - -	
								Rams	- - -	
<b>Ontario Live Animal Markets</b>										
29-Mar-21	OSI <a href="http://www.ontariosheep.org">www.ontariosheep.org</a>	0-50	4.10 - 5.45	65-80	4.20 - 4.75	95-110	3.50 - 3.75	Sheep	1.60 - 2.60	790
		50-64	4.48 - 5.10	80-95	3.80 - 4.20	110+	3.00 - 3.46			
30-Mar-21	OLEX <a href="http://www.ontariosheep.org">www.ontariosheep.org</a>	0-50	4.68 - 5.90	65-79	3.93 - 4.58	95-109	3.55 - 3.69	Sheep	1.25 - 3.65	3205
		50-64	4.50 - 5.08	80-94	3.65 - 4.03	110+	3.10 - 3.73			
29-Mar-21	Embrun <a href="http://www.ontariosheep.org">www.ontariosheep.org</a>	0-50	5.60 - 5.60	65-79	4.10 - 4.50	95-109	3.60 - 4.15	Sheep	1.20 - 1.90	462
		50-64	4.30 - 5.10	80-94	4.10 - 4.42	110+	2.70 - 3.67			
25-Mar-21	Brussels <a href="http://www.ontariosheep.org">www.ontariosheep.org</a>	0-50	5.10 - 5.50	65-79	3.77 - 4.50	95-109	3.06 - 3.54	Sheep	1.00 - 2.05	648
		50-64	4.76 - 5.20	80-94	3.35 - 3.78	110+	2.77 - 2.90			
<b>Alberta Lamb Producers does not endorse individual markets or verify prices provided.</b>										

### Trends\* in auction price for heavy lambs in Alberta



— 2020 — 2019 — 2018 — 2017 — 5 yr ave — 2021

\*Due to differences among auctions, prices are reported as 'trends' rather than averages.  
This graph is updated on weeks with two or more markets reporting prices.