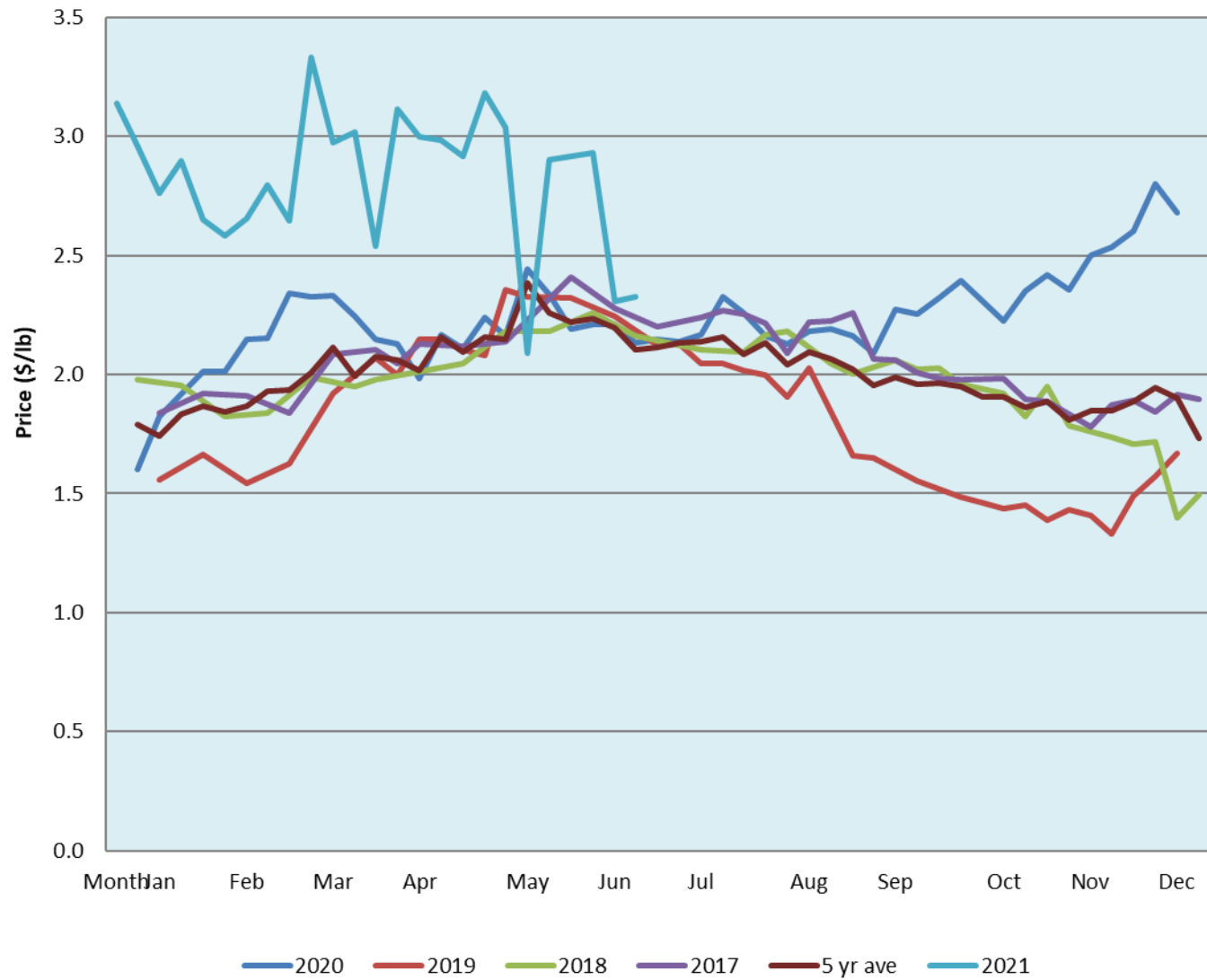


Alberta Live Animal Markets: Visit individual market websites for more information about applicable auction fees and upcoming sales										
Date	Sale	Lambs (\$/lb)		Lambs (\$/lb)		Lambs (\$/lb)		Sheep(\$/lb): Bred ewes \$/hd		Head
		Weight (lbs)	low - high	Weight (lbs)	low - high	Weight (lbs)	low - high		low - high	
28-Jun-21	Beaver Hill www.beaverhillauctions.com	0-54: wool	2.60 - 2.95	70-85: wool	2.30 - 2.71	86-105:wool	2.35 - 2.61	Ewes: wool	1.30 - 2.10	558
		0-54: hair	2.30 - 2.60			86-105:hair	2.20 - 2.45	Ewes: hair	1.30 - 2.00	
		55-69: wool	2.50 - 2.85	70-85: hair	2.34 - 2.60	106+:wool	2.25 - 2.51	Rams: wool	1.50 - 2.05	
		55-69: hair	2.30 - 2.60			106+:hair	2.15 - 2.25	Rams: hair	1.70 - 2.30	
								Bred Ewes	3.70 - 5.30	
						Ewe&Lamb(s)	4 - 5			
No sale this week	VJV Westlock www.vjvauction.com	0-69: wool	- - -	70-85: wool	- - -	86-105: wool	- - -	Ewes: wool	- - -	-
						86-105: hair	- - -	Ewes: hair	- - -	
		0-69: hair	- - -	70-85: hair	- - -	106+: wool	- - -	Rams: wool	- - -	
						106+: hair	- - -	Rams: hair	- - -	
								Bred Ewes:wool	- - -	
								Ewe&Lamb:hair	- - -	
29-Jun-21	Olds Auction www.oldsauction.com	30-50	2.45 - 2.57	70-80	2.38 - 2.61	90-100	2.30 - 2.41	Ewes	1.33 - 1.62	90 (incl.goats)
		50-60	2.43 - 2.63	80-90	2.45 - 2.58	100-110	2.15 - 2.41	Rams	1.46 - 1.54	
		60-70	2.42 - 2.88			110+	2.13 - 2.41	Bred Ewes	- - -	
Information unavailable	Picture Butte www.picturebutteauction.ca					Feeder	- - -	Slaughter Ewes	- - -	-
						Slaughter	- - -	Feeder Ewes	- - -	
								Ewe&lamb(s)	- - -	
								Bred ewes	- - -	
								Rams	- - -	
Ontario Live Animal Markets										
28-Jun-21	OSI www.ontariosheep.org	0-50	2.75 - 3.03	65-80	2.70 - 3.00	95-110	2.75 - 2.85	Sheep	1.45 - 2.10	1048
		50-64	2.90 - 3.30	80-95	2.80 - 2.95	110+	1.65 - 2.70			
29-Jun-21	OLEX www.ontariosheep.org	0-50	3.80 - 4.53	65-79	2.93 - 3.35	95-109	2.70 - 2.98	Sheep	1.35 - 2.05	2834
		50-64	3.35 - 3.80	80-94	2.78 - 3.18	110+	2.13 - 2.78			
28-Jun-21	Embrun www.ontariosheep.org	0-50	2.80 - 2.80	65-79	2.80 - 3.04	95-109	2.65 - 3.00	Sheep	1.60 - 2.00	467
		50-64	2.70 - 3.04	80-94	2.69 - 2.98	110+	2.65 - 3.05			
24-Jun-21	Brussels www.ontariosheep.org	0-50	2.90 - 3.50	65-79	2.98 - 3.40	95-109	2.59 - 2.79	Sheep	1.10 - 2.30	713
		50-64	3.30 - 3.69	80-94	2.75 - 2.97	110+	2.15 - 2.66			
Alberta Lamb Producers does not endorse individual markets or verify prices provided.										

Trends* in auction price for heavy lambs in Alberta



*Due to differences among auctions, prices are reported as 'trends' rather than averages.
 This graph is updated on weeks with two or more markets reporting prices.