

Alberta Live Animal Markets: Visit individual market websites for more information about applicable auction fees and upcoming sales.

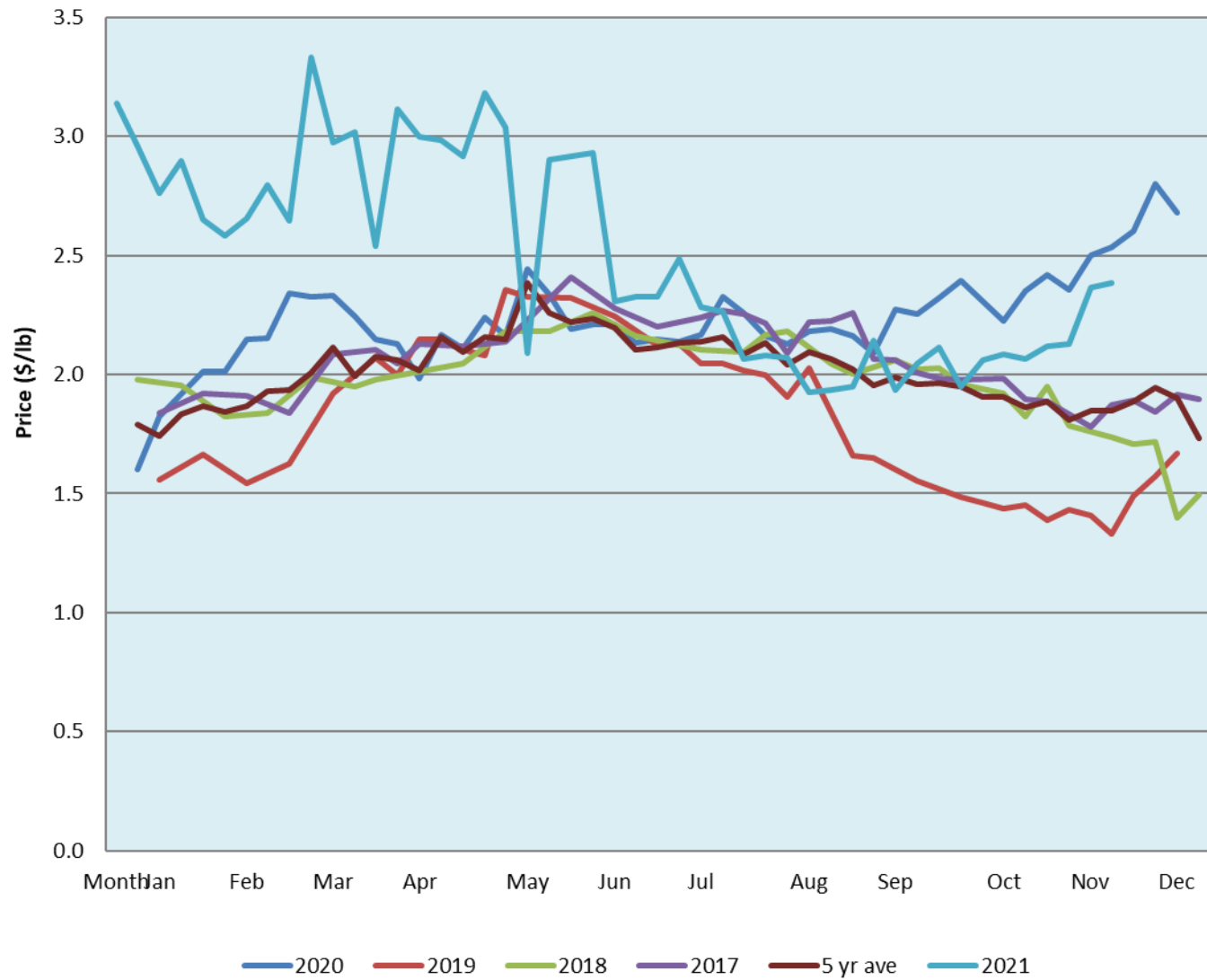
Date	Sale	Lambs (\$/lb)			Lambs (\$/lb)			Lambs (\$/lb)			Sheep(\$/lb): Bred ewes \$/hd		Total Head	
		Weight (lbs)	Head	low - high	Weight (lbs)	Head	low - high	Weight (lbs)	Head	low - high	low - high			
29-Nov-21	Beaver Hill www.beaverhillauctions.com	0-54: wool	-	3.10 - 3.80	70-85: wool	-	2.73 - 3.40	86-105:wool	-	2.26 - 2.74	Ewes: wool	1.35 - 2.30	1056	
		0-54: hair	-	2.40 - 3.25				86-105:hair	-	2.35 - 2.72	Rams: wool	1.62 - 1.95		
		55-69: wool	-	3.20 - 3.75	70-85: hair	-	2.50 - 3.00	106+:wool	-	2.35 - 2.42	Rams: hair	1.15 - 2.30		
		55-69: hair	-	2.60 - 3.35				106+:hair	-	1.10 - 2.40	Bred Ewes	2.30 - 3.90		
			-						-		Ewe&Lamb(s)	- - -		
No sale this week	VJV Westlock www.vjvauction.com	0-69: wool	-	- - -	70-85: wool	-	- - -	86-105: wool	-	- - -	Ewes: wool	- - -	-	
			-			-		86-105: hair	-	- - -	Ewes: hair	- - -		
			-			-			106+: wool	-	- - -	Rams: wool		- - -
		0-69: hair	-	- - -	70-85: hair	-	- - -	106+: hair	-	- - -	Rams: hair	- - -		
			-			-				-	- - -	Bred Ewes:wool		- - -
information unavailable	Olds Auction www.oldsauktion.com	30-50	-	- - -	70-80	-	- - -	90-100	-	- - -	Ewes	- - -	-	
		50-60	-	- - -	80-90	-	- - -	100-110	-	- - -	Rams	- - -		
		60-70	-	- - -				110+	-	- - -	Bred Ewes	- - -		
Information unavailable	Picture Butte www.picturebutteauction.ca							Feeder	-	- - -	Slaughter Ewes	- - -	-	
								Slaughter	-	- - -	Feeder Ewes	- - -		
											Ewe&lamb(s)	- - -		
											Bred ewes	- - -		
										Rams	-			

Ontario Live Animal Markets

29-Nov-21	OSI www.ontariosheep.org	0-50	20	3.25 - 3.25	65-80	143	3.73 - 4.48	95-110	89	2.575 - 2.89	Sheep	1.80 - 2.68	1092
		50-64	101	4.05 - 4.55	80-95	267	2.90 - 3.65	110+	32	2.06 - 2.50			
30-Nov-21	OLEX www.ontariosheep.org	0-50	92	4.25 - 4.83	65-79	430	3.60 - 4.38	95-109	573	2.75 - 3.08	Sheep	1.33 - 2.40	2487
		50-64	436	3.99 - 4.65	80-94	404	2.86 - 3.18	110+	287	2.60 - 2.94			
29-Nov-21	Embrun www.ontariosheep.org	0-50	11	4.05 - 4.90	65-79	110	3.15 - 3.85	95-109	71	2.5 - 2.84	Sheep	1.85 - 2.20	429
		50-64	44	3.50 - 4.05	80-94	160	2.85 - 3.20	110+	23	2.4 - 2.65			
25-Nov-21	Brussels www.ontariosheep.org	0-50	2	3.775 - 3.78	65-79	68	3.1 - 4.00	95-109	33	2.57 - 2.75	Sheep	1.73 - 2.40	306
		50-64	31	4 - 4.45	80-94	100	2.64 - 3.10	110+	21	2.4 - 2.65			

Alberta Lamb Producers does not endorse individual markets or verify prices provided.

Trends* in auction price for heavy lambs in Alberta



*Due to differences among auctions, prices are reported as 'trends' rather than averages.
 This graph is updated on weeks with two or more markets reporting prices.