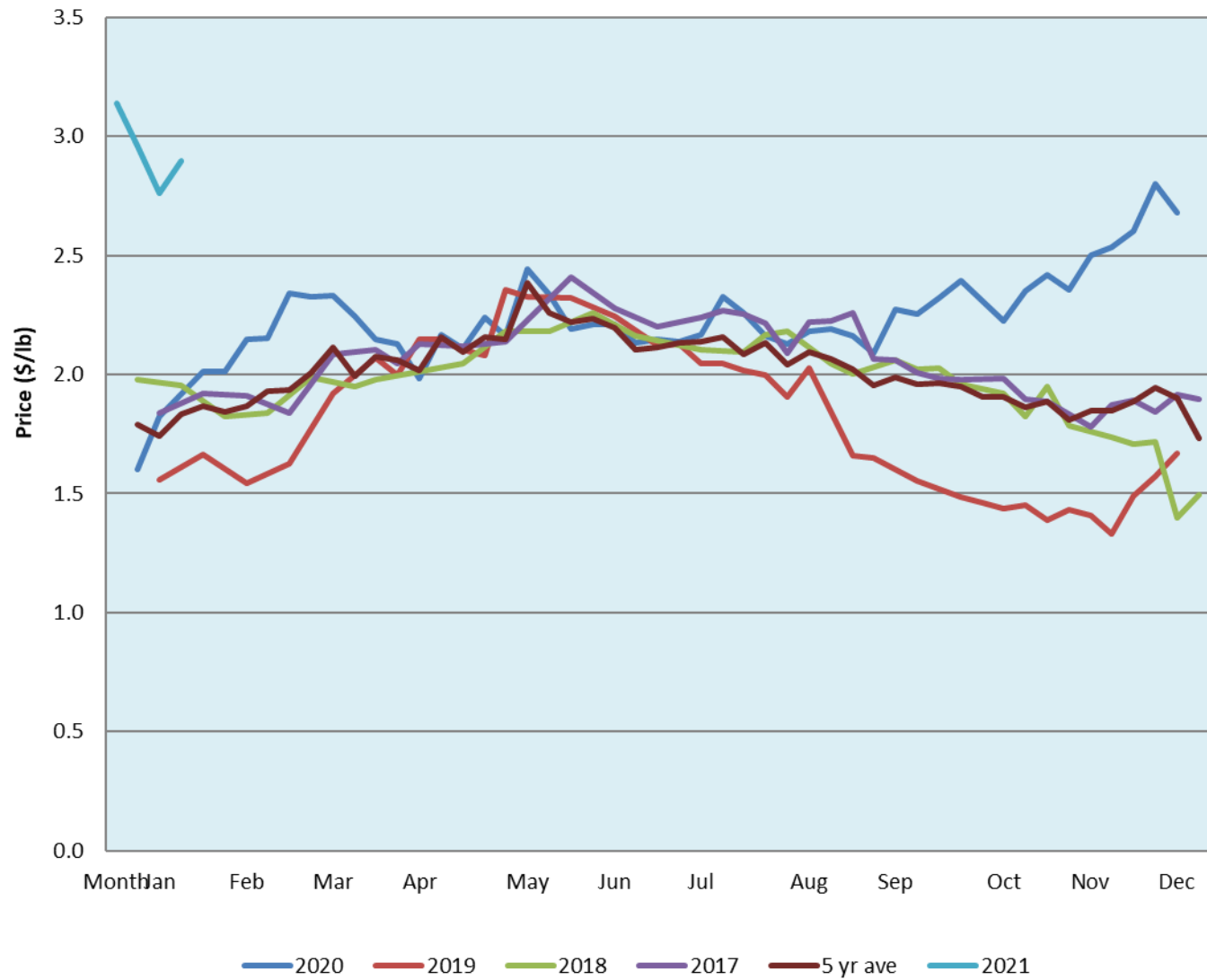


Alberta Live Animal Markets: Visit individual market websites for more information about applicable auction fees and upcoming sales										
Date	Sale	Lambs (\$/lb)		Lambs (\$/lb)		Lambs (\$/lb)		Sheep(\$/lb): Bred ewes \$/hd		Head
		Weight (lbs)	low - high	Weight (lbs)	low - high	Weight (lbs)	low - high		low - high	
No sale this week	Beaver Hill <a href="http://www.beaverhillauctions.com">www.beaverhillauctions.com</a>	0-54: wool	- - -	70-85: wool	- - -	86-105:wool	- - -	Ewes: wool	- - -	-
		0-54: hair	- - -			86-105:hair	- - -	Ewes: hair	- - -	
		55-69: wool	- - -	70-85: hair	- - -	106+:wool	- - -	Rams: wool	- - -	
		55-69: hair	- - -			106+:hair	- - -	Rams: hair	- - -	
								Bred Ewes	- - -	
						Ewe&Lamb(s)	- - -			
No sale this week	VJV Westlock <a href="http://www.vjvauction.com">www.vjvauction.com</a>	0-69: wool	- - -	70-85: wool	- - -	86-105: wool	- - -	Ewes: wool	- - -	-
						86-105: hair	- - -	Ewes: hair	- - -	
		0-69: hair	- - -	70-85: hair	- - -	106+: wool	- - -	Rams: wool	- - -	
						106+: hair	- - -	Rams: hair	- - -	
								Bred Ewes:wool	- - -	
						Ewe&Lamb:hair	- - -			
2-Feb-21	Olds Auction <a href="http://www.oldsauktion.com">www.oldsauktion.com</a>	30-50	2.00 - 2.60	70-80	3.01 - 3.64	90-100	2.95 - 3.11	Ewes	1.60 - 2.37	139  (incl.goats)
		50-60	2.75 - 3.10	80-90	3.35 - 3.60	100-110	2.93 - 3.06	Rams	1.50 - 2.05	
		60-70	3.00 - 3.50			110+	2.90 - 3.03	Bred Ewes	- - -	
30-Jan-21	Picture Butte <a href="http://www.picturebutteauction.ca">www.picturebutteauction.ca</a>					Feeder	2.88 - 3.50	Slaughter Ewes	- - -	-
						Slaughter	2.78 - 2.87	Feeder Ewes	- - -	
								Ewe&lamb(s)	- - -	
								Bred ewes	- - -	
								Rams	- - -	
Ontario Live Animal Markets										
1-Feb-21	OSI <a href="http://www.ontariosheep.org">www.ontariosheep.org</a>	0-50	0.00 - 0.00	65-80	3.70 - 4.10	95-110	3.34 - 3.34	Sheep	2.08 - 2.70	458
		50-64	3.80 - 4.00	80-95	0.00 - 0.00	110+	2.48 - 2.83			
2-Feb-21	OLEX <a href="http://www.ontariosheep.org">www.ontariosheep.org</a>	0-50	4.75 - 5.75	65-79	3.59 - 4.18	95-109	3.23 - 3.34	Sheep	1.35 - 2.15	1537
		50-64	4.05 - 4.63	80-94	3.28 - 3.40	110+	3.03 - 3.33			
1-Feb-21	Embrun <a href="http://www.ontariosheep.org">www.ontariosheep.org</a>	0-50	3.00 - 4.40	65-79	3.70 - 4.00	95-109	3.15 - 3.50	Sheep	1.85 - 2.20	162
		50-64	3.60 - 4.20	80-94	3.45 - 3.82	110+	0.00 - 0.00			
28-Jan-21	Brussels <a href="http://www.ontariosheep.org">www.ontariosheep.org</a>	0-50	4.42 - 4.45	65-79	3.63 - 4.15	95-109	3.12 - 3.25	Sheep	1.50 - 2.41	247
		50-64	4.22 - 4.52	80-94	3.07 - 3.61	110+	0.00 - 0.00			
Alberta Lamb Producers does not endorse individual markets or verify prices provided.										

## Trends\* in auction price for heavy lambs in Alberta



\*Due to differences among auctions, prices are reported as 'trends' rather than averages.  
This graph is updated on weeks with two or more markets reporting prices.