

**Alberta Live Animal Markets: Visit individual market websites for more information about applicable auction fees and upcoming sales.**

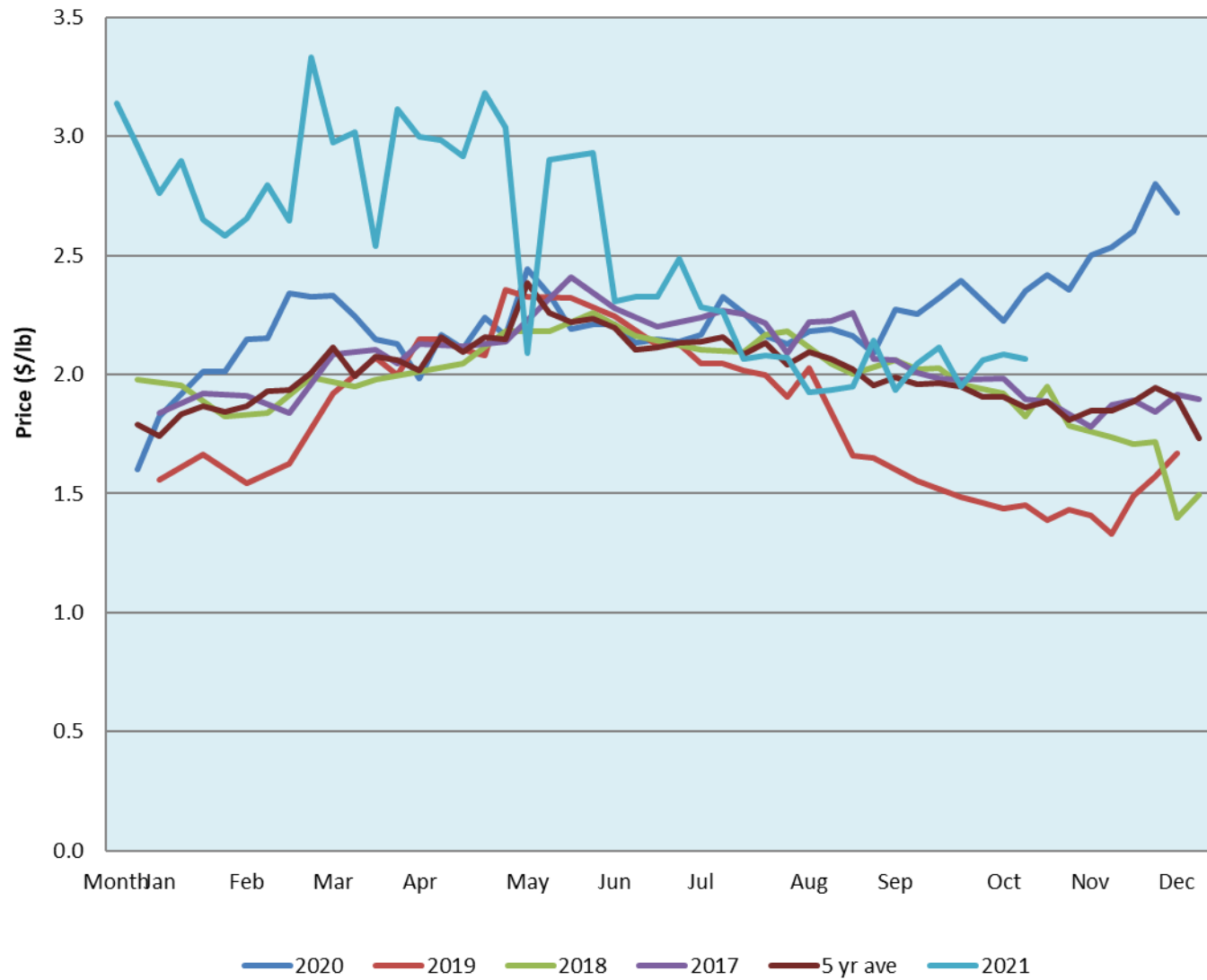
Date	Sale	Lambs (\$/lb)			Lambs (\$/lb)			Lambs (\$/lb)			Sheep(\$/lb): Bred ewes \$/hd		Total Head		
		Weight (lbs)	Head	low - high	Weight (lbs)	Head	low - high	Weight (lbs)	Head	low - high	low - high				
1-Nov-21	Beaver Hill <a href="http://www.beaverhillauctions.com">www.beaverhillauctions.com</a>	0-54: wool	-	1.80 - 2.43	70-85: wool	-	1.85 - 2.39	86-105:wool	-	1.85 - 2.33	Ewes: wool	1.20 - 1.68	881		
		0-54: hair	-	1.40 - 1.75				86-105:hair			-	1.80 - 2.15		Ewes: hair	1.00 - 2.10
		55-69: wool	-	1.90 - 2.39	70-85: hair	-	1.75 - 2.15	106+:wool	-	2.00 - 2.29	Rams: wool	1.30 - 1.65			
		55-69: hair	-	1.70 - 2.00				106+:hair			-	1.00 - 2.10		Rams: hair	1.44 - 1.70
			-								-			Bred Ewes	2.00 - 2.50
								-		Ewe&Lamb(s)	- - -				
Information unavailable	VJV Westlock <a href="http://www.vjvauction.com">www.vjvauction.com</a>	0-69: wool	-	- - -	70-85: wool	-	- - -	86-105: wool	-	- - -	Ewes: wool	- - -	-		
			-					86-105: hair	-	- - -	Ewes: hair	- - -			
			-								Rams: wool	- - -			
		0-69: hair	-	- - -	70-85: hair	-	- - -	106+: wool	-	- - -	Rams: hair	- - -			
			-					106+: hair	-	- - -	Bred Ewes:wool	- - -			
										Ewe&Lamb:hair	- - -				
2-Nov-21	Olds Auction <a href="http://www.oldsauktion.com">www.oldsauktion.com</a>	30-50	-	1.4 - 1.95	70-80	-	1.64 - 2.09	90-100	-	1.77 - 2.01	Ewes	1.43 - 1.61	339  (incl.goats)		
		50-60	-	1.9 - 2.00	80-90	-	1.94 - 2.29	100-110	-	1.91 - 2.21	Rams	1.21 - 1.47			
		60-70	-	1.66 - 1.84				110+	-	1.76 - 2.22	Bred Ewes	- - -			
Information unavailable	Picture Butte <a href="http://www.picturebutteauction.ca">www.picturebutteauction.ca</a>							Feeder	-	- - -	Slaughter Ewes	- - -	-		
								Slaughter	-	- - -	Feeder Ewes	- - -			
											Ewe&lamb(s)	- - -			
											Bred ewes	- - -			
											Rams	-			

**Ontario Live Animal Markets**

1-Nov-21	OSI <a href="http://www.ontariosheep.org">www.ontariosheep.org</a>	0-50	18	2.55 - 2.90	65-80	433	2.28 - 2.88	95-110	51	2.5 - 2.58	Sheep	1.68 - 2.00	1241
		50-64	132	2.75 - 3.15	80-95	138	2.29 - 2.61	110+	12	1.72 - 0.25			
2-Nov-21	OLEX <a href="http://www.ontariosheep.org">www.ontariosheep.org</a>	0-50	26	2.40 - 3.90	65-79	312	2.93 - 3.38	95-109	588	2.40 - 2.58	Sheep	1.63 - 2.23	2103
		50-64	178	2.85 - 3.38	80-94	433	2.55 - 2.95	110+	195	2.44 - 2.53			
1-Nov-21	Embrun <a href="http://www.ontariosheep.org">www.ontariosheep.org</a>	0-50	2	2.10 - 2.10	65-79	45	3 - 3.20	95-109	35	2.35 - 2.90	Sheep	1.35 - 1.80	198
		50-64	23	2.90 - 3.10	80-94	55	2.75 - 3.15	110+	9	1.5 - 2.40			
28-Oct-21	Brussels <a href="http://www.ontariosheep.org">www.ontariosheep.org</a>	0-50	28	2.3 - 2.30	65-79	78	2.475 - 2.89	95-109	160	2.4 - 2.65	Sheep	1.85 - 2.43	679
		50-64	100	2.5 - 2.72	80-94	142	2.5 - 2.88	110+	26	2.1 - 2.28			

**Alberta Lamb Producers does not endorse individual markets or verify prices provided.**

### Trends\* in auction price for heavy lambs in Alberta



\*Due to differences among auctions, prices are reported as 'trends' rather than averages.  
 This graph is updated on weeks with two or more markets reporting prices.