

Alberta Live Animal Markets: Visit individual market websites for more information about applicable auction fees and upcoming sales.

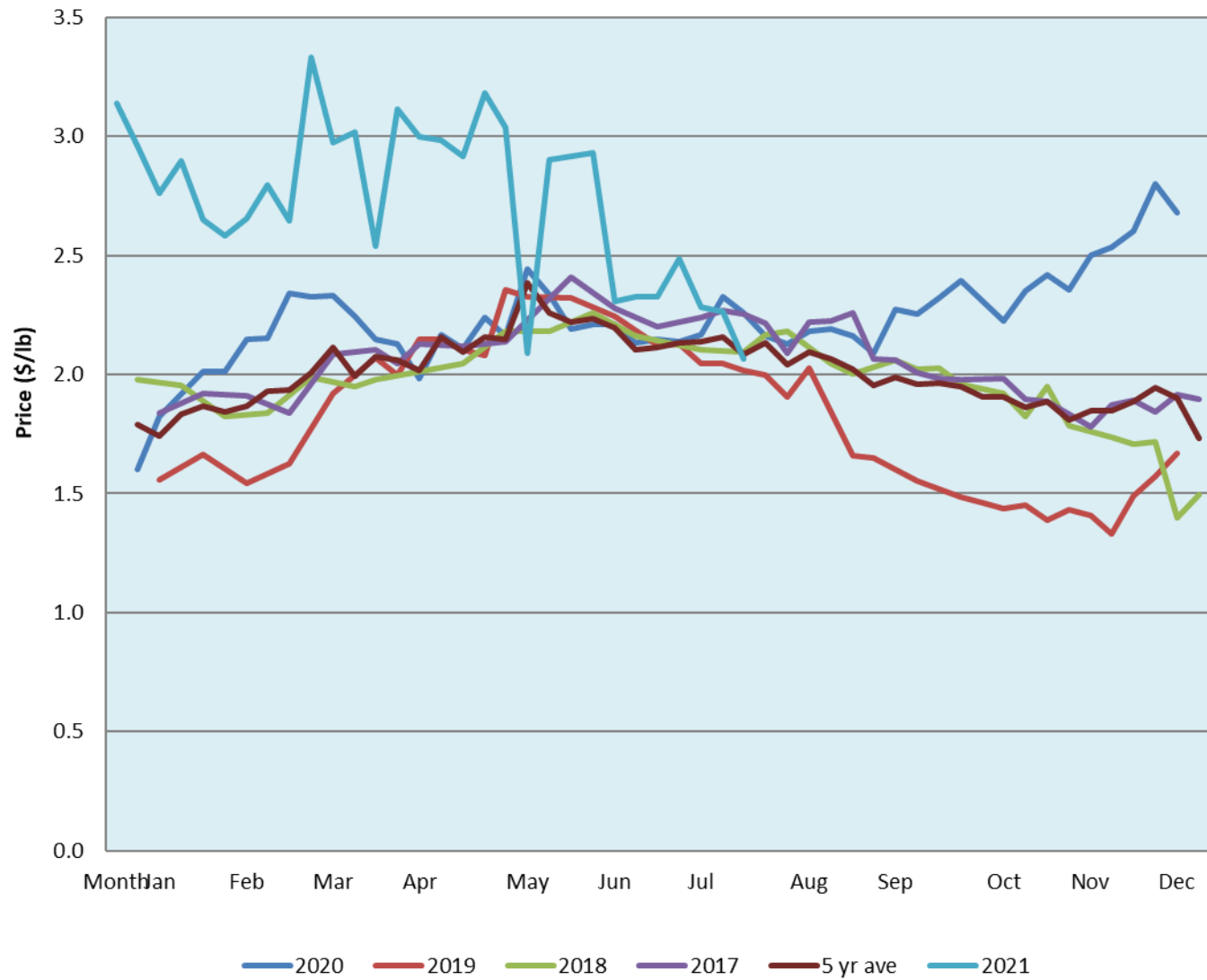
Date	Sale	Lambs (\$/lb)			Lambs (\$/lb)			Lambs (\$/lb)			Sheep(\$/lb): Bred ewes \$/hd		Total Head		
		Weight (lbs)	Head	low - high	Weight (lbs)	Head	low - high	Weight (lbs)	Head	low - high		low - high			
No sale this week	Beaver Hill www.beaverhillauctions.com	0-54: wool	-	0.00 - 0.00	70-85: wool	-	0.00 - 0.00	86-105:wool	-	0.00 - 0.00	Ewes: wool	0.00 - 0.00	0		
		0-54: hair	-	0.00 - 0.00				86-105:hair			-	0.00 - 0.00		Ewes: hair	0.00 - 0.00
		55-69: wool	-	0.00 - 0.00	70-85: hair	-	0.00 - 0.00	106+:wool	-	- 0.00	Rams: wool	0.00 - 0.00			
		55-69: hair	-	0.00 - 0.00				106+:hair			-	- 0.00		Rams: hair	0.00 - 0.00
			-								-			Bred Ewes	0.00 - 0.00
								-	- 0.00	Ewe&Lamb(s)	0 - 0				
No sale this week	VJV Westlock www.vjvauction.com	0-69: wool	-	- - -	70-85: wool	-	- - -	86-105: wool	-	- - -	Ewes: wool	- - -	-		
			-					86-105: hair			-	- - -		Ewes: hair	- - -
		0-69: hair	-	- - -	70-85: hair	-	- - -	106+: wool	-	- - -	Rams: wool	- - -			
			-					106+: hair			-	- - -		Rams: hair	- - -
			-								-			Bred Ewes:wool	- - -
								-	- - -	Ewe&Lamb:hair	- - -				
3-Aug-21	Olds Auction www.oldsauktion.com	30-50	-	2.21 - 2.74	70-80	-	1.96 - 2.30	90-100	-	1.94 - 2.23	Ewes	1.46 - 1.63	279 (incl.goats)		
		50-60	-	2.17 - 2.44	80-90	-	2.18 - 2.26	100-110	-	1.97 - 2.21	Rams	1.54 - 1.69			
		60-70	-	2.06 - 2.31				110+	-	1.89 - 2.24	Bred Ewes	- - -			
Information unavailable	Picture Butte www.picturebutteauction.ca							Feeder	-	- - -	Slaughter Ewes	- - -	-		
								Slaughter	-	- - -	Feeder Ewes	- - -			
											Ewe&lamb(s)	- - -			
											Bred ewes	- - -			
										Rams	- - -				

Ontario Live Animal Markets

2-Aug-21	OSI www.ontariosheep.org	0-50	12	2.65 - 2.80	65-80	140	2.75 - 3.05	95-110	117	2.58 - 2.70	Sheep	1.75 - 2.30	847
		50-64	39	2.61 - 3.00	80-95	244	2.65 - 2.90	110+	20	2.2 - 2.33			
3-Aug-21	OLEX www.ontariosheep.org	0-50	170	1.88 - 3.08	65-79	191	2.53 - 2.98	95-109	418	2.43 - 2.53	Sheep	1.80 - 2.40	2215
		50-64	263	2.48 - 3.20	80-94	672	2.48 - 2.75	110+	227	2.30 - 2.39			
2-Aug-21	Embrun www.ontariosheep.org	0-50	20	2.05 - 3.40	65-79	187	2.6 - 2.82	95-109	27	2.65 - 2.95	Sheep	1.60 - 1.80	515
		50-64	62	2.50 - 2.80	80-94	140	2.55 - 2.88	110+	5	2.25 - 2.50			
29-Jul-21	Brussels www.ontariosheep.org	0-50	9	2.6 - 2.70	65-79	48	2.42 - 2.80	95-109	114	2.4 - 2.44	Sheep	0.85 - 2.00	395
		50-64	62	2.56 - 2.76	80-94	87	2.4 - 2.55	110+	13	2.27 - 2.41			

Alberta Lamb Producers does not endorse individual markets or verify prices provided.

Trends* in auction price for heavy lambs in Alberta



*Due to differences among auctions, prices are reported as 'trends' rather than averages.
 This graph is updated on weeks with two or more markets reporting prices.