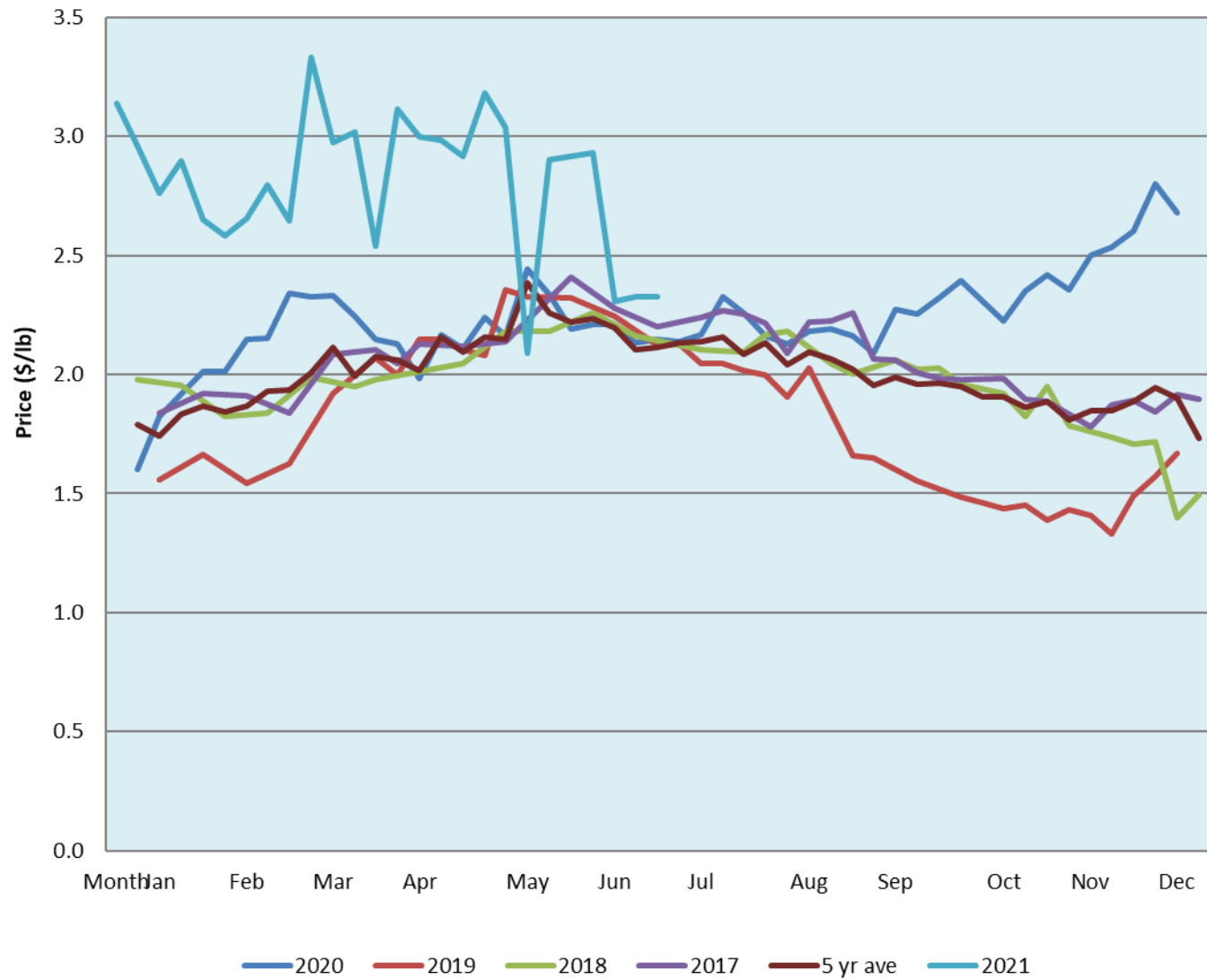


Alberta Live Animal Markets: Visit individual market websites for more information about applicable auction fees and upcoming sales										
Date	Sale	Lambs (\$/lb)		Lambs (\$/lb)		Lambs (\$/lb)		Sheep(\$/lb): Bred ewes \$/hd		Head
		Weight (lbs)	low - high	Weight (lbs)	low - high	Weight (lbs)	low - high		low - high	
5-Jul-21	Beaver Hill www.beaverhillauctions.com	0-54: wool	2.35 - 2.65	70-85: wool	2.30 - 2.80	86-105:wool	2.30 - 2.65	Ewes: wool	1.30 - 2.55	1190
		0-54: hair	1.50 - 2.00			86-105:hair	2.25 - 2.53	Ewes: hair	1.30 - 1.60	
		55-69: wool	2.30 - 2.80	70-85: hair	2.25 - 2.65	106+:wool	2.25 - 2.49	Rams: wool	1.50 - 2.05	
		55-69: hair	1.90 - 2.40			106+:hair	2.15 - 2.25	Rams: hair	1.70 - 2.30	
								Bred Ewes	- - -	
						Ewe&Lamb(s)	- - -			
No sale this week	VJV Westlock www.vjvauction.com	0-69: wool	- - -	70-85: wool	- - -	86-105: wool	- - -	Ewes: wool	- - -	-
						86-105: hair	- - -	Ewes: hair	- - -	
		0-69: hair	- - -	70-85: hair	- - -	106+: wool	- - -	Rams: wool	- - -	
						106+: hair	- - -	Rams: hair	- - -	
								Bred Ewes:wool	- - -	
								Ewe&Lamb:hair	- - -	
6-Jul-21	Olds Auction www.oldsauction.com	30-50	2.30 - 2.54	70-80	2.23 - 2.50	90-100	2.44 - 2.59	Ewes	1.41 - 1.70	318 (incl.goats)
		50-60	2.30 - 2.41	80-90	2.53 - 2.66	100-110	2.26 - 2.43	Rams	1.57 - 1.61	
		60-70	2.18 - 2.38			110+	2.26 - 2.43	Bred Ewes	- - -	
3-Jul-21	Picture Butte www.picturebutteauction.ca					Feeder	2.40 - 3.00	Slaughter Ewes	0.90 - 1.25	-
						Slaughter	2.18 - 2.35	Feeder Ewes	1.67 - 1.67	
								Ewe&lamb(s)	- - -	
								Bred ewes	- - -	
								Rams	- - -	
Ontario Live Animal Markets										
5-Jul-21	OSI www.ontariosheep.org	0-50	2.55 - 3.50	65-80	3.20 - 3.35	95-110	2.80 - 2.90	Sheep	1.55 - 2.25	1151
		50-64	3.25 - 3.70	80-95	2.90 - 3.10	110+	2.40 - 2.78			
6-Jul-21	OLEX www.ontariosheep.org	0-50	3.23 - 4.00	65-79	3.10 - 3.38	95-109	2.78 - 2.98	Sheep	1.03 - 2.28	2919
		50-64	3.23 - 3.43	80-94	2.85 - 3.15	110+	2.63 - 2.83			
5-Jul-21	Embrun www.ontariosheep.org	0-50	2.60 - 3.50	65-79	3.10 - 3.80	95-109	3.35 - 4.00	Sheep	1.40 - 2.30	482
		50-64	2.65 - 3.10	80-94	3.40 - 4.00	110+	3.10 - 3.80			
1-Jul-21	Brussels www.ontariosheep.org	0-50	3.70 - 3.70	65-79	2.80 - 3.00	95-109	2.64 - 2.72	Sheep	1.15 - 2.30	432
		50-64	3.40 - 3.70	80-94	2.67 - 2.81	110+	2.50 - 2.59			
Alberta Lamb Producers does not endorse individual markets or verify prices provided.										

Trends* in auction price for heavy lambs in Alberta



*Due to differences among auctions, prices are reported as 'trends' rather than averages.
 This graph is updated on weeks with two or more markets reporting prices.