

Alberta Live Animal Markets: Visit individual market websites for more information about applicable auction fees and upcoming sales.

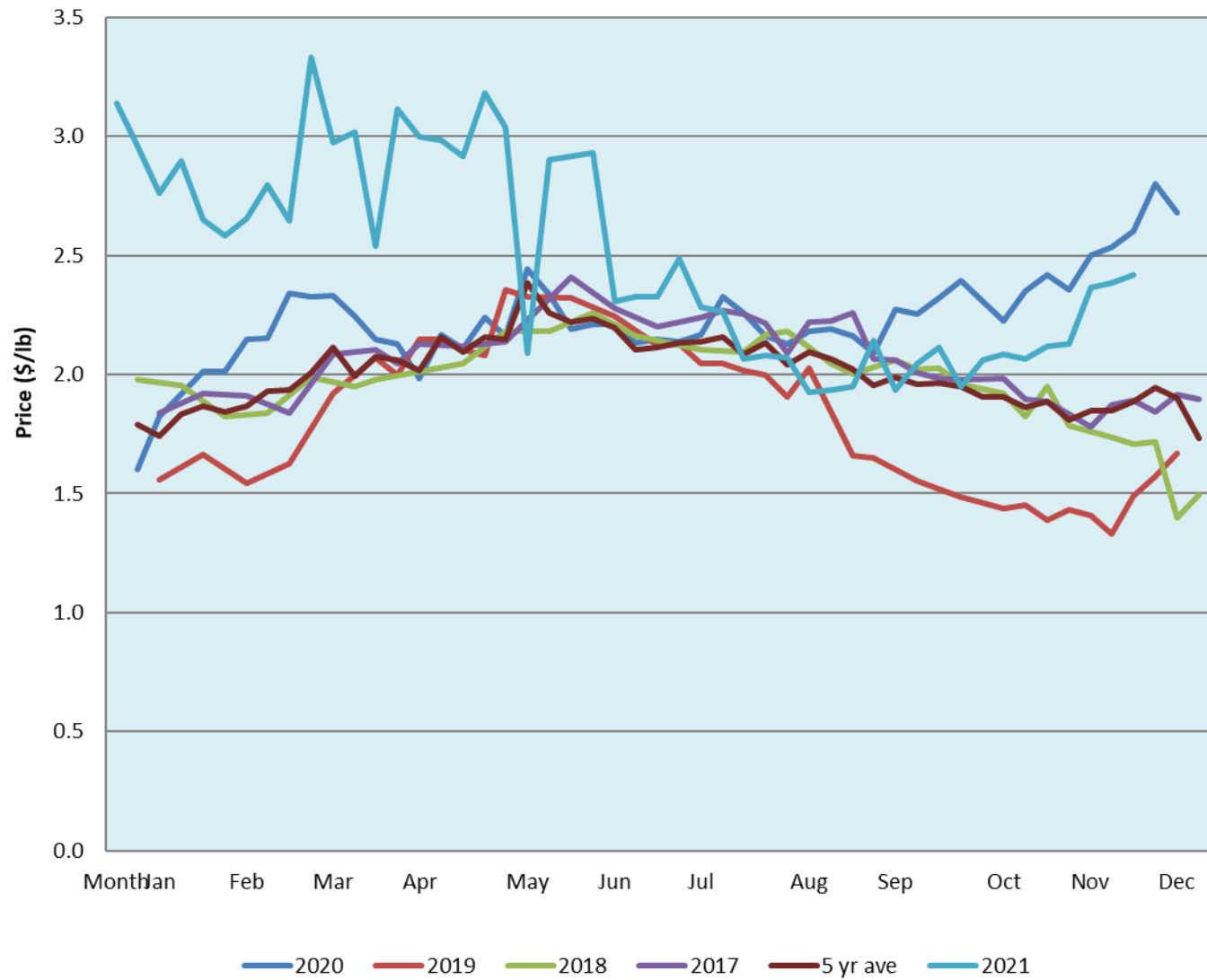
Date	Sale	Lambs (\$/lb)			Lambs (\$/lb)			Lambs (\$/lb)			Sheep(\$/lb): Bred ewes \$/hd		Total Head		
		Weight (lbs)	Head	low - high	Weight (lbs)	Head	low - high	Weight (lbs)	Head	low - high	low - high	low - high			
6-Dec-21	Beaver Hill www.beaverhillauctions.com	0-54: wool	-	3.10 - 3.80	70-85: wool	-	2.85 - 3.60	86-105:wool	-	2.30 - 3.20	Ewes: wool	1.40 - 2.10	1202		
		0-54: hair	-	2.40 - 3.25				86-105:hair			-	2.30 - 2.95		Rams: wool	1.62 - 2.34
		55-69: wool	-	3.20 - 3.75				106+:wool			-	2.40 - 2.55		Rams: hair	1.50 - 2.10
		55-69: hair	-	2.80 - 3.59	70-85: hair	-	2.50 - 3.50	106+:hair	-	1.50 - 2.40	Bred Ewes	3.00 - 3.90			
											Ewe&Lamb(s)	- - -			
7-Dec-21	VJV Westlock www.vjvauction.com	0-69: wool	-	2.1 - 3.50	70-85: wool	-	2.3 - 3.30	86-105: wool	-	2.2 - 3.20	Ewes: wool	1.55 - 1.85	362		
								86-105: hair	-	- - -	Ewes: hair	- - -			
											Rams: wool	1.50 - 1.80			
		0-69: hair	-	1.8 - 2.60	70-85: hair	-	1.6 - 2.30	106+: wool	-	1.95 - 3.10	Rams: hair	- - -			
											Bred Ewes:wool	- - -			
7-Dec-21	Olds Auction www.oldsauktion.com	30-50	-	2 - 2.17	70-80	-	3.15 - 3.22	90-100	-	2.42 - 2.62	Ewes	1.55 - 1.66	250 (incl.goats)		
		50-60	-	2.55 - 3.33	80-90	-	2.84 - 2.96	100-110	-	2.47 - 2.64	Rams	1.48 - 1.71			
		60-70	-	3.16 - 3.33				110+	-	2.47 - 2.64	Bred Ewes	- - -			
4-Dec-21	Picture Butte www.picturebutteauction.ca							Feeder	-	1.96 - 2.14	Slaughter Ewes	1.08 - 1.23	-		
								Slaughter	-	2.1 - 2.36	Feeder Ewes	- - -			
											Ewe&lamb(s)	- - -			
											Bred ewes	- - -			
										Rams	-				

Ontario Live Animal Markets

6-Dec-21	OSI www.ontariosheep.org	0-50	112	2.10 - 3.95	65-80	799	3.88 - 4.30	95-110	130	2.71 - 2.93	Sheep	1.95 - 2.90	1951
		50-64	312	4.1 - 4.55	80-95	286	2.90 - 3.75	110+	64	2.25 - 2.73			
7-Dec-21	OLEX www.ontariosheep.org	0-50	126	3.80 - 4.83	65-79	737	3.18 - 4.18	95-109	691	2.85 - 3.10	Sheep	1.60 - 3.10	2986
		50-64	534	3.78 - 4.55	80-94	403	3.03 - 3.25	110+	274	2.65 - 2.98			
6-Dec-21	Embrun www.ontariosheep.org	0-50	32	3.70 - 4.40	65-79	125	3.65 - 4.10	95-109	38	3.1 - 3.30	Sheep	1.55 - 2.20	404
		50-64	75	3.85 - 4.20	80-94	90	3.1 - 3.85	110+	3	2.9 - 3.15			
2-Dec-21	Brussels www.ontariosheep.org	0-50	1	3.6 - 3.60	65-79	87	2.9 - 4.50	95-109	73	2.55 - 2.99	Sheep	1.05 - 2.50	457
		50-64	94	3.65 - 5.00	80-94	86	2.74 - 3.30	110+	46	2.27 - 2.65			

Alberta Lamb Producers does not endorse individual markets or verify prices provided.

Trends* in auction price for heavy lambs in Alberta



*Due to differences among auctions, prices are reported as 'trends' rather than averages.
 This graph is updated on weeks with two or more markets reporting prices.