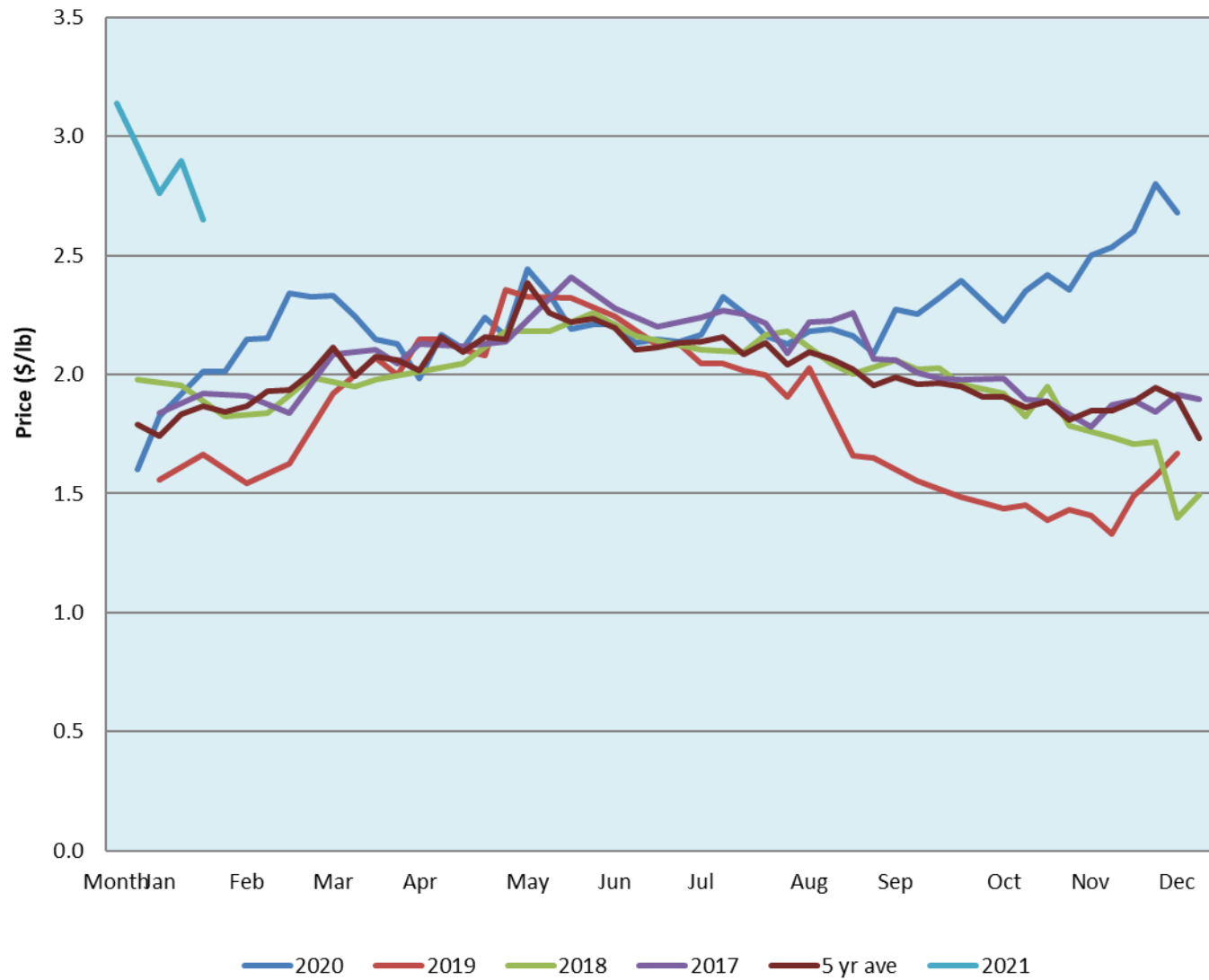


Alberta Live Animal Markets: Visit individual market websites for more information about applicable auction fees and upcoming sales										
Date	Sale	Lambs (\$/lb)		Lambs (\$/lb)		Lambs (\$/lb)		Sheep(\$/lb): Bred ewes \$/hd		Head
		Weight (lbs)	low - high	Weight (lbs)	low - high	Weight (lbs)	low - high		low - high	
8-Feb-21	Beaver Hill www.beaverhillauctions.com	0-54: wool	3.60 - 4.20	70-85: wool	3.60 - 4.07	86-105:wool	2.90 - 3.40	Ewes: wool	1.32 - 2.40	536
		0-54: hair	3.00 - 3.65			86-105:hair	2.80 - 3.40	Ewes: hair	1.30 - 2.50	
		55-69: wool	3.50 - 4.30	70-85: hair	3.40 - 3.85	106+:wool	2.45 - 2.85	Rams: wool	1.63 - 2.20	
		55-69: hair	3.30 - 4.00			Bred Ewes	3.60 - 4.60			
						106+:hair	2.40 - 2.80	Ewe&Lamb(s)	5 - 6	
No sale this week	VJV Westlock www.vjvauction.com	0-69: wool	- - -	70-85: wool	- - -	86-105: wool	- - -	Ewes: wool	- - -	
						86-105: hair	- - -	Ewes: hair	- - -	
		0-69: hair	- - -	70-85: hair	- - -	106+: wool	- - -	Rams: wool	- - -	
						106+: hair	- - -	Rams: hair	- - -	
								Bred Ewes:wool	- - -	
						Ewe&Lamb:hair	- - -			
information unavailable	Olds Auction www.oldsauction.com	30-50	- - -	70-80	- - -	90-100	- - -	Ewes	- - -	-
		50-60	- - -	80-90	- - -	100-110	- - -	Rams	- - -	
		60-70	- - -			110+	- - -	Bred Ewes	- - -	
								(incl.goats)		
No sale this week	Picture Butte www.picturebutteauction.ca					Feeder	- - -	Slaughter Ewes	- - -	-
						Slaughter	- - -	Feeder Ewes	- - -	
								Ewe&lamb(s)	- - -	
								Bred ewes	- - -	
								Rams	- - -	
Ontario Live Animal Markets										
8-Feb-21	OSI www.ontariosheep.org	0-50	3.60 - 4.10	65-80	3.65 - 4.00	95-110	3.07 - 3.18	Sheep	1.50 - 1.95	706
		50-64	3.50 - 4.08	80-95	3.30 - 3.75	110+	2.28 - 2.75			
9-Feb-21	OLEX www.ontariosheep.org	0-50	5.45 - 6.05	65-79	3.74 - 4.20	95-109	3.31 - 3.44	Sheep	1.00 - 2.00	1580
		50-64	4.28 - 4.85	80-94	3.33 - 3.75	110+	2.85 - 3.32			
8-Feb-21	Embrun www.ontariosheep.org	0-50	0.00 - 0.00	65-79	3.75 - 3.92	95-109	3.50 - 3.68	Sheep	1.25 - 1.97	200
		50-64	3.70 - 3.85	80-94	3.65 - 3.95	110+	2.80 - 3.58			
4-Feb-21	Brussels www.ontariosheep.org	0-50	4.47 - 4.80	65-79	4.03 - 4.32	95-109	3.32 - 3.50	Sheep	1.60 - 2.40	249
		50-64	4.17 - 4.47	80-94	3.48 - 3.61	110+	2.45 - 3.42			
Alberta Lamb Producers does not endorse individual markets or verify prices provided.										

Trends* in auction price for heavy lambs in Alberta



*Due to differences among auctions, prices are reported as 'trends' rather than averages.
This graph is updated on weeks with two or more markets reporting prices.