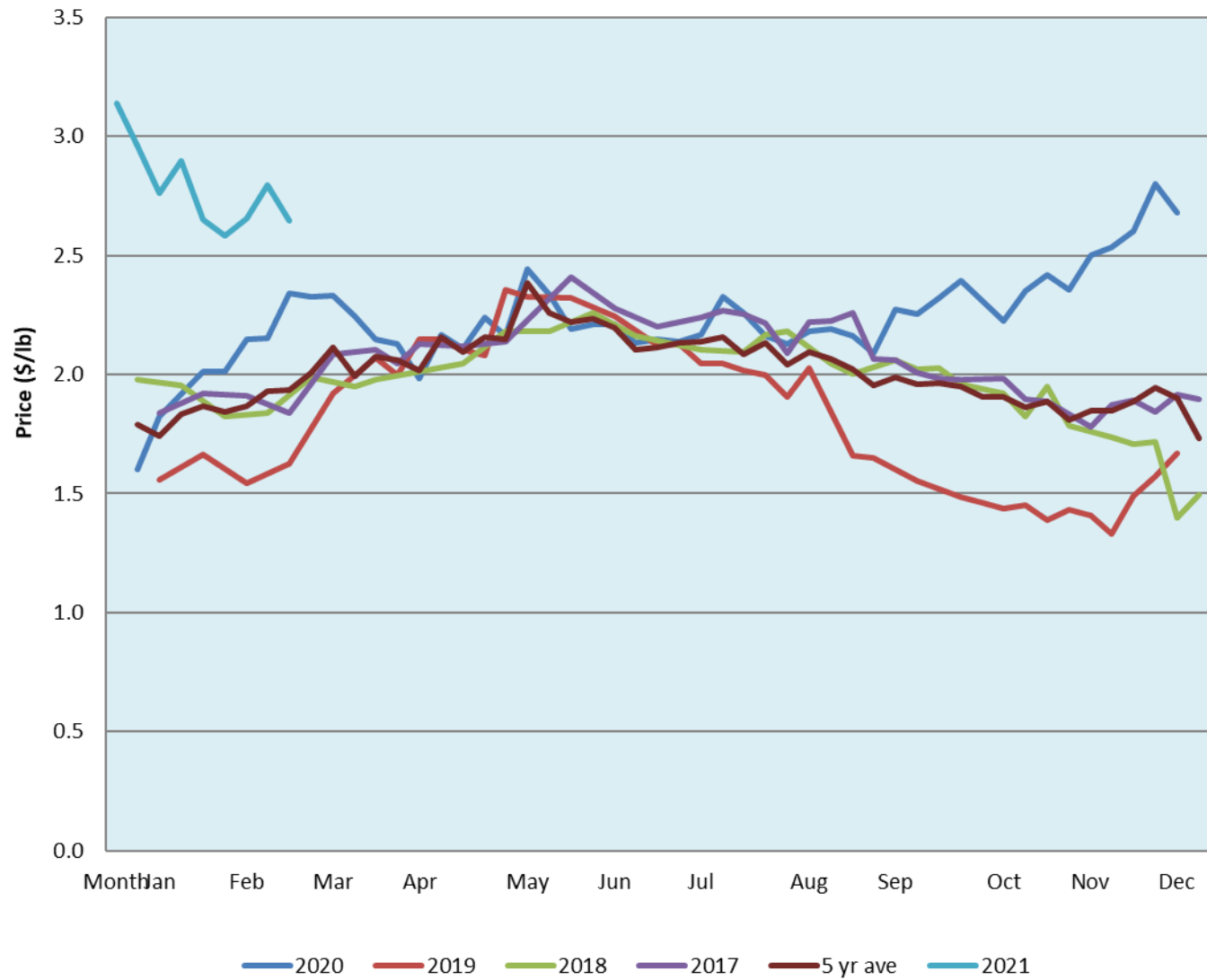


Alberta Live Animal Markets: Visit individual market websites for more information about applicable auction fees and upcoming sales										
Date	Sale	Lambs (\$/lb)		Lambs (\$/lb)		Lambs (\$/lb)		Sheep(\$/lb): Bred ewes \$/hd		Head
		Weight (lbs)	low - high	Weight (lbs)	low - high	Weight (lbs)	low - high		low - high	
8-Mar-21	Beaver Hill www.beaverhillauctions.com	0-54: wool	3.68 - 4.45	70-85: wool	3.37 - 3.90	86-105:wool	2.90 - 3.60	Ewes: wool	1.37 - 2.65	949
		0-54: hair	3.60 - 4.35			86-105:hair	2.80 - 3.60	Ewes: hair	1.58 - 2.50	
		55-69: wool	3.80 - 4.65	70-85: hair	3.20 - 3.75	106+:wool	2.50 - 2.87	Rams: wool	1.50 - 2.70	
		55-69: hair	3.50 - 4.10			Bred Ewes	3.10 - 4.20			
						106+:hair	2.30 - 2.70	Ewe&Lamb(s)	- - -	
No sale this week	VJV Westlock www.vjvauction.com	0-69: wool	- - -	70-85: wool	- - -	86-105: wool	- - -	Ewes: wool	- - -	-
						86-105: hair	- - -	Ewes: hair	- - -	
		0-69: hair	- - -	70-85: hair	- - -	106+: wool	- - -	Rams: wool	- - -	
						106+: hair	- - -	Rams: hair	- - -	
								Bred Ewes:wool	- - -	
9-Mar-21	Olds Auction www.oldsauction.com	30-50	3.86 - 4.09	70-80	3.51 - 4.04	90-100	3.07 - 3.51	Ewes	2.33 - 2.47	173 (incl.goats)
		50-60	3.91 - 4.20	80-90	3.18 - 3.72	100-110	2.04 - 2.47	Rams	1.70 - 2.06	
		60-70	3.51 - 4.07			110+	1.88 - 2.11	Bred Ewes	- - -	
6-Mar-21	Picture Butte www.picturebutteauction.ca					Feeder	3.00 - 3.60	Slaughter Ewes	1.57 - 2.01	-
						Slaughter	2.88 - 3.10	Feeder Ewes	1.57 - 2.01	
								Ewe&lamb(s)	- - -	
								Bred ewes	- - -	
								Rams	- - -	
Ontario Live Animal Markets										
8-Mar-21	OSI www.ontariosheep.org	0-50	3.85 - 3.85	65-80	4.00 - 4.38	95-110	3.30 - 3.41	Sheep	1.89 - 3.00	546
		50-64	4.35 - 4.55	80-95	3.50 - 4.00	110+	3.00 - 3.15			
9-Mar-21	OLEX www.ontariosheep.org	0-50	4.90 - 5.80	65-79	3.91 - 4.40	95-109	3.23 - 3.38	Sheep	1.58 - 2.85	1960
		50-64	4.14 - 5.10	80-94	3.40 - 3.68	110+	3.00 - 3.37			
8-Mar-21	Embrun www.ontariosheep.org	0-50	0.00 - 0.00	65-79	3.95 - 4.52	95-109	2.75 - 3.31	Sheep	1.80 - 2.50	430
		50-64	4.48 - 4.89	80-94	3.27 - 3.47	110+	2.78 - 3.15			
4-Mar-21	Brussels www.ontariosheep.org	0-50	4.50 - 4.50	65-79	3.96 - 4.20	95-109	3.20 - 3.30	Sheep	1.70 - 3.25	353
		50-64	4.18 - 4.91	80-94	3.29 - 3.57	110+	2.59 - 2.69			
Alberta Lamb Producers does not endorse individual markets or verify prices provided.										

Trends* in auction price for heavy lambs in Alberta



*Due to differences among auctions, prices are reported as 'trends' rather than averages.
 This graph is updated on weeks with two or more markets reporting prices.