

Alberta Live Animal Markets: Visit individual market websites for more information about applicable auction fees and upcoming sales.

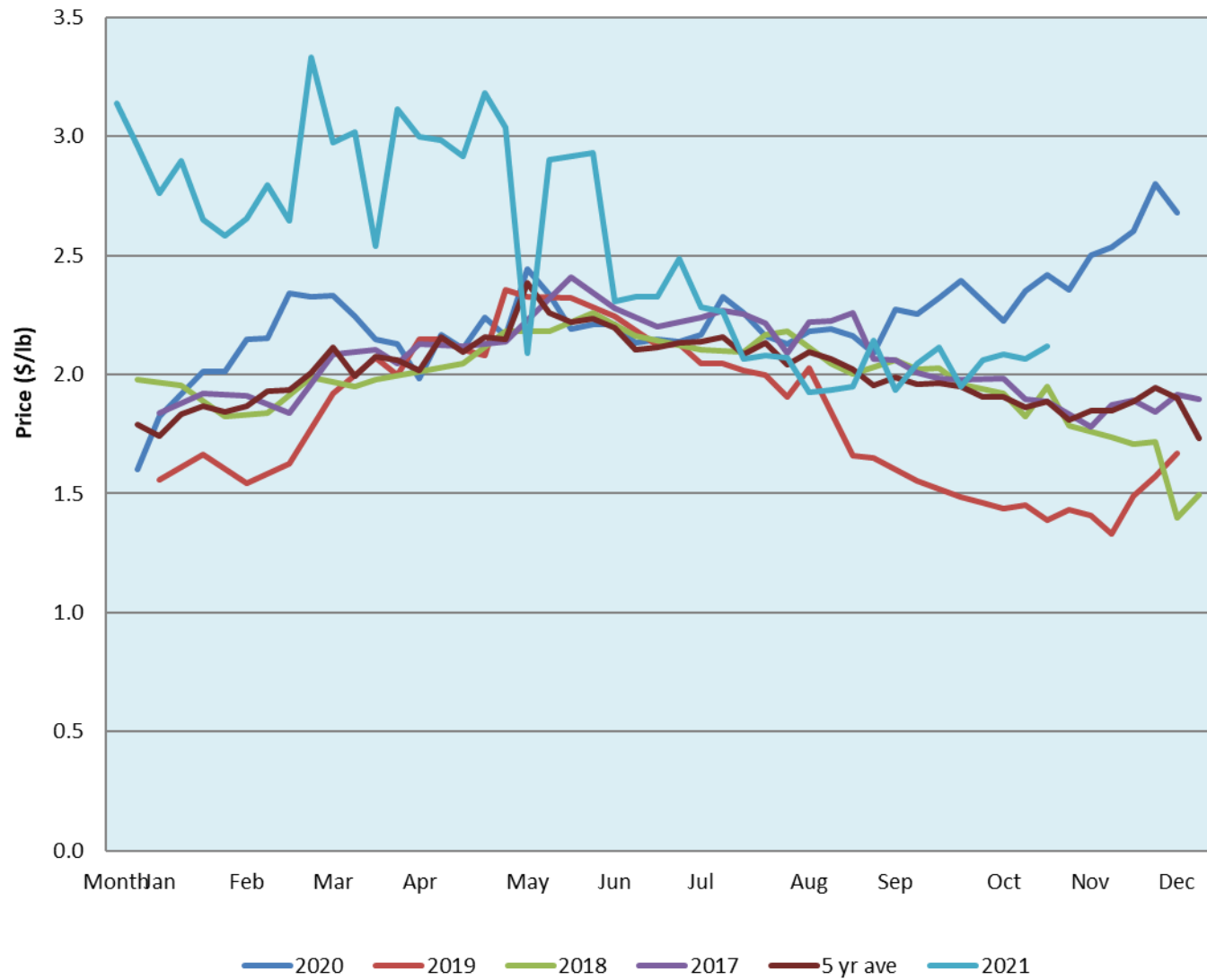
Date	Sale	Lambs (\$/lb)			Lambs (\$/lb)			Lambs (\$/lb)			Sheep(\$/lb): Bred ewes \$/hd		Total Head		
		Weight (lbs)	Head	low - high	Weight (lbs)	Head	low - high	Weight (lbs)	Head	low - high	low - high	low - high			
8-Nov-21	Beaver Hill www.beaverhillauctions.com	0-54: wool	-	2.20 - 2.65	70-85: wool	-	2.17 - 2.75	86-105:wool	-	2.05 - 2.43	Ewes: wool	1.25 - 2.00	671		
		0-54: hair	-	1.90 - 2.35				86-105:hair			-	1.85 - 2.25		Rams: wool	1.34 - 1.85
		55-69: wool	-	2.40 - 2.79	70-85: hair	-	1.93 - 2.59	106+:wool	-	2.10 - 2.29	Rams: hair	1.54 - 1.95			
		55-69: hair	-	2.10 - 2.40				106+:hair			-	1.20 - 2.13		Bred Ewes	2.00 - 2.50
			-								-			Ewe&Lamb(s)	- - -
No sale this week	VJV Westlock www.vjvauction.com	0-69: wool	-	- - -	70-85: wool	-	- - -	86-105: wool	-	- - -	Ewes: wool	- - -	-		
			-			-		86-105: hair	-	- - -	Ewes: hair	- - -			
			-			-			106+: wool	-	- - -	Rams: wool		- - -	
		0-69: hair	-	- - -	70-85: hair	-	- - -	106+: hair	-	- - -	Rams: hair	- - -			
			-			-				-	- - -	Bred Ewes:wool		- - -	
9-Nov-21	Olds Auction www.oldsauktion.com	30-50	-	1.1 - 1.70	70-80	-	1.9 - 2.14	90-100	-	2 - 2.34	Ewes	0.97 - 1.31	104 (incl.goats)		
		50-60	-	1.54 - 2.07	80-90	-	1.79 - 2.16	100-110	-	2 - 2.19	Rams	1.46 - 1.58			
		60-70	-	1.89 - 2.11				110+	-	2.01 - 2.24	Bred Ewes	- - -			
6-Nov-21	Picture Butte www.picturebutteauction.ca							Feeder	-	1.61 - 1.89	Slaughter Ewes	0.88 - 1.17	-		
								Slaughter	-	1.93 - 2.04	Feeder Ewes	- - -			
											Ewe&lamb(s)	- - -			
											Bred ewes	- - -			
										Rams	-				

Ontario Live Animal Markets

8-Nov-21	OSI www.ontariosheep.org	0-50	39	2.83 - 2.85	65-80	278	2.50 - 3.01	95-110	146	2.475 - 2.71	Sheep	1.56 - 2.00	1250
		50-64	114	2.75 - 3.44	80-95	116	2.52 - 2.85	110+	82	2.36 - 2.55			
9-Nov-21	OLEX www.ontariosheep.org	0-50	49	3.35 - 4.35	65-79	313	2.88 - 3.40	95-109	602	2.48 - 2.65	Sheep	1.65 - 2.20	2260
		50-64	129	3.05 - 4.00	80-94	510	2.66 - 2.95	110+	287	2.35 - 2.63			
8-Nov-21	Embrun www.ontariosheep.org	0-50	14	2.70 - 3.85	65-79	124	3.05 - 3.25	95-109	43	2.4 - 2.60	Sheep	1.55 - 1.86	348
		50-64	40	3.10 - 3.65	80-94	55	2.6 - 3.28	110+	14	1.85 - 2.48			
4-Nov-21	Brussels www.ontariosheep.org	0-50	11	2.35 - 2.50	65-79	235	2.35 - 2.60	95-109	198	1.98 - 2.43	Sheep	1.75 - 2.15	659
		50-64	254	2.54 - 3.03	80-94	236	2.36 - 2.47	110+	199	1.99 - 2.43			

Alberta Lamb Producers does not endorse individual markets or verify prices provided.

Trends* in auction price for heavy lambs in Alberta



*Due to differences among auctions, prices are reported as 'trends' rather than averages.
 This graph is updated on weeks with two or more markets reporting prices.