

Alberta Live Animal Markets: Visit individual market websites for more information about applicable auction fees and upcoming sales.

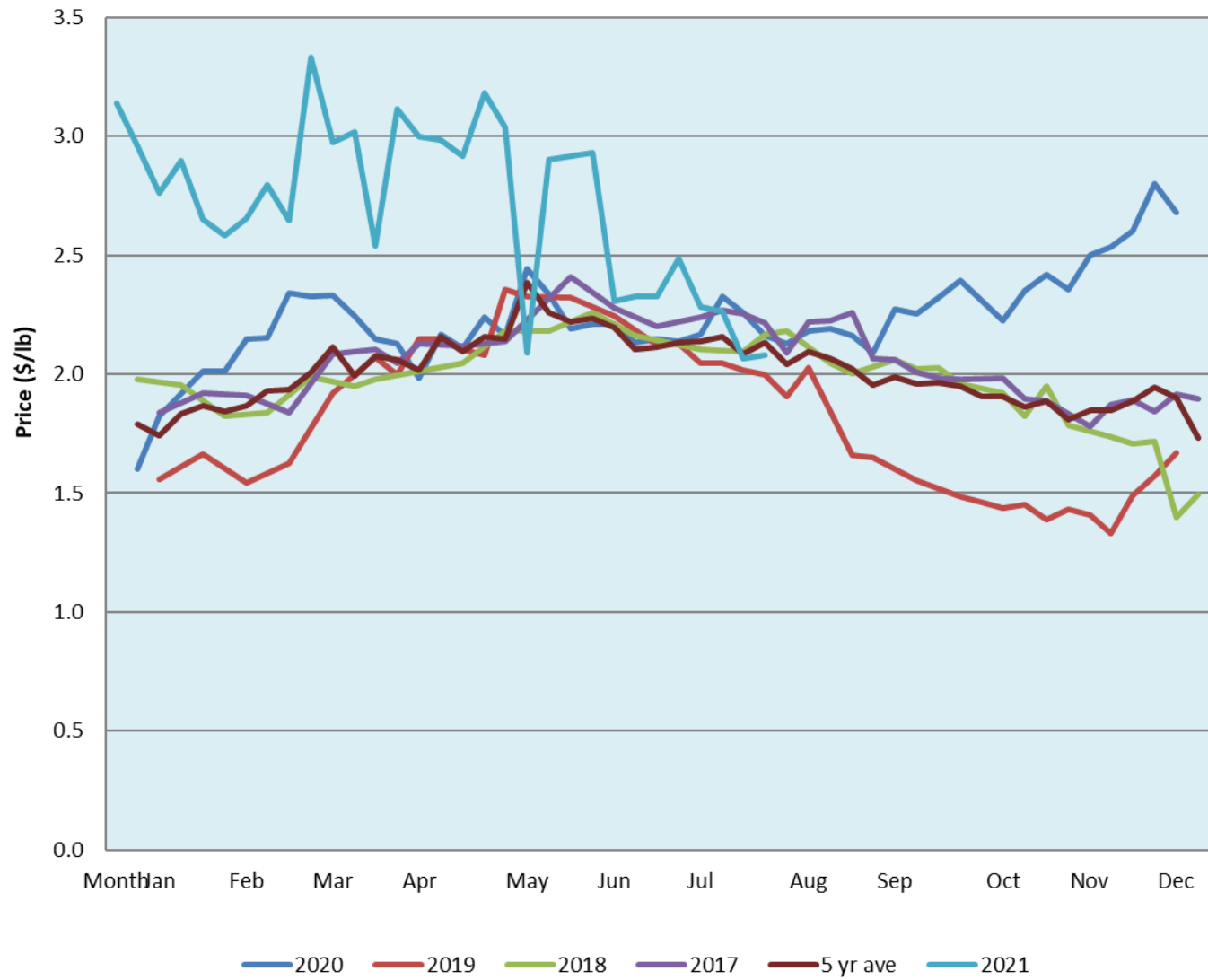
Date	Sale	Lambs (\$/lb)			Lambs (\$/lb)			Lambs (\$/lb)			Sheep(\$/lb): Bred ewes \$/hd		Total Head		
		Weight (lbs)	Head	low - high	Weight (lbs)	Head	low - high	Weight (lbs)	Head	low - high	low - high				
9-Aug-21	Beaver Hill www.beaverhillauctions.com	0-54: wool	-	1.95 - 2.42	70-85: wool	-	1.95 - 2.28	86-105:wool	-	1.90 - 2.32	Ewes: wool	1.20 - 1.95	2245		
		0-54: hair	-	1.50 - 1.75				86-105:hair			-	1.80 - 2.20		Rams: wool	1.35 - 2.05
		55-69: wool	-	2.00 - 2.39	70-85: hair	-	1.80 - 2.10	106+:wool	-	1.95 - 2.26	Rams: hair	1.30 - 2.05			
		55-69: hair	-	1.90 - 2.00				106+:hair			-	1.8 - 2.15		Bred Ewes	0.00 - 0.00
			-								-			Ewe&Lamb(s)	0 - 0
No sale this week	VJV Westlock www.vjvauction.com	0-69: wool	-	- - -	70-85: wool	-	- - -	86-105: wool	-	- - -	Ewes: wool	- - -	-		
			-					86-105: hair			-	- - -		Rams: wool	- - -
		0-69: hair	-	- - -	70-85: hair	-	- - -	106+: wool	-	- - -	Rams: hair	- - -			
			-					106+: hair			-	- - -		Bred Ewes:wool	- - -
			-								-			Ewe&Lamb:hair	- - -
10-Aug-21	Olds Auction www.oldsauktion.com	30-50	-	1.6 - 1.87	70-80	-	2.09 - 2.21	90-100	-	2.09 - 2.14	Ewes	1.36 - 1.41	353 (incl.goats)		
		50-60	-	1.47 - 1.93	80-90	-	2.15 - 2.18	100-110	-	2.17 - 2.22	Rams	1.47 - 1.54			
		60-70	-	1.45 - 2.01				110+	-	2.08 - 2.12	Bred Ewes	- - -			
7-Aug-21	Picture Butte www.picturebutteauction.ca							Feeder	-	2.3 - 2.50	Slaughter Ewes	0.97 - 1.03	-		
								Slaughter	-	1.99 - 2.07	Feeder Ewes	- - -			
											Ewe&lamb(s)	- - -			
											Bred ewes	- - -			
										Rams	- - -				

Ontario Live Animal Markets

9-Aug-21	OSI www.ontariosheep.org	0-50	7	2.90 - 3.50	65-80	330	2.50 - 2.78	95-110	162	2.39 - 2.60	Sheep	1.66 - 2.28	1538
		50-64	91	2.775 - 3.22	80-95	366	2.42 - 2.60	110+	50	2.1 - 2.29			
10-Aug-21	OLEX www.ontariosheep.org	0-50	57	2.23 - 3.70	65-79	290	2.62 - 3.10	95-109	752	2.25 - 2.54	Sheep	1.50 - 2.30	2365
		50-64	209	2.60 - 3.50	80-94	371	2.35 - 2.88	110+	222	1.95 - 2.41			
9-Aug-21	Embrun www.ontariosheep.org	0-50	5	2.30 - 3.15	65-79	170	2.69 - 3.00	95-109	55	2.4 - 2.52	Sheep	1.35 - 1.90	440
		50-64	25	2.70 - 3.22	80-94	129	2.48 - 2.78	110+	5	1.7 - 2.70			
5-Aug-21	Brussels www.ontariosheep.org	0-50	4	2.5 - 3.02	65-79	36	2.7 - 2.90	95-109	120	2.4 - 2.49	Sheep	2.00 - 2.20	303
		50-64	23	2.77 - 3.07	80-94	63	2.48 - 2.64	110+	33	2.1 - 2.47			

Alberta Lamb Producers does not endorse individual markets or verify prices provided.

Trends* in auction price for heavy lambs in Alberta



*Due to differences among auctions, prices are reported as 'trends' rather than averages.
 This graph is updated on weeks with two or more markets reporting prices.