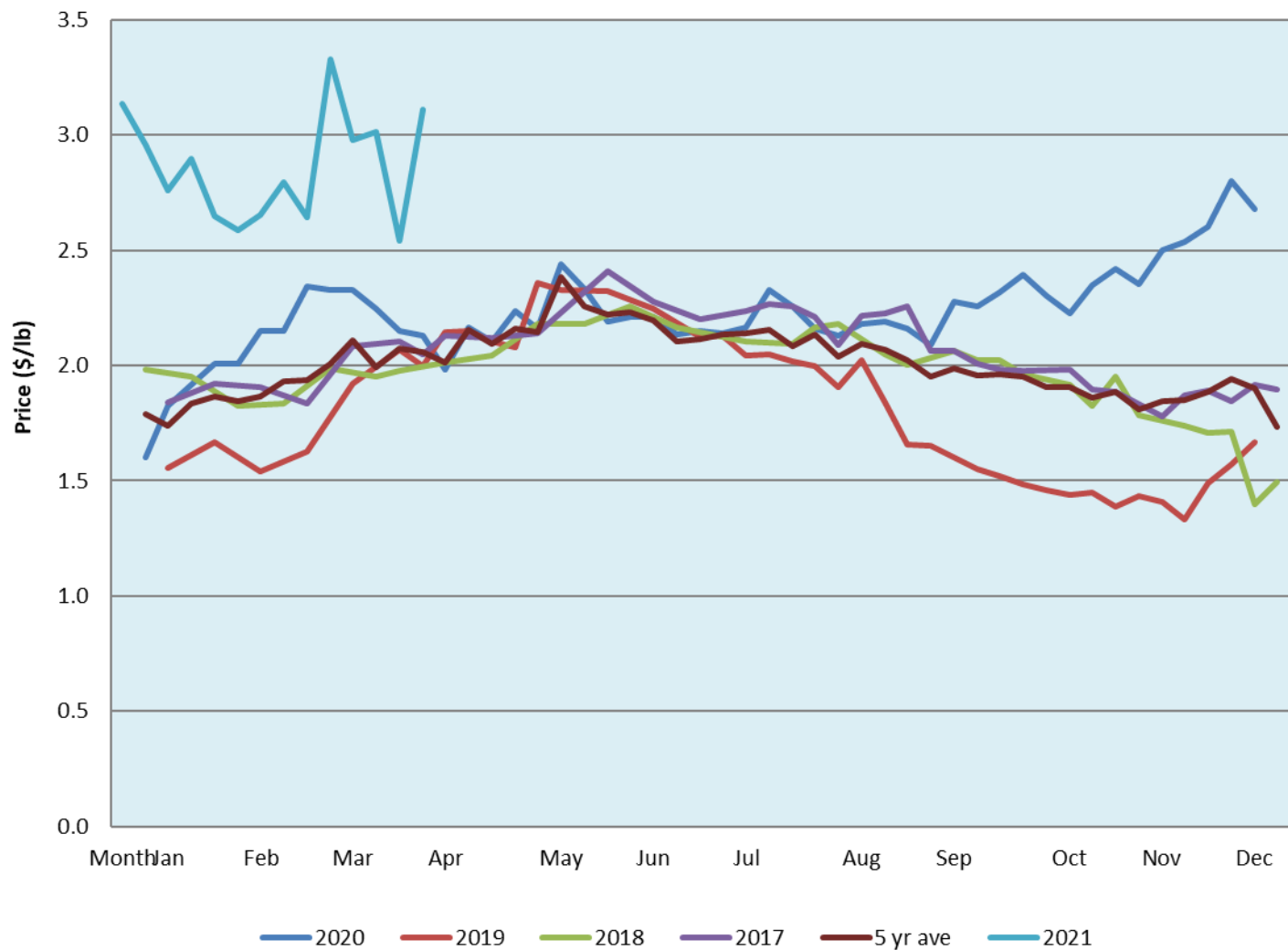


Alberta Live Animal Markets: Visit individual market websites for more information about applicable auction fees and upcoming sales

Date	Sale	Lambs (\$/lb)		Lambs (\$/lb)		Lambs (\$/lb)		Sheep(\$/lb): Bred ewes \$/hd		Head
		Weight (lbs)	low - high	Weight (lbs)	low - high	Weight (lbs)	low - high		low - high	
12-Apr-21	Beaver Hill www.beaverhillauctions.com	0-54: wool	4.20 - 4.76	70-85: wool	3.50 - 4.10	86-105:wool	2.85 - 3.70	Ewes: wool	1.37 - 2.35	638
		0-54: hair	4.00 - 4.65			86-105:hair	2.80 - 3.65	Ewes: hair	1.20 - 1.90	
		55-69: wool	3.70 - 4.50	70-85: hair	3.60 - 3.85	106+:wool	2.70 - 3.20	Rams: wool	1.55 - 3.05	
		55-69: hair	3.50 - 4.00			106+:hair	2.30 - 2.80	Rams: hair	1.40 - 2.60	
								Bred Ewes	3.10 - 4.50	
						Ewe&Lamb(s)	4 - 5			
No sale this week	VJV Westlock www.vjvauction.com	0-69: wool	- - -	70-85: wool	- - -	86-105: wool	- - -	Ewes: wool	- - -	-
						86-105: hair	- - -	Ewes: hair	- - -	
		0-69: hair	- - -	70-85: hair	- - -	106+: wool	- - -	Rams: wool	- - -	
						106+: hair	- - -	Rams: hair	- - -	
								Bred Ewes:wool	- - -	
								Ewe&Lamb:hair	- - -	
13-Apr-21	Olds Auction www.oldsauktion.com	30-50	4.15 - 4.50	70-80	3.20 - 3.42	90-100	2.90 - 3.25	Ewes	1.63 - 1.92	55 (incl.goats)
		50-60	4.00 - 4.37	80-90	2.97 - 3.39	100-110	2.90 - 3.25	Rams	1.57 - 1.85	
		60-70	3.60 - 3.90			110+	2.90 - 3.20	Bred Ewes	- - -	
10-Apr-21	Picture Butte www.picturebutteauction.ca					Feeder	2.89 - 3.63	Slaughter Ewes	- - -	-
						Slaughter	3.05 - 3.63	Feeder Ewes	- - -	
								Ewe&lamb(s)	- - -	
								Bred ewes	- - -	
								Rams	- - -	
Ontario Live Animal Markets										
12-Apr-21	OSI www.ontariosheep.org	0-50	4.33 - 5.00	65-80	4.40 - 4.85	95-110	3.86 - 4.08	Sheep	1.48 - 2.90	726
		50-64	4.63 - 4.95	80-95	4.00 - 4.60	110+	3.30 - 3.80			
13-Apr-21	OLEX www.ontariosheep.org	0-50	3.58 - 5.63	65-79	4.15 - 4.60	95-109	3.98 - 4.14	Sheep	0.88 - 1.95	2865
		50-64	4.31 - 4.75	80-94	4.08 - 4.28	110+	3.53 - 4.12			
12-Apr-21	Embrun www.ontariosheep.org	0-50	5.45 - 5.50	65-79	4.38 - 4.65	95-109	4.25 - 4.55	Sheep	0.87 - 1.80	444
		50-64	4.40 - 4.80	80-94	4.35 - 4.75	110+	2.80 - 3.75			
8-Apr-21	Brussels www.ontariosheep.org	0-50	4.40 - 4.70	65-79	4.26 - 4.55	95-109	3.96 - 4.14	Sheep	1.37 - 2.30	562
		50-64	4.20 - 4.65	80-94	4.07 - 4.40	110+	3.07 - 3.40			
Alberta Lamb Producers does not endorse individual markets or verify prices provided.										

Trends* in auction price for heavy lambs in Alberta



*Due to differences among auctions, prices are reported as 'trends' rather than averages. This graph is updated on weeks with two or more markets reporting prices.