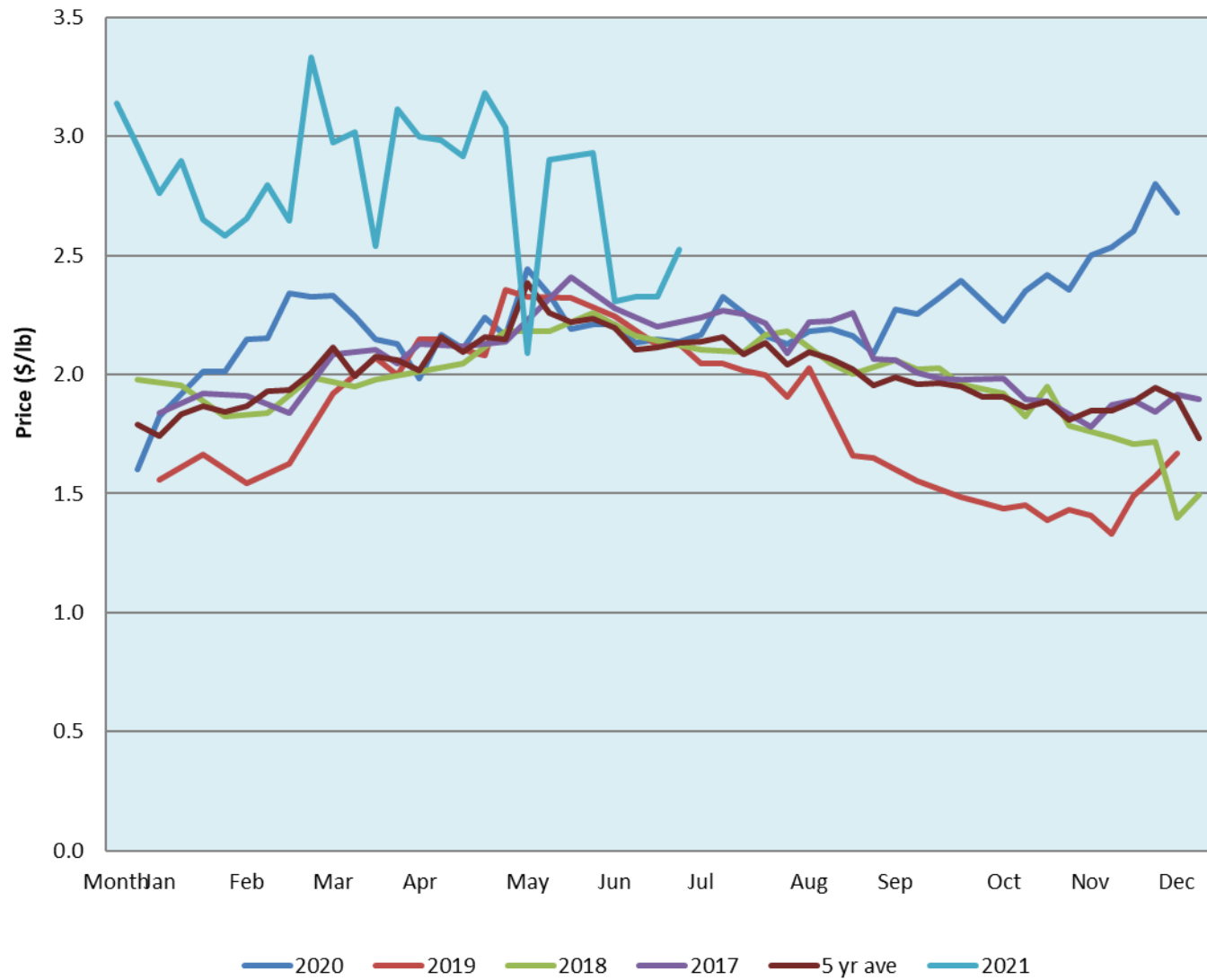


Alberta Live Animal Markets: Visit individual market websites for more information about applicable auction fees and upcoming sales										
Date	Sale	Lambs (\$/lb)		Lambs (\$/lb)		Lambs (\$/lb)		Sheep(\$/lb): Bred ewes \$/hd		Head
		Weight (lbs)	low - high	Weight (lbs)	low - high	Weight (lbs)	low - high		low - high	
Information unavailable	Beaver Hill www.beaverhillauctions.com	0-54: wool	- - -	70-85: wool	- - -	86-105:wool	- - -	Ewes: wool	- - -	-
		0-54: hair	- - -			86-105:hair	- - -	Ewes: hair	- - -	
		55-69: wool	- - -	70-85: hair	- - -	106+:wool	- - -	Rams: wool	- - -	
		55-69: hair	- - -			106+:hair	- - -	Rams: hair	- - -	
								Bred Ewes	- - -	
						Ewe&Lamb(s)	- - -			
Information unavailable	VJV Westlock www.vjvauction.com	0-69: wool	- - -	70-85: wool	- - -	86-105: wool	- - -	Ewes: wool	- - -	-
						86-105: hair	- - -	Ewes: hair	- - -	
		0-69: hair	- - -	70-85: hair	- - -	106+: wool	- - -	Rams: wool	- - -	
						106+: hair	- - -	Rams: hair	- - -	
								Bred Ewes:wool	- - -	
						Ewe&Lamb:hair	- - -			
13-Jul-21	Olds Auction www.oldsauction.com	30-50	2.45 - 2.77	70-80	2.41 - 2.66	90-100	2.47 - 2.75	Ewes	1.68 - 1.92	863 (incl.goats)
		50-60	2.42 - 2.75	80-90	2.53 - 2.67	100-110	2.30 - 2.75	Rams	1.71 - 2.07	
		60-70	2.50 - 2.72			110+	2.30 - 2.75	Bred Ewes	- - -	
Information unavailable	Picture Butte www.picturebutteauction.ca					Feeder	- - -	Slaughter Ewes	- - -	-
						Slaughter	- - -	Feeder Ewes	- - -	
								Ewe&lamb(s)	- - -	
								Bred ewes	- - -	
								Rams	- - -	
Ontario Live Animal Markets										
12-Jul-21	OSI www.ontariosheep.org	0-50	1.00 - 2.90	65-80	2.90 - 3.26	95-110	2.85 - 3.13	Sheep	1.43 - 2.25	1970
		50-64	2.29 - 3.08	80-95	3.00 - 3.20	110+	2.74 - 2.83			
13-Jul-21	OLEX www.ontariosheep.org	0-50	3.00 - 4.50	65-79	2.58 - 2.90	95-109	2.60 - 2.73	Sheep	1.50 - 2.15	6152
		50-64	2.58 - 3.08	80-94	2.60 - 2.83	110+	2.50 - 2.70			
12-Jul-21	Embrun www.ontariosheep.org	0-50	2.00 - 3.10	65-79	2.95 - 3.42	95-109	3.07 - 3.70	Sheep	1.22 - 1.85	1508
		50-64	2.50 - 3.17	80-94	3.17 - 3.65	110+	3.05 - 3.50			
8-Jul-21	Brussels www.ontariosheep.org	0-50	2.75 - 3.35	65-79	2.76 - 3.10	95-109	2.67 - 2.85	Sheep	1.70 - 2.60	928
		50-64	2.79 - 3.35	80-94	2.75 - 2.88	110+	2.45 - 2.67			
Alberta Lamb Producers does not endorse individual markets or verify prices provided.										

Trends* in auction price for heavy lambs in Alberta



*Due to differences among auctions, prices are reported as 'trends' rather than averages.
 This graph is updated on weeks with two or more markets reporting prices.