

Alberta Live Animal Markets: Visit individual market websites for more information about applicable auction fees and upcoming sales.

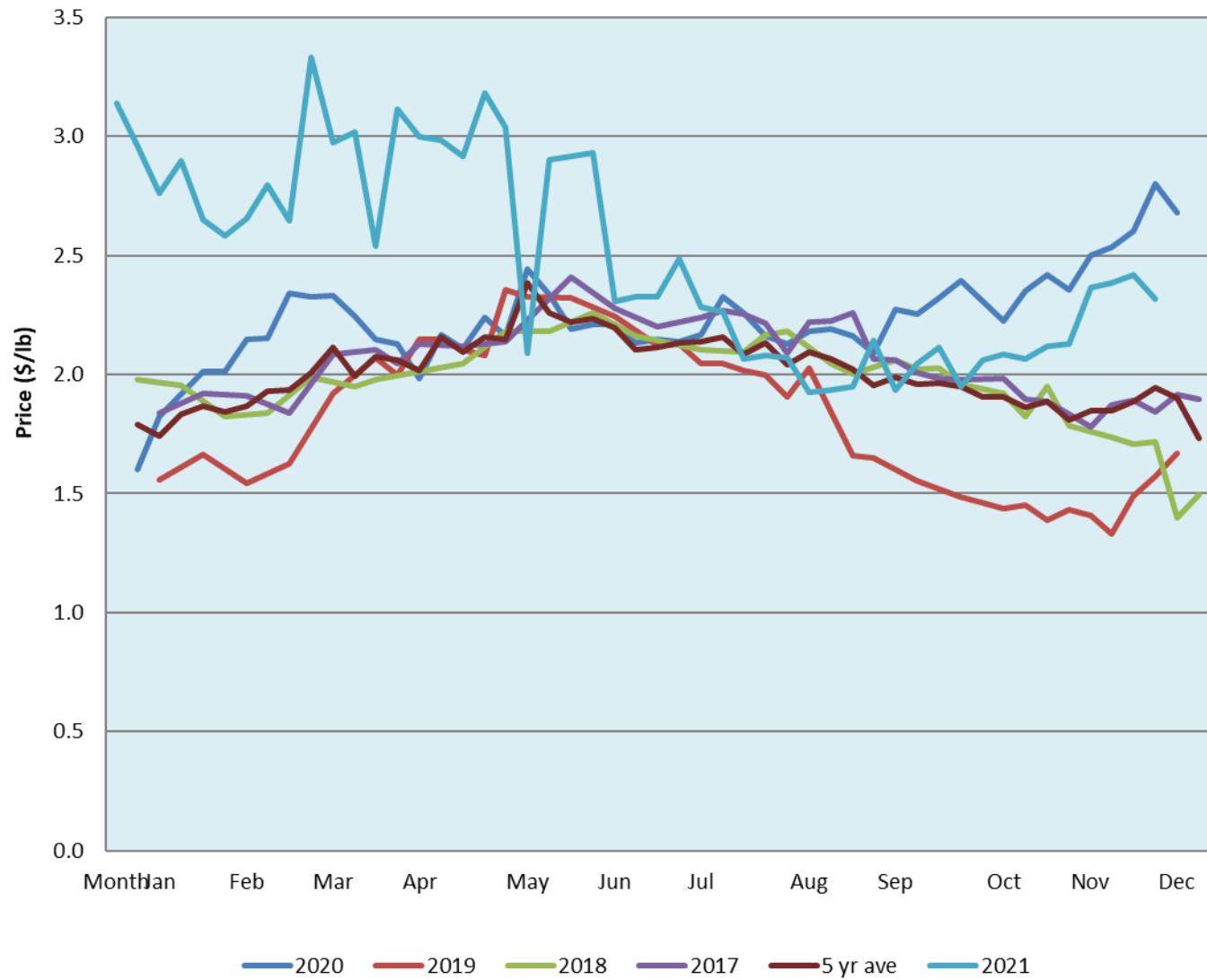
Date	Sale	Lambs (\$/lb)			Lambs (\$/lb)			Lambs (\$/lb)			Sheep(\$/lb): Bred ewes \$/hd		Total Head		
		Weight (lbs)	Head	low - high	Weight (lbs)	Head	low - high	Weight (lbs)	Head	low - high	low - high	low - high			
13-Dec-21	Beaver Hill www.beaverhillauctions.com	0-54: wool	-	2.80 - 3.70	70-85: wool	-	2.75 - 3.60	86-105:wool	-	2.35 - 3.30	Ewes: wool	1.40 - 2.12	1607		
		0-54: hair	-	2.40 - 3.25				86-105:hair			-	2.35 - 2.96		Rams: wool	1.72 - 1.95
		55-69: wool	-	2.80 - 3.84	70-85: hair	-	2.20 - 3.20	106+:wool	-	2.40 - 2.60	Rams: hair	1.70 - 2.30			
		55-69: hair	-	2.40 - 3.64				106+:hair			-	1.50 - 2.45		Bred Ewes	3.00 - 3.90
			-								-			Ewe&Lamb(s)	- - -
No sale this week	VJV Westlock www.vjvauction.com	0-69: wool	-	- - -	70-85: wool	-	- - -	86-105: wool	-	- - -	Ewes: wool	- - -	-		
			-			-		86-105: hair	-	- - -	Ewes: hair	- - -			
			-			-			106+: wool	-	- - -	Rams: wool		- - -	
		0-69: hair	-	- - -	70-85: hair	-	- - -	106+: wool	-	- - -	Rams: hair	- - -			
			-			-		106+: hair	-	- - -	Bred Ewes:wool	- - -			
information unavailable	Olds Auction www.oldsauktion.com	30-50	-	- - -	70-80	-	- - -	90-100	-	- - -	Ewes	- - -	-		
		50-60	-	- - -	80-90	-	- - -	100-110	-	- - -	Rams	- - -			
		60-70	-	- - -				110+	-	- - -	Bred Ewes	- - -		(incl.goats)	
11-Dec-21	Picture Butte www.picturebutteauction.ca							Feeder	-	2.18 - 2.36	Slaughter Ewes	1.02 - 1.18	-		
								Slaughter	-	2.09 - 2.17	Feeder Ewes	- - -			
											Ewe&lamb(s)	- - -			
											Bred ewes	- - -			
										Rams	-				

Ontario Live Animal Markets

13-Dec-21	OSI www.ontariosheep.org	0-50	169	3.35 - 3.95	65-80	701	3.10 - 4.30	95-110	184	2.7 - 2.95	Sheep	2.25 - 3.30	2473
		50-64	352	3.8 - 4.35	80-95	579	2.95 - 3.38	110+	61	2.525 - 3.55			
14-Dec-21	OLEX www.ontariosheep.org	0-50	145	2.83 - 4.68	65-79	1237	3.35 - 4.45	95-109	498	3.05 - 3.65	Sheep	2.35 - 3.10	4142
		50-64	687	3.85 - 4.95	80-94	742	3.25 - 3.60	110+	307	2.85 - 3.20			
13-Dec-21	Embrun www.ontariosheep.org	0-50	12	3.60 - 4.70	65-79	188	3.55 - 3.95	95-109	52	2.87 - 3.20	Sheep	1.70 - 2.65	560
		50-64	95	3.80 - 4.25	80-94	187	3.25 - 3.70	110+	11	2.7 - 2.95			
9-Dec-21	Brussels www.ontariosheep.org	0-50	22	2.35 - 4.00	65-79	100	3.075 - 4.31	95-109	27	2.875 - 3.07	Sheep	2.00 - 2.85	396
		50-64	127	4.22 - 4.50	80-94	55	3.1 - 3.46	110+	26	2.2 - 2.75			

Alberta Lamb Producers does not endorse individual markets or verify prices provided.

Trends* in auction price for heavy lambs in Alberta



*Due to differences among auctions, prices are reported as 'trends' rather than averages.
This graph is updated on weeks with two or more markets reporting prices.