

Alberta Live Animal Markets: Visit individual market websites for more information about applicable auction fees and upcoming sales.

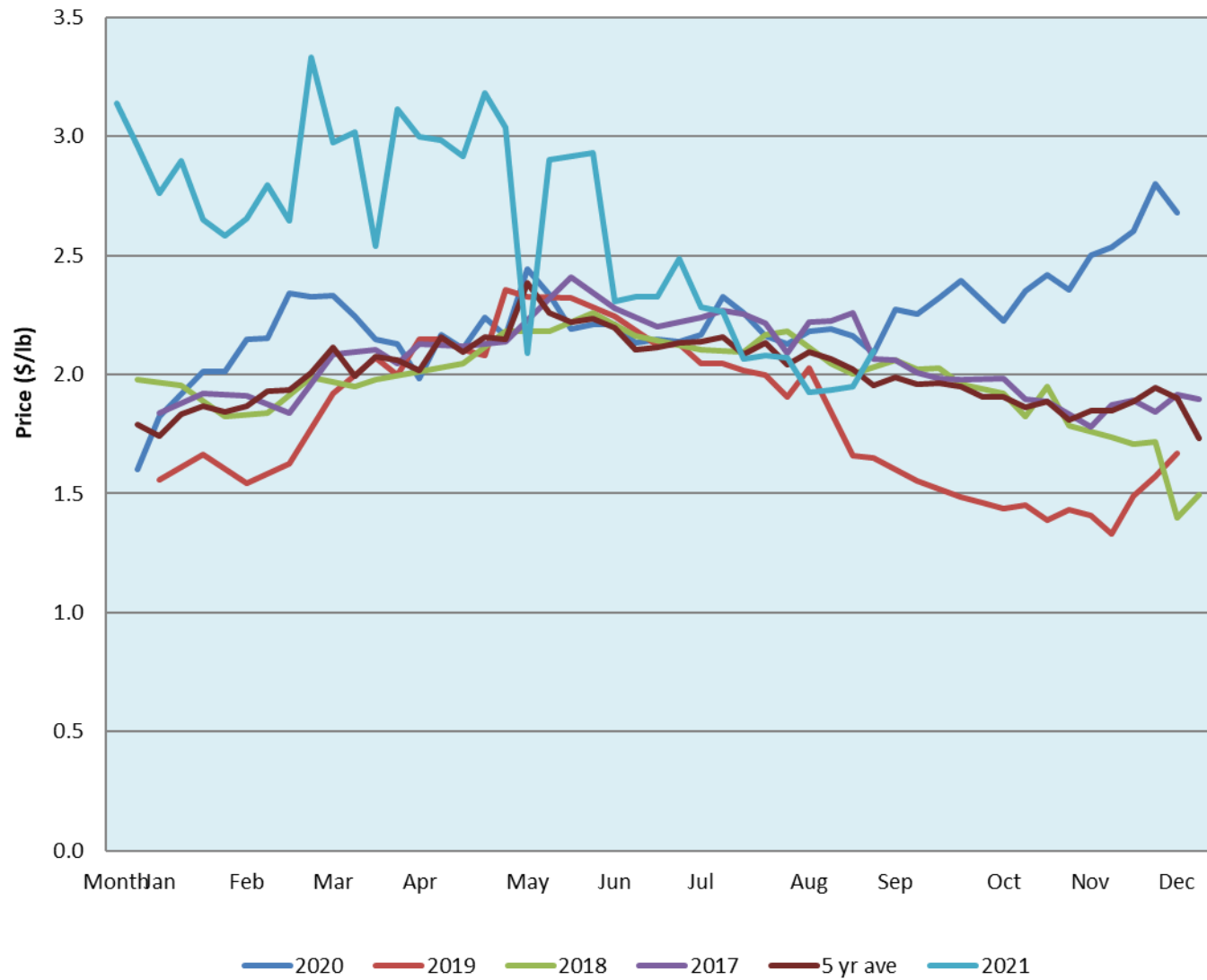
Date	Sale	Lambs (\$/lb)			Lambs (\$/lb)			Lambs (\$/lb)			Sheep(\$/lb): Bred ewes \$/hd		Total Head			
		Weight (lbs)	Head	low - high	Weight (lbs)	Head	low - high	Weight (lbs)	Head	low - high	low - high	low - high				
13-Sep-21	Beaver Hill www.beaverhillauctions.com	0-54: wool	-	1.90 - 2.34	70-85: wool	-	1.80 - 2.35	86-105:wool	-	1.80 - 2.30	Ewes: wool	0.80 - 1.70	1422			
		0-54: hair	-	1.60 - 1.85				86-105:hair			-	1.80 - 2.15		Ewes: hair	0.80 - 1.70	
		55-69: wool	-	1.90 - 2.41				106+:wool			-	1.90 2.30		Rams: wool	1.36 - 1.87	
		55-69: hair	-	1.80 - 2.07	70-85: hair	-	1.80 - 2.13	106+:hair	-	1.80 2.05	Rams: hair	1.00 - 1.80		Bred Ewes	0.00 - 0.00	
			-												Ewe&Lamb(s)	0.00 - 0.00
			-													
No sale this week	VJV Westlock www.vjvauction.com	0-69: wool	-	- - -	70-85: wool	-	- - -	86-105: wool	-	- - -	Ewes: wool	- - -	-			
			-					86-105: hair			-	- - -		Ewes: hair	- - -	
			-					106+: wool			-	- - -		Rams: wool	- - -	
		0-69: hair	-	- - -	70-85: hair	-	- - -	106+: hair	-	- - -	Rams: hair	- - -		Bred Ewes:wool	- - -	
			-												Ewe&Lamb:hair	- - -
			-													
information unavailable	Olds Auction www.oldsauktion.com	30-50	-	- - -	70-80	-	- - -	90-100	-	- - -	Ewes	- - -	0 (incl.goats)			
		50-60	-	- - -				80-90			-	- - -		100-110	-	-
		60-70	-	-				110+	-	-	Bred Ewes	- - -				
Information unavailable	Picture Butte www.picturebutteauction.ca							Feeder	-	- - -	Slaughter Ewes	- - -	-			
								Slaughter	-	- - -	Feeder Ewes	- - -				
											Ewe&lamb(s)	- - -				
											Bred ewes	- - -				
											Rams	-				

Ontario Live Animal Markets

13-Sep-21	OSI www.ontariosheep.org	0-50	43	2.25 - 2.60	65-80	216	2.20 - 2.98	95-110	143	2.15 - 2.35	Sheep	1.53 - 2.33	1268
		50-64	141	2.4 - 3.11	80-95	252	2.20 - 2.41	110+	29	2.06 - 2.30			
14-Sep-21	OLEX www.ontariosheep.org	0-50	29	3.23 - 4.00	65-79	384	2.48 - 3.20	95-109	744	2.10 - 2.28	Sheep	1.48 - 2.00	2270
		50-64	276	2.85 - 3.30	80-94	429	2.20 - 2.45	110+	189	1.99 - 2.23			
13-Sep-21	Embrun www.ontariosheep.org	0-50	34	1.05 - 2.00	65-79	113	1.8 - 2.50	95-109	16	1.65 - 1.86	Sheep	1.67 - 1.85	374
		50-64	76	1.75 - 2.40	80-94	76	1.75 - 2.30	110+	40	1.5 - 1.77			
9-Sep-21	Brussels www.ontariosheep.org	0-50	24	2.375 - 2.78	65-79	84	2.4 - 2.73	95-109	183	2.1 - 2.30	Sheep	1.75 - 2.10	526
		50-64	11	2.5 - 2.65	80-94	78	2.25 - 2.54	110+	37	2 - 2.14			

Alberta Lamb Producers does not endorse individual markets or verify prices provided.

Trends* in auction price for heavy lambs in Alberta



*Due to differences among auctions, prices are reported as 'trends' rather than averages.
 This graph is updated on weeks with two or more markets reporting prices.