

Alberta Live Animal Markets: Visit individual market websites for more information about applicable auction fees and upcoming sales

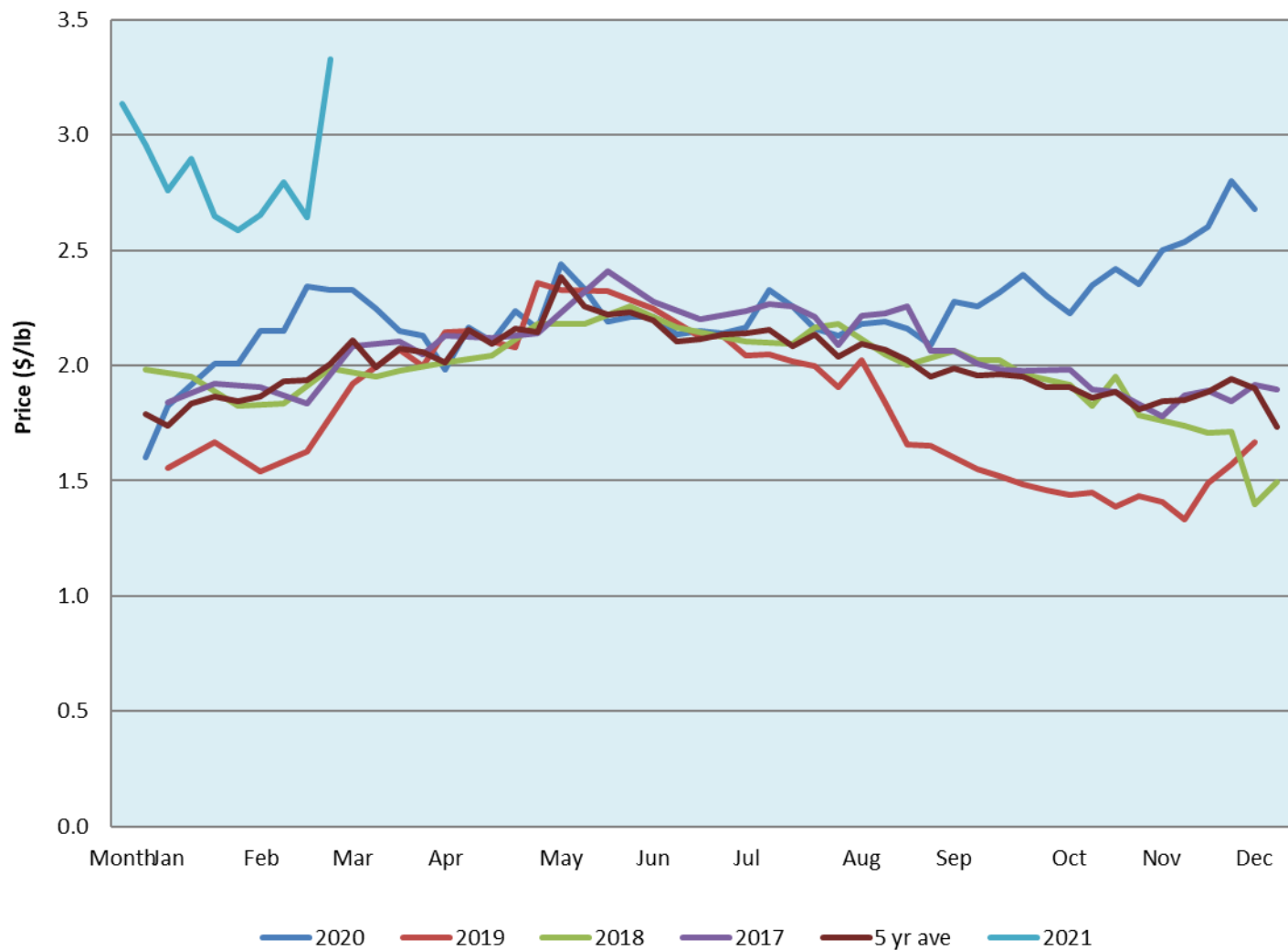
Date	Sale	Lambs (\$/lb)		Lambs (\$/lb)		Lambs (\$/lb)		Sheep(\$/lb): Bred ewes \$/hd		Head
		Weight (lbs)	low - high	Weight (lbs)	low - high	Weight (lbs)	low - high		low - high	
No sale this week	Beaver Hill www.beaverhillauctions.com	0-54: wool	- - -	70-85: wool	- - -	86-105:wool	- - -	Ewes: wool	- - -	-
		0-54: hair	- - -			86-105:hair	- - -	Ewes: hair	- - -	
		55-69: wool	- - -			106+:wool	- - -	Rams: wool	- - -	
		55-69: hair	- - -	70-85: hair	- - -			Rams: hair	- - -	
								Bred Ewes	- - -	
106+:hair	- - -	Ewe&Lamb(s)	- - -							
16-Mar-21	VJV Westlock www.vjvauction.com	0-69: wool	3.20 - 3.90	70-85: wool	3.00 - 3.60	86-105: wool	2.80 - 3.10	Ewes: wool	1.40 - 1.85	140
						86-105: hair	- - -	Rams: wool	1.50 - 1.68	
		0-69: hair	- - -	70-85: hair	- - -	106+: wool	2.00 - 2.55	Rams: hair	- - -	
						Bred Ewes:wool	250 - 375			
						106+: hair	- - -	Ewe&Lamb:hair	- - -	
16-Mar-21	Olds Auction www.oldsauction.com	30-50	3.75 - 4.02	70-80	3.61 - 3.85	90-100	3.11 - 3.59	Ewes	1.66 - 2.54	222 <small>(incl.goats)</small>
		50-60	3.75 - 3.91	80-90	3.60 - 3.93	100-110	3.11 - 3.55	Rams	2.41 - 2.54	
		60-70	3.73 - 3.84			110+	3.11 - 3.55	Bred Ewes	- - -	
Information unavailable	Picture Butte www.picturebutteauction.ca					Feeder	- - -	Slaughter Ewes	- - -	-
						Slaughter	- - -	Feeder Ewes	- - -	
								Ewe&lamb(s)	- - -	
								Bred ewes	- - -	
								Rams	- - -	

Ontario Live Animal Markets

15-Mar-21	OSI www.ontariosheep.org	0-50	3.90 - 4.70	65-80	3.75 - 4.45	95-110	3.08 - 3.28	Sheep	1.45 - 2.50	1227
		50-64	4.20 - 4.85	80-95	3.08 - 3.70	110+	3.09 - 3.30			
16-Mar-21	OLEX www.ontariosheep.org	0-50	4.90 - 6.10	65-79	3.85 - 4.53	95-109	3.35 - 3.50	Sheep	1.25 - 2.10	2611
		50-64	4.63 - 5.10	80-94	3.43 - 3.80	110+	3.25 - 3.49			
15-Mar-21	Embrun www.ontariosheep.org	0-50	3.00 - 5.60	65-79	4.15 - 4.40	95-109	3.95 - 4.22	Sheep	1.45 - 2.35	210
		50-64	4.35 - 5.30	80-94	4.30 - 4.40	110+	1.92 - 4.00			
11-Mar-21	Brussels www.ontariosheep.org	0-50	4.35 - 5.00	65-79	3.99 - 4.45	95-109	3.30 - 3.41	Sheep	1.40 - 2.20	438
		50-64	4.53 - 4.83	80-94	3.36 - 3.80	110+	3.20 - 3.24			

Alberta Lamb Producers does not endorse individual markets or verify prices provided.

Trends* in auction price for heavy lambs in Alberta



*Due to differences among auctions, prices are reported as 'trends' rather than averages.
 This graph is updated on weeks with two or more markets reporting prices.