

**Alberta Live Animal Markets: Visit individual market websites for more information about applicable auction fees and upcoming sales.**

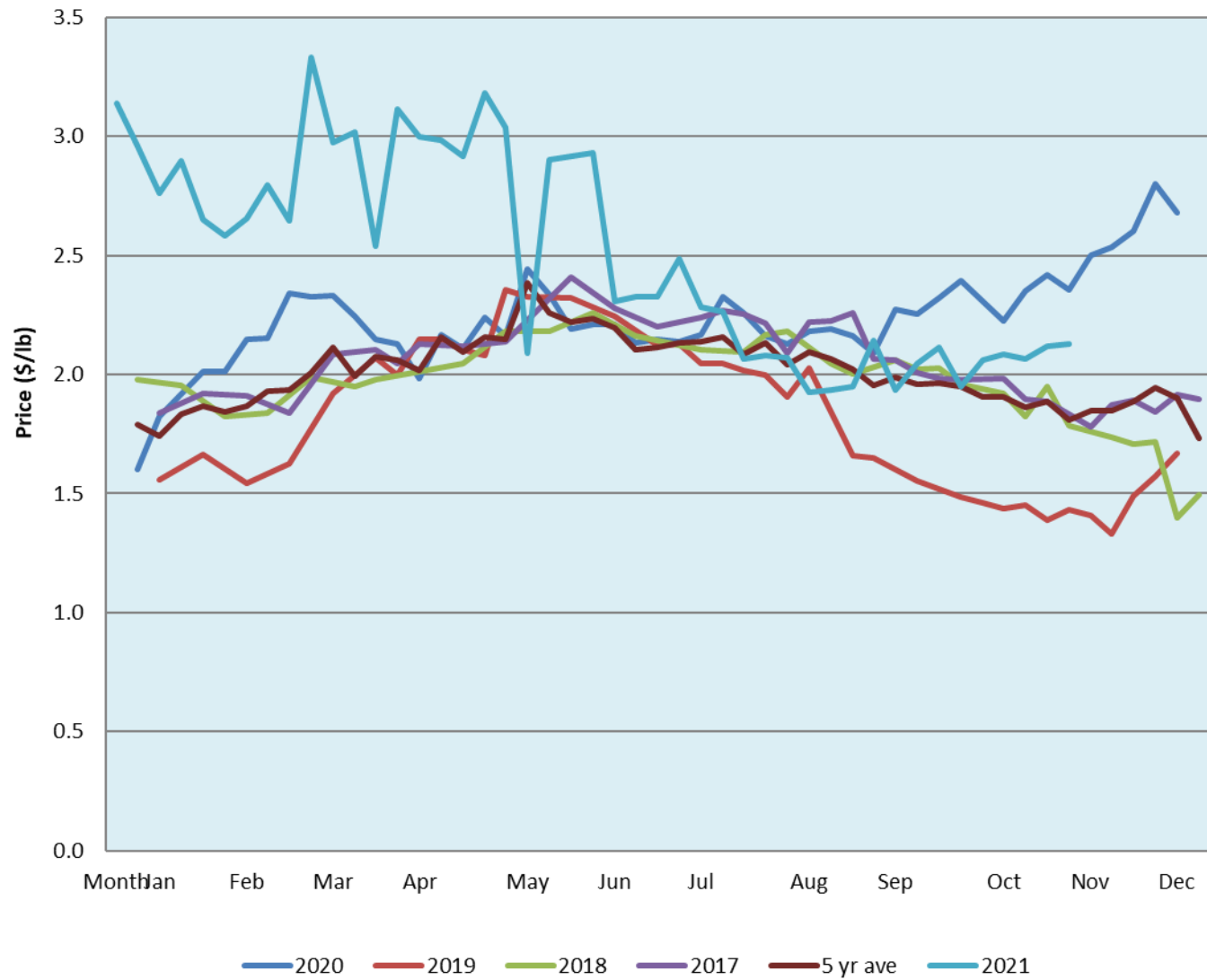
Date	Sale	Lambs (\$/lb)			Lambs (\$/lb)			Lambs (\$/lb)			Sheep(\$/lb): Bred ewes \$/hd		Total Head		
		Weight (lbs)	Head	low - high	Weight (lbs)	Head	low - high	Weight (lbs)	Head	low - high	low - high	low - high			
15-Nov-21	Beaver Hill <a href="http://www.beaverhillauctions.com">www.beaverhillauctions.com</a>	0-54: wool	-	2.30 - 2.65	70-85: wool	-	2.27 - 2.65	86-105:wool	-	2.10 - 2.56	Ewes: wool	1.25 - 2.00	995		
		0-54: hair	-	1.90 - 2.55				86-105:hair			-	1.95 - 2.30		Rams: wool	1.34 - 1.85
		55-69: wool	-	2.48 - 2.92				106+:wool			-	2.10 - 2.29		Rams: hair	1.65 - 1.95
		55-69: hair	-	2.40 - 2.76	70-85: hair	-	2.25 - 2.53	106+:hair	-	1.30 - 2.20	Bred Ewes	2.00 - 3.00			
											Ewe&Lamb(s)	- - -			
No sale this week	VJV Westlock <a href="http://www.vjvauction.com">www.vjvauction.com</a>	0-69: wool	-	- - -	70-85: wool	-	- - -	86-105: wool	-	- - -	Ewes: wool	- - -	-		
								86-105: hair	-	- - -	Ewes: hair	- - -			
									106+: wool	-	- - -	Rams: wool		- - -	
		0-69: hair	-	- - -	70-85: hair	-	- - -	106+: hair	-	- - -	Rams: hair	- - -			
											Bred Ewes:wool	- - -			
16-Nov-21	Olds Auction <a href="http://www.oldsauktion.com">www.oldsauktion.com</a>	30-50	-	1.86 - 2.11	70-80	-	2.3 - 2.46	90-100	-	2.24 - 2.31	Ewes	1.65 - 1.71	186  (incl.goats)		
		50-60	-	1.98 - 2.41	80-90	-	2.31 - 2.38	100-110	-	2.19 - 2.27	Rams	1.48 - 1.64			
		60-70	-	2.23 - 2.50				110+	-	2.19 - 2.27	Bred Ewes	- - -			
13-Nov-21	Picture Butte <a href="http://www.picturebutteauction.ca">www.picturebutteauction.ca</a>							Feeder	-	1.7 - 1.83	Slaughter Ewes	- - -	-		
								Slaughter	-	1.9 - 1.96	Feeder Ewes	- - -			
											Ewe&lamb(s)	- - -			
											Bred ewes	- - -			
										Rams	-				

**Ontario Live Animal Markets**

15-Nov-21	OSI <a href="http://www.ontariosheep.org">www.ontariosheep.org</a>	0-50	8	1.50 - 3.60	65-80	65	2.99 - 3.70	95-110	201	2.46 - 2.71	Sheep	1.60 - 2.00	959
		50-64	83	2.85 - 3.85	80-95	173	2.52 - 2.71	110+	27	2.16 - 2.54			
16-Nov-21	OLEX <a href="http://www.ontariosheep.org">www.ontariosheep.org</a>	0-50	77	3.70 - 4.50	65-79	395	3.18 - 3.63	95-109	630	2.51 - 2.68	Sheep	1.65 - 2.25	2632
		50-64	311	3.30 - 4.00	80-94	523	2.75 - 3.15	110+	269	2.43 - 2.65			
15-Nov-21	Embrun <a href="http://www.ontariosheep.org">www.ontariosheep.org</a>	0-50	20	1.25 - 2.85	65-79	107	2.75 - 3.12	95-109	63	2.3 - 2.60	Sheep	1.55 - 2.30	446
		50-64	35	1.45 - 3.30	80-94	156	2.37 - 2.85	110+	45	2.32 - 2.40			
11-Nov-21	Brussels <a href="http://www.ontariosheep.org">www.ontariosheep.org</a>	0-50	10	3.5 - 3.95	65-79	42	2.89 - 3.68	95-109	49	2.4 - 2.70	Sheep	1.75 - 2.58	286
		50-64	13	3.4 - 3.70	80-94	109	2.56 - 2.79	110+	46	2.2 - 2.48			

**Alberta Lamb Producers does not endorse individual markets or verify prices provided.**

### Trends\* in auction price for heavy lambs in Alberta



\*Due to differences among auctions, prices are reported as 'trends' rather than averages.  
This graph is updated on weeks with two or more markets reporting prices.