

Alberta Live Animal Markets: Visit individual market websites for more information about applicable auction fees and upcoming sales.

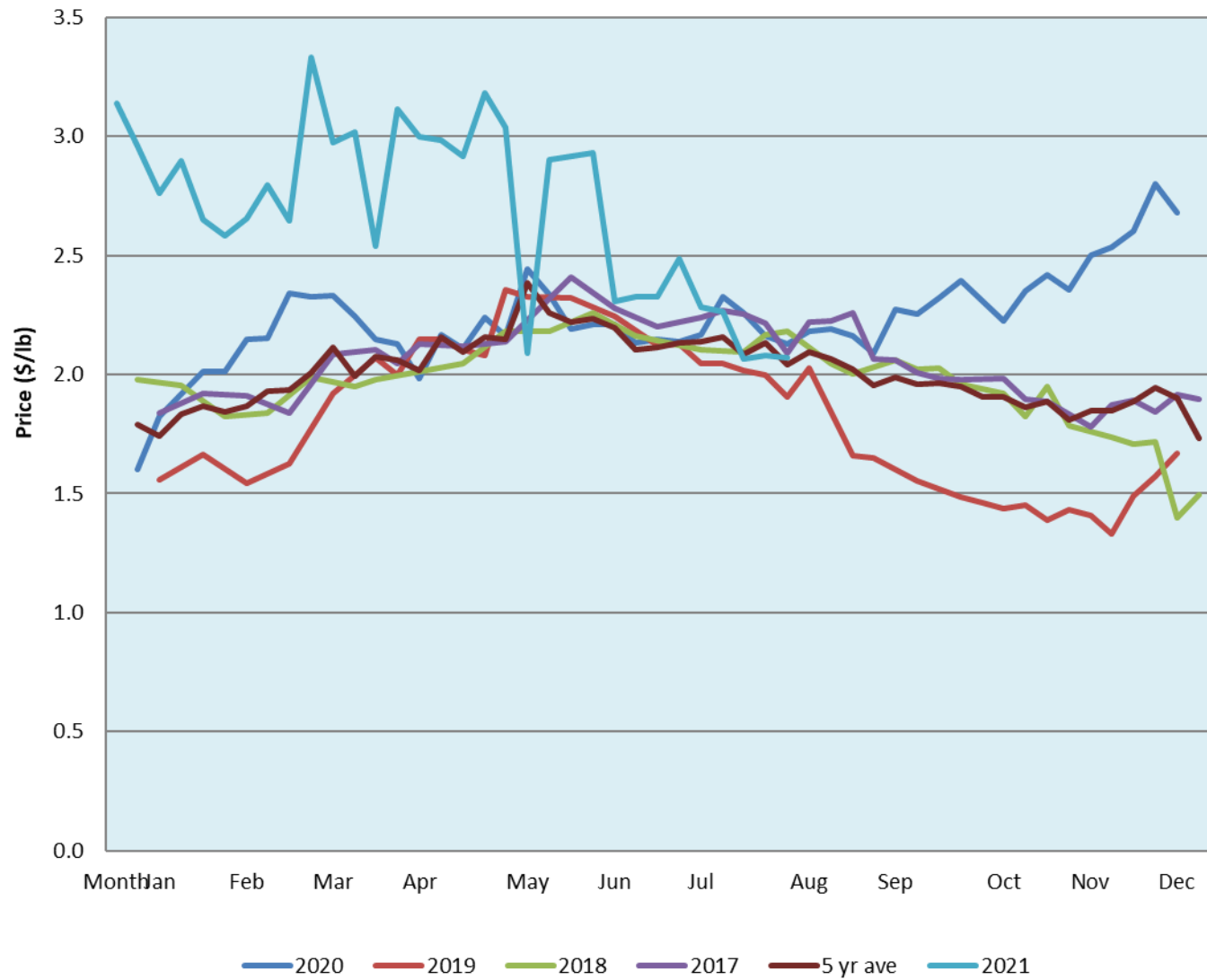
Date	Sale	Lambs (\$/lb)			Lambs (\$/lb)			Lambs (\$/lb)			Sheep(\$/lb): Bred ewes \$/hd		Total Head	
		Weight (lbs)	Head	low - high	Weight (lbs)	Head	low - high	Weight (lbs)	Head	low - high	low - high			
16-Aug-21	Beaver Hill www.beaverhillauctions.com	0-54: wool	-	1.95 - 2.48	70-85: wool	-	1.95 - 2.26	86-105:wool	-	2.00 - 2.22	Ewes: wool	1.20 - 1.65	1184	
		0-54: hair	-	1.30 - 1.75				86-105:hair	-	1.80 - 2.20	Rams: wool	1.15 - 1.41		
		55-69: wool	-	2.00 - 2.29				106+:wool	-	2 - 2.21	Rams: hair	1.35 - 1.75		
		55-69: hair	-	1.70 - 1.90	70-85: hair	-	1.70 - 1.90	106+:hair	-	1.8 - 2.15	Bred Ewes	0.00 - 0.00		
											Ewe&Lamb(s)	0 - 0		
Information unavailable	VJV Westlock www.vjvauction.com	0-69: wool	-	- - -	70-85: wool	-	- - -	86-105: wool	-	- - -	Ewes: wool	- - -	-	
			-					86-105: hair	-	- - -	Ewes: hair	- - -		
			-						106+: wool	-	- - -	Rams: wool		- - -
		0-69: hair	-	- - -	70-85: hair	-	- - -	106+: hair	-	- - -	Rams: hair	- - -		
			-								Bred Ewes:wool	- - -		
			-								Ewe&Lamb:hair	- - -		
information unavailable	Olds Auction www.oldsauktion.com	30-50	-	- - -	70-80	-	- - -	90-100	-	- - -	Ewes	- - -	0 (incl.goats)	
		50-60	-	- - -	80-90	-	- - -	100-110	-	-	Rams	- - -		
		60-70	-	-				110+	-	-	Bred Ewes	- - -		
14-Aug-21	Picture Butte www.picturebutteauction.ca							Feeder	-	2.22 - 2.38	Slaughter Ewes	0.89 - 1.18	-	
								Slaughter	-	1.96 - 2.12	Feeder Ewes	- - -		
											Ewe&lamb(s)	- - -		
											Bred ewes	- - -		
											Rams	- - -		

Ontario Live Animal Markets

16-Aug-21	OSI www.ontariosheep.org	0-50	67	2.75 - 3.45	65-80	297	2.17 - 2.44	95-110	146	1.94 - 2.11	Sheep	1.55 - 2.23	1291
		50-64	56	2.55 - 2.95	80-95	348	2.00 - 2.25	110+	17	1.9 - 2.00			
17-Aug-21	OLEX www.ontariosheep.org	0-50	47	2.88 - 3.55	65-79	273	2.48 - 2.98	95-109	550	2.00 - 2.19	Sheep	1.10 - 2.03	2067
		50-64	158	2.60 - 3.15	80-94	455	2.05 - 2.50	110+	186	1.88 - 2.10			
16-Aug-21	Embrun www.ontariosheep.org	0-50	0	0.00 - 0.00	65-79	112	2.9 - 3.15	95-109	23	2.72 - 3.02	Sheep	1.05 - 1.80	289
		50-64	23	2.68 - 3.00	80-94	90	2.64 - 3.10	110+	3	3 - 3.00			
12-Aug-21	Brussels www.ontariosheep.org	0-50	2	2.225 - 2.23	65-79	129	2.375 - 2.80	95-109	106	2.02 - 2.09	Sheep	1.65 - 2.06	563
		50-64	39	2.575 - 3.15	80-94	142	2 - 2.46	110+	2	1.9 - 2.09			

Alberta Lamb Producers does not endorse individual markets or verify prices provided.

Trends* in auction price for heavy lambs in Alberta



*Due to differences among auctions, prices are reported as 'trends' rather than averages.
 This graph is updated on weeks with two or more markets reporting prices.