

Alberta Live Animal Markets: Visit individual market websites for more information about applicable auction fees and upcoming sales.

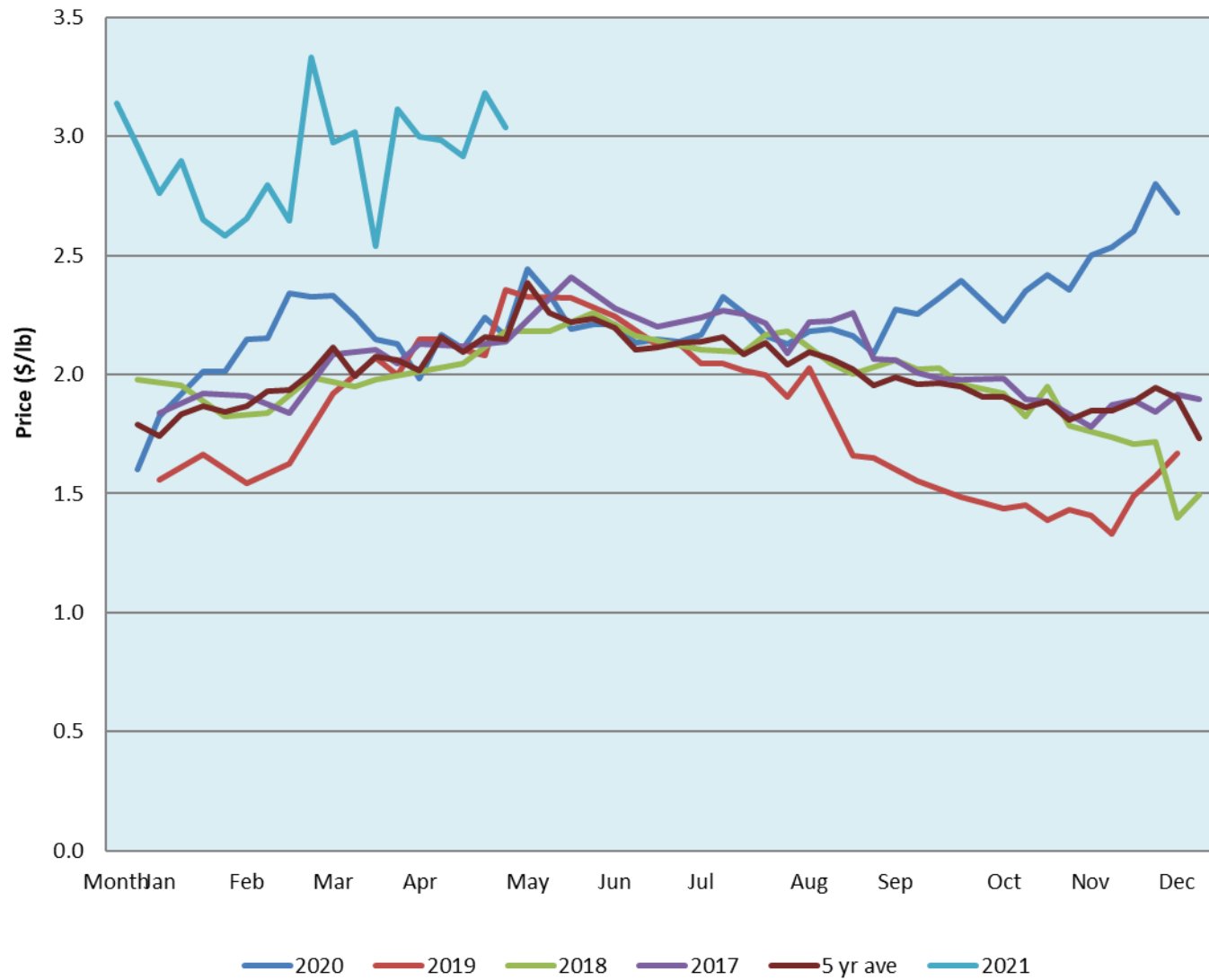
Date	Sale	Lambs (\$/lb)		Lambs (\$/lb)		Lambs (\$/lb)		Sheep(\$/lb): Bred ewes \$/hd		Head
		Weight (lbs)	low - high	Weight (lbs)	low - high	Weight (lbs)	low - high		low - high	
17-May-21	Beaver Hill www.beaverhillauctions.com	0-54: wool	3.65 - 4.00	70-85: wool	3.45 - 3.80	86-105:wool	3.00 - 3.52	Ewes: wool	1.50 - 2.82	767
		0-54: hair	3.00 - 3.60			86-105:hair	2.90 - 3.35	Ewes: hair	1.13 - 3.40	
		55-69: wool	3.60 - 4.30	70-85: hair	3.40 - 3.70	106+:wool	2.80 - 3.15	Rams: wool	1.45 - 2.45	
		55-69: hair	3.50 - 3.85			106+:hair	2.70 - 3.05	Rams: hair	1.70 - 2.80	
								Bred Ewes	3.70 - 5.30	
						Ewe&Lamb(s)	4 - 5			
18-May-21	VJV Westlock www.vjvauction.com	0-69: wool	3.67 - 4.00	70-85: wool	3.14 - 3.25	86-105: wool	3.00 - 3.14	Ewes: wool	1.27 - 1.82	253
						86-105: hair	- - -	Ewes: hair	- - -	
		0-69: hair	- - -	70-85: hair	- - -	106+: wool	2.40 - 3.10	Rams: wool	1.27 - 1.65	
						106+: hair	- - -	Rams: hair	- - -	
								Bred Ewes:wool	300 - 350	
18-May-21	Olds Auction www.oldsaction.com	30-50	3.60 - 4.00	70-80	3.76 - 3.80	90-100	2.91 - 3.21	Ewes	1.81 - 2.37	267 (incl.goats)
		50-60	3.68 - 3.96	80-90	2.95 - 3.43	100-110	3.07 - 3.15	Rams	1.42 - 1.77	
		60-70	3.90 - 4.04			110+	3.07 - 3.13	Bred Ewes	- - -	
Information unavailable	Picture Butte www.picturebutteauction.ca					Feeder	- - -	Slaughter Ewes	1.10 - 1.38	-
						Slaughter	- - -	Feeder Ewes	1.28 - 1.78	
								Ewe&lamb(s)	- - -	
								Bred ewes	- - -	
								Rams	- - -	

Ontario Live Animal Markets

17-May-21	OSI www.ontariosheep.org	0-50	2.60 - 4.55	65-80	4.03 - 4.30	95-110	3.50 - 3.85	Sheep	1.69 - 3.15	928
		50-64	4.35 - 4.53	80-95	3.60 - 3.98	110+	3.75 - 3.75			
18-May-21	OLEX www.ontariosheep.org	0-50	3.50 - 5.80	65-79	3.75 - 4.07	95-109	3.60 - 3.75	Sheep	0.50 - 2.00	2437
		50-64	3.70 - 4.25	80-94	3.53 - 3.80	110+	3.50 - 3.76			
17-May-21	Embrun www.ontariosheep.org	0-50	3.70 - 3.70	65-79	3.70 - 3.82	95-109	3.50 - 3.80	Sheep	1.75 - 2.70	239
		50-64	3.60 - 3.95	80-94	3.67 - 3.86	110+	0.00 - 0.00			
13-May-21	Brussels www.ontariosheep.org	0-50	4.35 - 4.60	65-79	3.83 - 3.99	95-109	3.88 - 3.94	Sheep	0.62 - 2.10	482
		50-64	3.96 - 4.43	80-94	3.84 - 3.98	110+	3.91 - 3.91			

Alberta Lamb Producers does not endorse individual markets or verify prices provided.

Trends* in auction price for heavy lambs in Alberta



*Due to differences among auctions, prices are reported as 'trends' rather than averages.
 This graph is updated on weeks with two or more markets reporting prices.