

**Alberta Live Animal Markets: Visit individual market websites for more information about applicable auction fees and upcoming sales**

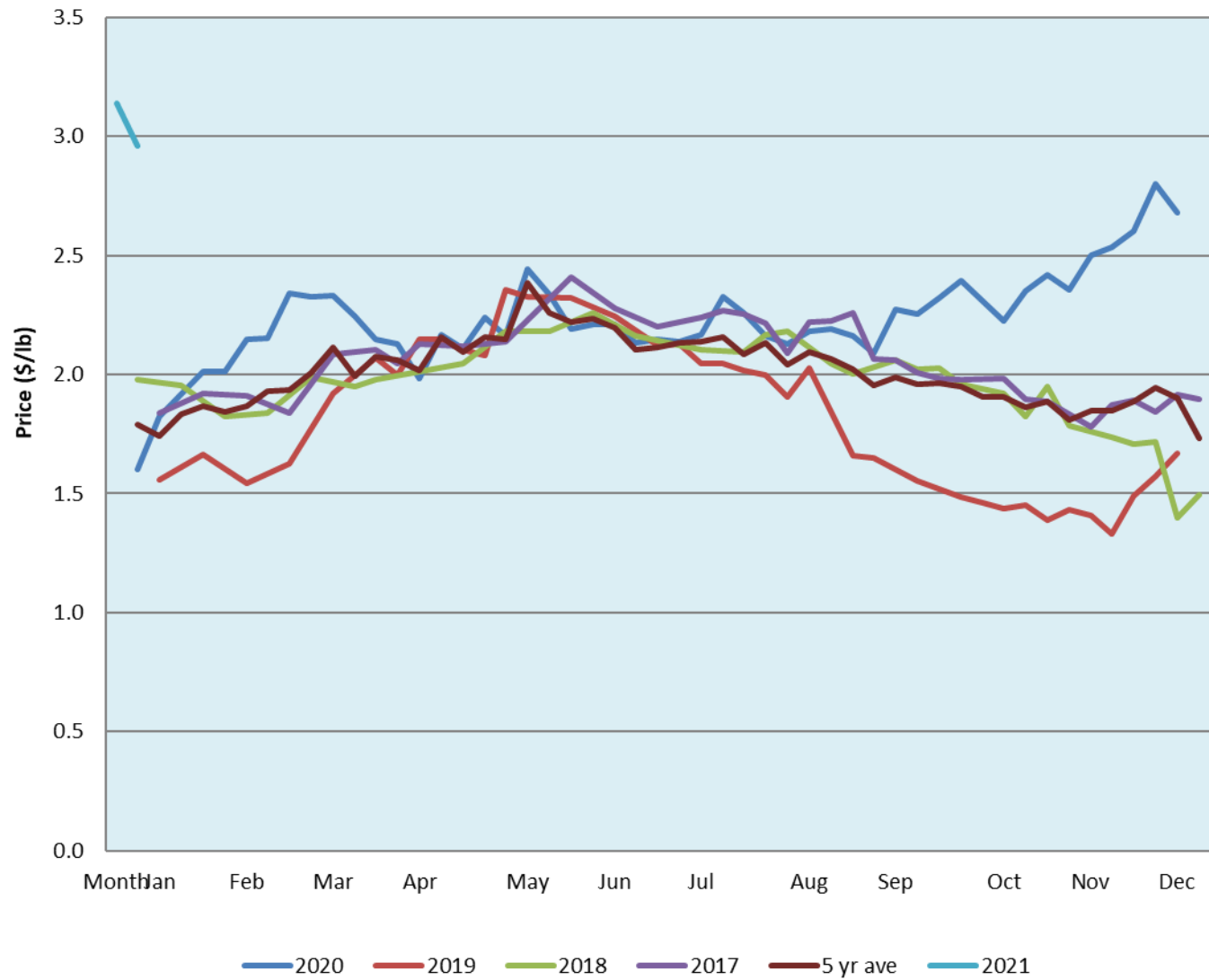
Date	Sale	Lambs (\$/lb)		Lambs (\$/lb)		Lambs (\$/lb)		Sheep(\$/lb): Bred ewes \$/hd		Head
		Weight (lbs)	low - high	Weight (lbs)	low - high	Weight (lbs)	low - high		low - high	
No sale this week	Beaver Hill <a href="http://www.beaverhillauctions.com">www.beaverhillauctions.com</a>	0-54: wool	- - -	70-85: wool	- - -	86-105:wool	- - -	Ewes: wool	- - -	-
		0-54: hair	- - -			86-105:hair	- - -	Ewes: hair	- - -	
		55-69: wool	- - -	70-85: hair	- - -	106+:wool	- - -	Rams: wool	- - -	
		55-69: hair	- - -			106+:hair	- - -	Rams: hair	- - -	
								Bred Ewes	- - -	
						Ewe&Lamb(s)	- - -			
19-Jan-21	VJV Westlock <a href="http://www.vjvauction.com">www.vjvauction.com</a>	0-69: wool	3.00 - 4.40	70-85: wool	3.20 - 4.40	86-105: wool	2.60 - 3.90	Ewes: wool	2.00 - 2.90	278
						86-105: hair	2.60 - 3.90	Ewes: hair	2.00 - 2.90	
		0-69: hair	3.00 - 4.40	70-85: hair	3.20 - 4.40	106+: wool	3.32 - 3.52	Rams: wool	2.20 - 2.90	
						106+: hair	3.32 - 3.52	Rams: hair	2.20 - 2.90	
								Bred Ewes:wool	400 - 400	
						Ewe&Lamb:hair	- - -			
19-Jan-21	Olds Auction <a href="http://www.oldsauction.com">www.oldsauction.com</a>	30-50	3.00 - 3.47	70-80	3.70 - 3.97	90-100	3.00 - 3.33	Ewes	2.08 - 2.64	119  (incl.goats)
		50-60	3.08 - 3.51	80-90	3.10 - 3.44	100-110	3.00 - 3.16	Rams	2.50 - 2.70	
		60-70	3.66 - 3.92			110+	2.50 - 2.76	Bred Ewes	- - -	
16-Jan-21	Picture Butte <a href="http://www.picturebutteauction.ca">www.picturebutteauction.ca</a>					Feeder	2.89 - 3.60	Slaughter Ewes	1.40 - 1.79	-
						Slaughter	2.81 - 2.87	Feeder Ewes	- - -	
								Ewe&lamb(s)	- - -	
								Bred ewes	- - -	
								Rams	- - -	

**Ontario Live Animal Markets**

18-Jan-21	OSI <a href="http://www.ontariosheep.org">www.ontariosheep.org</a>	0-50	3.35 - 4.15	65-80	3.93 - 4.20	95-110	3.33 - 3.47	Sheep	2.70 - 3.35	683
		50-64	3.90 - 4.50	80-95	3.50 - 3.75	110+	2.93 - 3.00			
19-Jan-21	OLEX <a href="http://www.ontariosheep.org">www.ontariosheep.org</a>	0-50	4.23 - 5.35	65-79	3.58 - 4.00	95-109	3.25 - 3.39	Sheep	2.15 - 2.75	1857
		50-64	4.00 - 4.70	80-94	3.35 - 3.64	110+	3.10 - 3.34			
18-Jan-21	Embrun <a href="http://www.ontariosheep.org">www.ontariosheep.org</a>	0-50	3.60 - 5.40	65-79	3.60 - 4.05	95-109	3.15 - 3.85	Sheep	2.30 - 2.70	380
		50-64	3.80 - 4.50	80-94	3.30 - 3.90	110+	2.70 - 3.80			
14-Jan-21	Brussels <a href="http://www.ontariosheep.org">www.ontariosheep.org</a>	0-50	3.88 - 4.20	65-79	3.93 - 4.20	95-109	3.18 - 3.24	Sheep	2.50 - 3.20	302
		50-64	3.15 - 4.35	80-94	3.22 - 3.70	110+	2.75 - 2.85			

**Alberta Lamb Producers does not endorse individual markets or verify prices provided.**

### Trends\* in auction price for heavy lambs in Alberta



\*Due to differences among auctions, prices are reported as 'trends' rather than averages.  
 This graph is updated on weeks with two or more markets reporting prices.