

**Alberta Live Animal Markets: Visit individual market websites for more information about applicable auction fees and upcoming sales.**

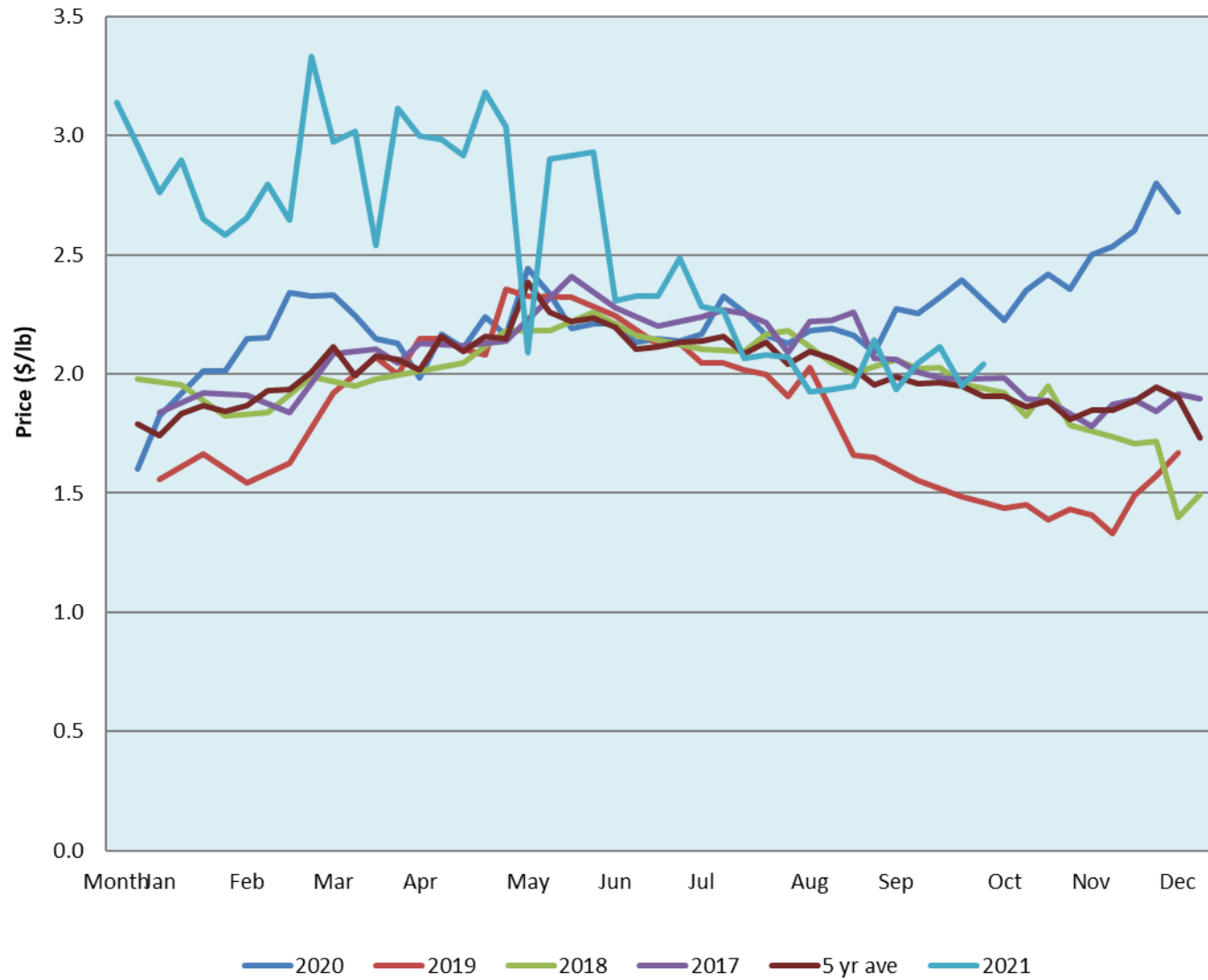
Date	Sale	Lambs (\$/lb)			Lambs (\$/lb)			Lambs (\$/lb)			Sheep(\$/lb): Bred ewes \$/hd		Total Head		
		Weight (lbs)	Head	low - high	Weight (lbs)	Head	low - high	Weight (lbs)	Head	low - high	low - high				
18-Oct-21	Beaver Hill <a href="http://www.beaverhillauctions.com">www.beaverhillauctions.com</a>	0-54: wool	-	1.90 - 2.40	70-85: wool	-	1.75 - 2.17	86-105:wool	-	1.75 - 2.26	Ewes: wool	1.25 - 1.88	1927		
		0-54: hair	-	1.20 - 1.70				86-105:hair			-	1.75 - 2.00		Ewes: hair	1.10 - 1.60
		55-69: wool	-	2.00 - 2.56				106+:wool			-	1.9 - 2.24		Rams: wool	1.35 - 1.65
		55-69: hair	-	1.35 - 1.79	70-85: hair	-	1.65 - 1.95	106+:hair	-	1.8 - 2.05	Rams: hair	1.35 - 1.97		Bred Ewes	2.00 - 2.50
			-					Ewe&Lamb(s)		0.00 - 0.00					
			-												
Information unavailable	VJV Westlock <a href="http://www.vjvauction.com">www.vjvauction.com</a>	0-69: wool	-	- - -	70-85: wool	-	- - -	86-105: wool	-	- - -	Ewes: wool	- - -	-		
			-					86-105: hair			-	- - -		Ewes: hair	- - -
			-					106+: wool			-	- - -		Rams: wool	- - -
		0-69: hair	-	- - -	70-85: hair	-	- - -	106+: hair	-	- - -	Rams: hair	- - -		Bred Ewes:wool	- - -
			-					Ewe&Lamb:hair		- - -					
			-												
information unavailable	Olds Auction <a href="http://www.oldsauktion.com">www.oldsauktion.com</a>	30-50	-	0 - 0.00	70-80	-	0 - 0.00	90-100	-	0 - 0.00	Ewes	0.00 - 0.00	0 (incl.goats)		
		50-60	-	0 - 0.00				100-110			-	0 - 0.00		Rams	0.00 - 0.00
		60-70	-	0 - 0.00	80-90	-	0 - 0.00	110+	-	0 - 0.00	Bred Ewes	0 - 0			
16-Oct-21	Picture Butte <a href="http://www.picturebutteauction.ca">www.picturebutteauction.ca</a>							Feeder	-	1.65 - 1.89	Slaughter Ewes	0.89 - 1.22	-		
								Slaughter		-	1.93 - 2.05	Feeder Ewes		- - -	
												Ewe&lamb(s)		- - -	
												Bred ewes		- - -	
												Rams		-	

**Ontario Live Animal Markets**

18-Oct-21	OSI <a href="http://www.ontariosheep.org">www.ontariosheep.org</a>	0-50	29	2.25 - 3.25	65-80	203	2.36 - 2.65	95-110	99	2.08 - 2.20	Sheep	1.71 - 2.13	1165
		50-64	59	2.56 - 3.00	80-95	322	2.10 - 2.38	110+	2	2.06 - 2.06			
19-Oct-21	OLEX <a href="http://www.ontariosheep.org">www.ontariosheep.org</a>	0-50	45	2.25 - 3.25	65-79	405	2.28 - 2.90	95-109	699	1.85 - 2.00	Sheep	1.45 - 2.38	2531
		50-64	189	2.65 - 3.18	80-94	485	2.00 - 2.45	110+	264	1.90 - 2.03			
18-Oct-21	Embrun <a href="http://www.ontariosheep.org">www.ontariosheep.org</a>	0-50	3	3.25 - 3.45	65-79	147	2.6 - 2.90	95-109	66	2.12 - 2.52	Sheep	1.40 - 1.78	355
		50-64	19	2.57 - 2.85	80-94	64	2.6 - 2.85	110+	38	2 - 2.25			
14-Oct-21	Brussels <a href="http://www.ontariosheep.org">www.ontariosheep.org</a>	0-50	-	0 - 0.00	65-79	127	2.26 - 2.40	95-109	128	2.14 - 2.28	Sheep	1.80 - 2.10	513
		50-64	85	2.5 - 2.50	80-94	52	2.21 - 2.25	110+	16	2.11 - 2.12			

**Alberta Lamb Producers does not endorse individual markets or verify prices provided.**

### Trends\* in auction price for heavy lambs in Alberta



\*Due to differences among auctions, prices are reported as 'trends' rather than averages.  
 This graph is updated on weeks with two or more markets reporting prices.