

Alberta Live Animal Markets: Visit individual market websites for more information about applicable auction fees and upcoming sales.

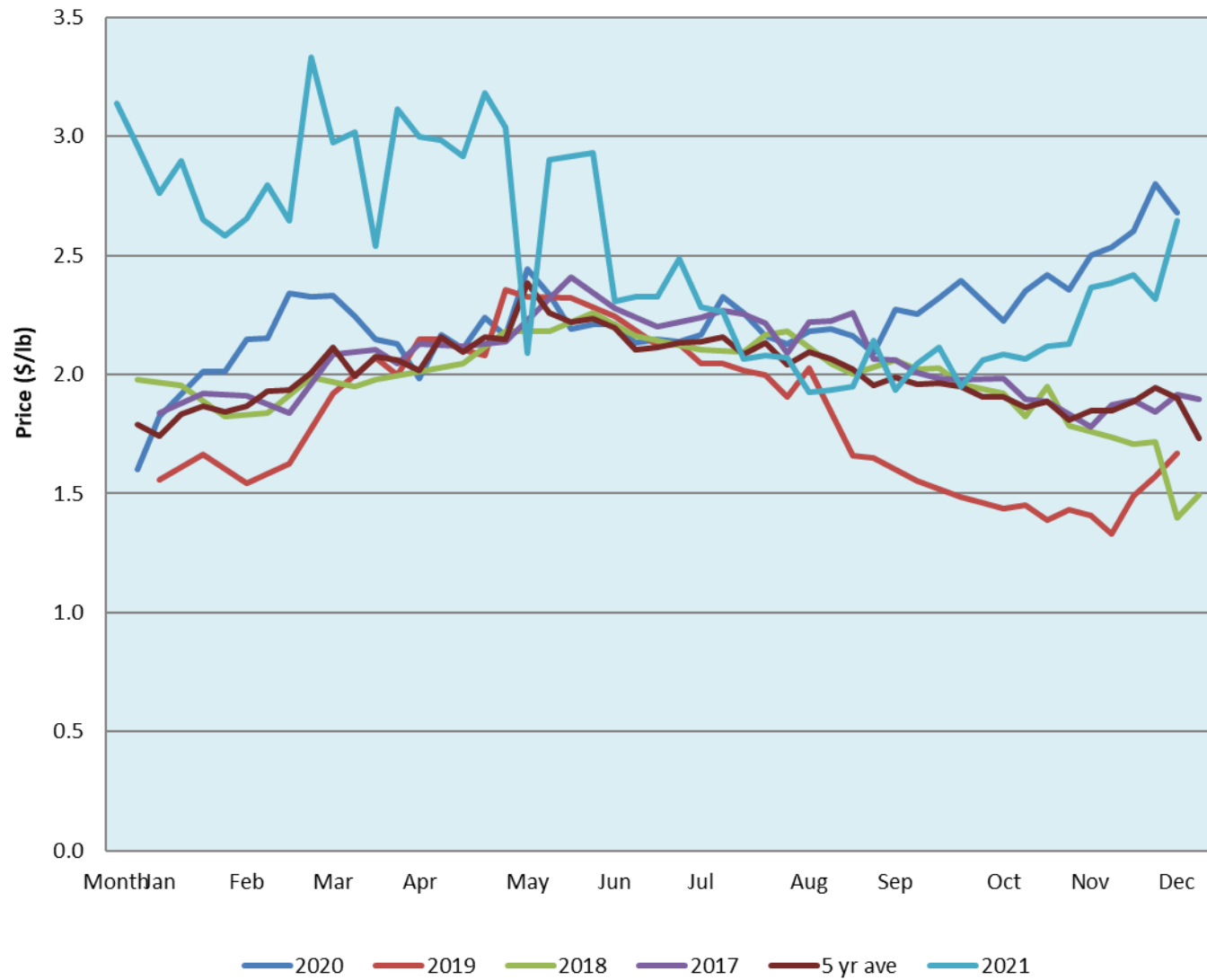
Date	Sale	Lambs (\$/lb)			Lambs (\$/lb)			Lambs (\$/lb)			Sheep(\$/lb): Bred ewes \$/hd		Total Head		
		Weight (lbs)	Head	low - high	Weight (lbs)	Head	low - high	Weight (lbs)	Head	low - high	low - high	low - high			
20-Dec-21	Beaver Hill www.beaverhillauctions.com	0-54: wool	-	2.90 - 3.65	70-85: wool	-	2.75 - 3.71	86-105:wool	-	2.55 - 3.30	Ewes: wool	1.60 - 2.35	1087		
		0-54: hair	-	2.40 - 3.25				86-105:hair			-	2.45 - 3.16		Ewes: hair	1.75 - 2.50
		55-69: wool	-	2.80 - 3.85				106+:wool			-	2.50 - 2.81		Rams: wool	2.02 - 2.45
		55-69: hair	-	2.40 - 3.64	70-85: hair	-	2.60 - 3.30	106+:hair	-	1.75 - 2.45	Rams: hair	2.05 - 2.40			
			-					Bred Ewes			3.10 - 3.90				
			-					Ewe&Lamb(s)			- - -				
No sale this week	VJV Westlock www.vjvauction.com	0-69: wool	-	- - -	70-85: wool	-	- - -	86-105: wool	-	- - -	Ewes: wool	- - -	-		
			-					86-105: hair			-	- - -		Ewes: hair	- - -
			-					106+: wool			-	- - -		Rams: wool	- - -
		0-69: hair	-	- - -	70-85: hair	-	- - -	106+: hair	-	- - -	Rams: hair	- - -			
			-					Bred Ewes:wool			- - -				
			-					Ewe&Lamb:hair			- - -				
21-Dec-21	Olds Auction www.oldsauktion.com	30-50	-	2 - 2.17	70-80	-	3.17 - 3.40	90-100	-	3.09 - 3.14	Ewes	1.80 - 1.87	85 (incl.goats)		
		50-60	-	2.55 - 3.33	80-90	-	2.92 - 2.96	100-110	-	3.07 - 3.14	Rams	2.00 - 2.27			
		60-70	-	3.21 - 3.42				110+	-	3.07 - 3.09	Bred Ewes	- - -			
18-Dec-21	Picture Butte www.picturebutteauction.ca							Feeder	-	2.1 - 2.29	Slaughter Ewes	1.18 - 1.51	-		
								Slaughter	-	2.16 - 2.23	Feeder Ewes	- - -			
											Ewe&lamb(s)	- - -			
											Bred ewes	- - -			
											Rams	-			

Ontario Live Animal Markets

20-Dec-21	OSI www.ontariosheep.org	0-50	37	2.50 - 4.10	65-80	451	3.05 - 3.63	95-110	143	3.025 - 3.25	Sheep	2.55 - 2.10	1543
		50-64	243	3.55 - 4.33	80-95	147	3.08 - 3.40	110+	15	2.8 - 2.94			
21-Dec-21	OLEX www.ontariosheep.org	0-50	148	4.60 - 5.20	65-79	670	3.38 - 3.95	95-109	507	2.95 - 3.28	Sheep	2.45 - 3.38	3203
		50-64	533	3.88 - 4.90	80-94	590	3.33 - 3.60	110+	186	2.75 - 3.00			
20-Dec-21	Embrun www.ontariosheep.org	0-50	4	4.30 - 4.90	65-79	101	3.8 - 4.15	95-109	33	2.75 - 3.30	Sheep	2.45 - 3.02	296
		50-64	59	3.80 - 4.15	80-94	53	3.35 - 4.10	110+	17	2.85 - 3.15			
16-Dec-21	Brussels www.ontariosheep.org	0-50	87	4.25 - 5.13	65-79	140	3.425 - 4.16	95-109	106	3 - 3.41	Sheep	2.70 - 3.35	940
		50-64	252	3.95 - 4.73	80-94	137	2.9 - 3.41	110+	42	3.01 - 3.08			

Alberta Lamb Producers does not endorse individual markets or verify prices provided.

Trends* in auction price for heavy lambs in Alberta



*Due to differences among auctions, prices are reported as 'trends' rather than averages.
 This graph is updated on weeks with two or more markets reporting prices.