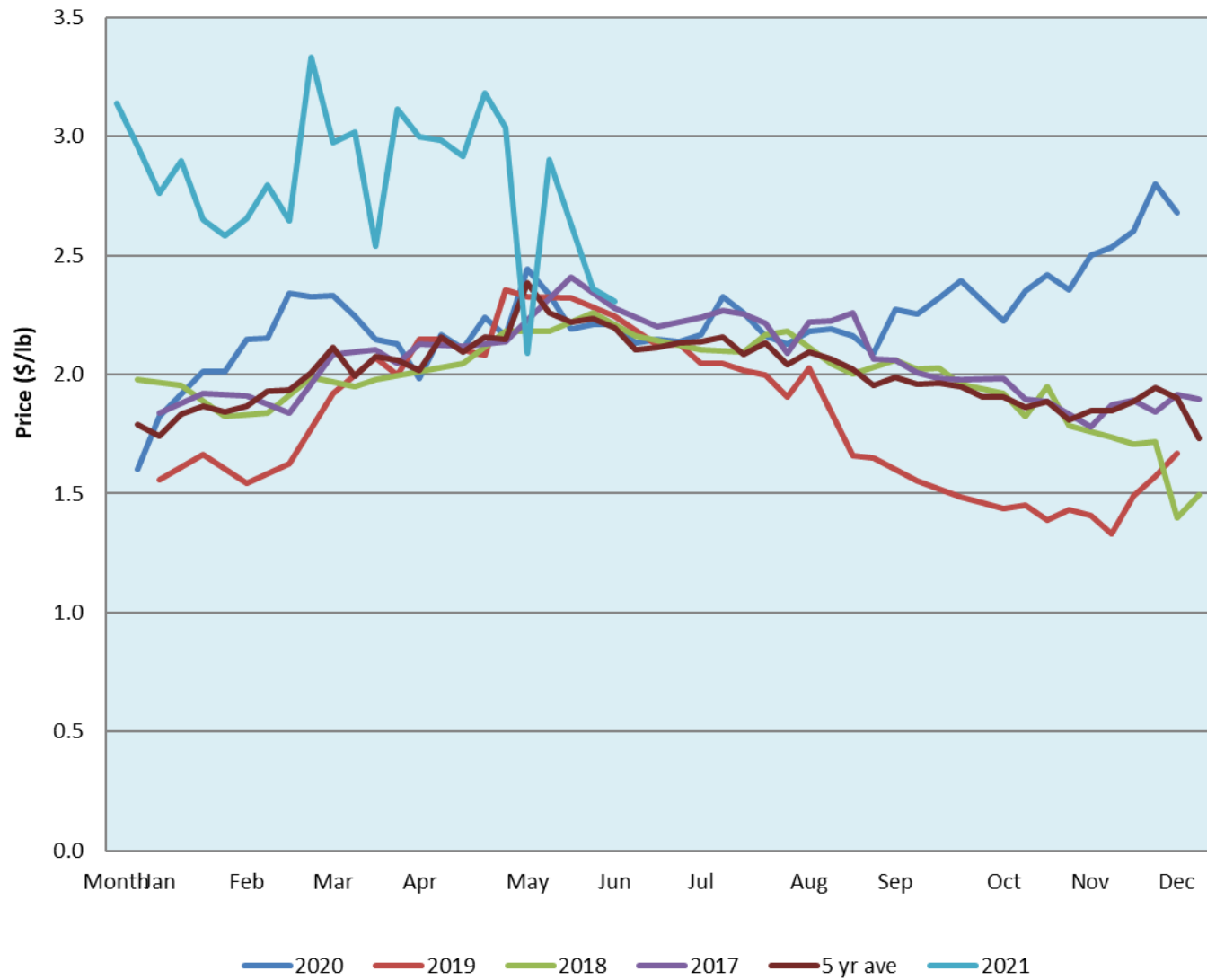


Alberta Live Animal Markets: Visit individual market websites for more information about applicable auction fees and upcoming sales										
Date	Sale	Lambs (\$/lb)		Lambs (\$/lb)		Lambs (\$/lb)		Sheep(\$/lb): Bred ewes \$/hd		Head
		Weight (lbs)	low - high	Weight (lbs)	low - high	Weight (lbs)	low - high		low - high	
21-Jun-21	Beaver Hill www.beaverhillauctions.com	0-54: wool	2.60 - 3.00	70-85: wool	2.40 - 2.65	86-105:wool	2.29 - 2.54	Ewes: wool	1.40 - 1.95	661
		0-54: hair	2.30 - 2.60			86-105:hair	2.20 - 2.45	Ewes: hair	1.30 - 2.10	
		55-69: wool	2.60 - 2.80	70-85: hair	2.30 - 2.50	106+:wool	2.30 - 2.39	Rams: wool	1.45 - 1.90	
		55-69: hair	2.30 - 2.60			106+:hair	2.15 - 2.25	Rams: hair	1.70 - 2.10	
								Bred Ewes	3.70 - 5.30	
						Ewe&Lamb(s)	4 - 5			
No sale this week	VJV Westlock www.vjvauction.com	0-69: wool	- - -	70-85: wool	- - -	86-105: wool	- - -	Ewes: wool	- - -	-
						86-105: hair	- - -	Ewes: hair	- - -	
		0-69: hair	- - -	70-85: hair	- - -	106+: wool	- - -	Rams: wool	- - -	
						106+: hair	- - -	Rams: hair	- - -	
								Bred Ewes:wool	- - -	
								Ewe&Lamb:hair	- - -	
22-Jun-21	Olds Auction www.oldsauction.com	30-50	2.10 - 2.27	70-80	2.42 - 2.88	90-100	2.36 - 2.58	Ewes	1.39 - 1.57	345
		50-60	2.45 - 2.57	80-90	2.38 - 2.61	100-110	2.30 - 2.41	Rams	1.00 - 1.63	
		60-70	2.43 - 2.63			110+	2.13 - 2.41	Bred Ewes	- - -	
Information unavailable	Picture Butte www.picturebutteauction.ca					Feeder	- - -	Slaughter Ewes	- - -	-
						Slaughter	- - -	Feeder Ewes	- - -	
								Ewe&lamb(s)	- - -	
								Bred ewes	- - -	
								Rams	- - -	
Ontario Live Animal Markets										
21-Jun-21	OSI www.ontariosheep.org	0-50	3.05 - 3.05	65-80	2.71 - 2.95	95-110	2.51 - 2.85	Sheep	1.65 - 2.68	609
		50-64	3.05 - 3.40	80-95	2.70 - 2.99	110+	2.50 - 2.90			
22-Jun-21	OLEX www.ontariosheep.org	0-50	3.00 - 4.15	65-79	2.63 - 3.20	95-109	2.38 - 2.48	Sheep	1.25 - 2.03	2272
		50-64	3.15 - 3.80	80-94	2.38 - 2.70	110+	2.38 - 2.40			
21-Jun-21	Embrun www.ontariosheep.org	0-50	3.10 - 3.10	65-79	2.80 - 3.15	95-109	2.95 - 3.40	Sheep	1.15 - 2.00	339
		50-64	2.82 - 3.25	80-94	2.84 - 3.15	110+	2.77 - 3.10			
17-Jun-21	Brussels www.ontariosheep.org	0-50	3.20 - 3.35	65-79	2.67 - 2.94	95-109	2.46 - 2.54	Sheep	1.53 - 2.19	384
		50-64	3.10 - 3.60	80-94	2.50 - 2.65	110+	2.02 - 2.48			
Alberta Lamb Producers does not endorse individual markets or verify prices provided.										

Trends* in auction price for heavy lambs in Alberta



*Due to differences among auctions, prices are reported as 'trends' rather than averages.
 This graph is updated on weeks with two or more markets reporting prices.