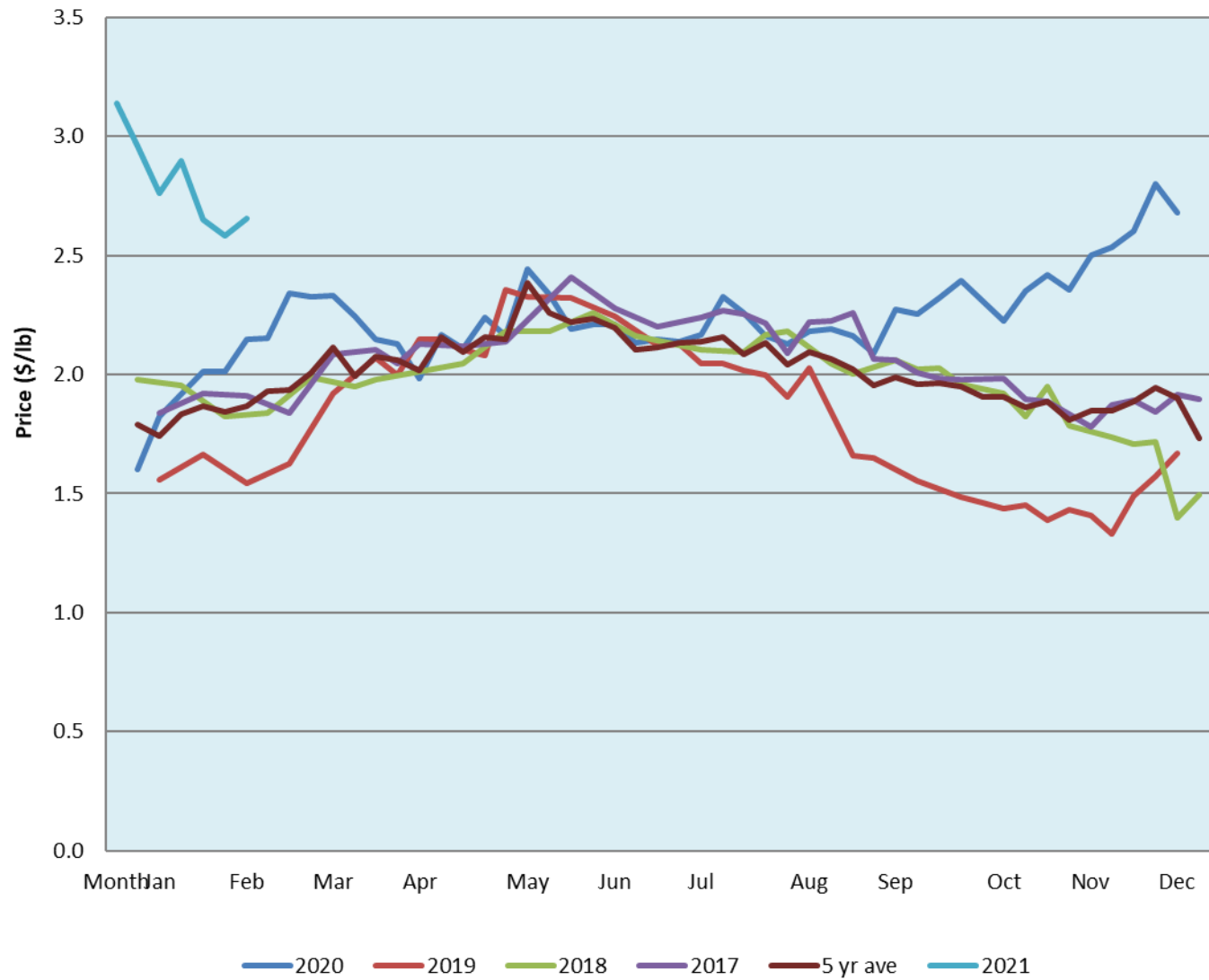


Alberta Live Animal Markets: Visit individual market websites for more information about applicable auction fees and upcoming sales										
Date	Sale	Lambs (\$/lb)		Lambs (\$/lb)		Lambs (\$/lb)		Sheep(\$/lb): Bred ewes \$/hd		Head
		Weight (lbs)	low - high	Weight (lbs)	low - high	Weight (lbs)	low - high		low - high	
22-Feb-21	Beaver Hill www.beaverhillauctions.com	0-54: wool	3.40 - 3.90	70-85: wool	3.30 - 3.90	86-105:wool	2.70 - 3.50	Ewes: wool	1.37 - 2.10	886
		0-54: hair	2.50 - 3.85			86-105:hair	2.70 - 3.30	Ewes: hair	1.50 - 2.50	
		55-69: wool	3.70 - 4.40	70-85: hair	3.20 - 3.70	106+:wool	2.30 - 2.65	Rams: wool	1.45 - 2.05	
		55-69: hair	3.70 - 4.25			Bred Ewes	3.10 - 4.20			
						106+:hair	2.20 - 2.50	Ewe&Lamb(s)	5 - 6	
No sale this week	VJV Westlock www.vjvauction.com	0-69: wool	- - -	70-85: wool	- - -	86-105: wool	- - -	Ewes: wool	- - -	
						86-105: hair	- - -	Ewes: hair	- - -	
		0-69: hair	- - -	70-85: hair	- - -	106+: wool	- - -	Rams: wool	- - -	
						106+: hair	- - -	Rams: hair	- - -	
								Bred Ewes:wool	- - -	
						Ewe&Lamb:hair	- - -			
23-Feb-21	Olds Auction www.oldsauction.com	30-50	2.96 - 3.08	70-80	2.60 - 2.91	90-100	2.46 - 2.55	Ewes	1.50 - 1.66	160 <small>(incl.goats)</small>
		50-60	2.77 - 3.58	80-90	2.73 - 2.84	100-110	2.44 - 2.55	Rams	1.64 - 2.06	
		60-70	2.70 - 3.33			110+	2.52 - 2.57	Bred Ewes	- - -	
20-Feb-21	Picture Butte www.picturebutteauction.ca					Feeder	3.00 - 3.60	Slaughter Ewes	- - -	-
						Slaughter	2.88 - 3.00	Feeder Ewes	- - -	
								Ewe&lamb(s)	- - -	
								Bred ewes	- - -	
								Rams	- - -	
Ontario Live Animal Markets										
22-Feb-21	OSI www.ontariosheep.org	0-50	4.50 - 4.50	65-80	3.78 - 4.09	95-110	3.25 - 3.35	Sheep	2.00 - 3.10	460
		50-64	3.70 - 4.33	80-95	3.55 - 3.90	110+	2.85 - 3.08			
23-Feb-21	OLEX www.ontariosheep.org	0-50	4.95 - 5.95	65-79	3.68 - 4.20	95-109	3.19 - 3.41	Sheep	1.80 - 2.65	1331
		50-64	4.35 - 4.95	80-94	3.23 - 3.65	110+	2.75 - 3.28			
22-Feb-21	Embrun www.ontariosheep.org	0-50	4.70 - 4.70	65-79	4.30 - 4.40	95-109	4.00 - 4.10	Sheep	2.30 - 3.10	109
		50-64	4.26 - 4.50	80-94	4.20 - 4.40	110+	3.30 - 3.50			
18-Feb-21	Brussels www.ontariosheep.org	0-50	0.00 - 0.00	65-79	4.06 - 4.25	95-109	3.30 - 3.37	Sheep	1.60 - 2.70	247
		50-64	4.37 - 4.40	80-94	3.46 - 3.96	110+	2.80 - 2.99			
Alberta Lamb Producers does not endorse individual markets or verify prices provided.										

Trends* in auction price for heavy lambs in Alberta



*Due to differences among auctions, prices are reported as 'trends' rather than averages.
 This graph is updated on weeks with two or more markets reporting prices.