

Alberta Live Animal Markets: Visit individual market websites for more information about applicable auction fees and upcoming sales.

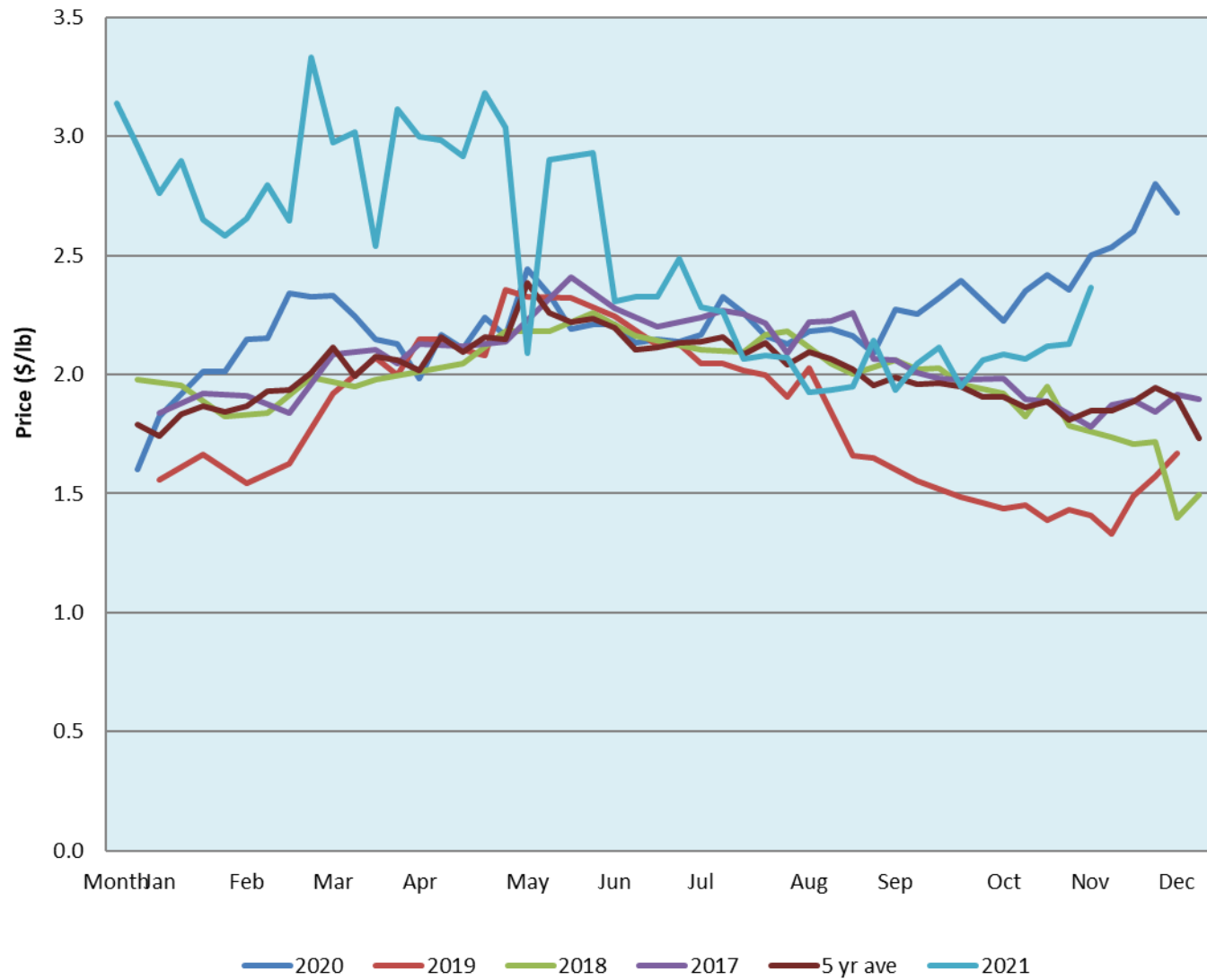
Date	Sale	Lambs (\$/lb)			Lambs (\$/lb)			Lambs (\$/lb)			Sheep(\$/lb): Bred ewes \$/hd		Total Head		
		Weight (lbs)	Head	low - high	Weight (lbs)	Head	low - high	Weight (lbs)	Head	low - high	low - high				
22-Nov-21	Beaver Hill www.beaverhillauctions.com	0-54: wool	-	3.10 - 3.80	70-85: wool	-	2.73 - 3.48	86-105:wool	-	2.20 - 2.85	Ewes: wool	1.35 - 2.30	1213		
		0-54: hair	-	2.70 - 3.25				86-105:hair			-	2.25 - 2.78		Ewes: hair	1.40 - 2.15
		55-69: wool	-	3.15 - 3.78				106+:wool			-	2.25 - 2.65		Rams: wool	1.47 - 2.00
		55-69: hair	-	2.90 - 3.26	70-85: hair	-	2.55 - 3.29	106+:hair	-	2.25 - 2.65	Rams: hair	2.00 - 2.25			
												Bred Ewes		2.30 - 3.90	
No sale this week	VJV Westlock www.vjvauction.com	0-69: wool	-	- - -	70-85: wool	-	- - -	86-105: wool	-	- - -	Ewes: wool	- - -	-		
								86-105: hair	-	- - -	Ewes: hair	- - -			
									106+: wool	-	- - -	Rams: wool		- - -	
		0-69: hair	-	- - -	70-85: hair	-	- - -	106+: hair	-	- - -	Rams: hair	- - -			
												Bred Ewes:wool		- - -	
23-Nov-21	Olds Auction www.oldsauktion.com	30-50	-	2 - 2.17	70-80	-	2.3 - 3.18	90-100	-	2.6 - 2.84	Ewes	1.58 - 1.63	371 (incl.goats)		
		50-60	-	2.64 - 2.98	80-90	-	2.95 - 3.09	100-110	-	2.6 - 2.87	Rams	1.59 - 1.71			
		60-70	-	3.1 - 3.26				110+	-	2.26 - 2.87	Bred Ewes	- - -			
20-Nov-21	Picture Butte www.picturebutteauction.ca							Feeder	-	2 - 2.43	Slaughter Ewes	1.06 - 1.19	-		
								Slaughter	-	1.97 - 2.08	Feeder Ewes	- - -			
											Ewe&lamb(s)	- - -			
											Bred ewes	- - -			
										Rams	-				

Ontario Live Animal Markets

22-Nov-21	OSI www.ontariosheep.org	0-50	5	2.95 - 3.00	65-80	87	3.35 - 3.90	95-110	93	2.6 - 2.78	Sheep	1.70 - 2.48	600
		50-64	126	2.58 - 4.08	80-95	47	2.90 - 3.29	110+	2	2.4 - 2.40			
23-Nov-21	OLEX www.ontariosheep.org	0-50	47	3.55 - 4.15	65-79	572	3.04 - 3.71	95-109	680	2.58 - 2.70	Sheep	1.25 - 2.30	2857
		50-64	323	3.75 - 4.20	80-94	759	2.65 - 3.15	110+	198	2.50 - 2.70			
22-Nov-21	Embrun www.ontariosheep.org	0-50	2	4.40 - 4.55	65-79	82	3.1 - 3.65	95-109	84	2.54 - 2.80	Sheep	1.65 - 2.10	400
		50-64	33	3.65 - 4.20	80-94	159	2.85 - 3.18	110+	18	2.4 - 2.60			
18-Nov-21	Brussels www.ontariosheep.org	0-50	1	4.6 - 4.60	65-79	39	3.7 - 4.14	95-109	190	2.58 - 2.80	Sheep	1.20 - 2.63	432
		50-64	7	3.4 - 3.60	80-94	59	2.71 - 3.13	110+	75	2.3 - 2.61			

Alberta Lamb Producers does not endorse individual markets or verify prices provided.

Trends* in auction price for heavy lambs in Alberta



*Due to differences among auctions, prices are reported as 'trends' rather than averages.
 This graph is updated on weeks with two or more markets reporting prices.