

Alberta Live Animal Markets: Visit individual market websites for more information about applicable auction fees and upcoming sales.

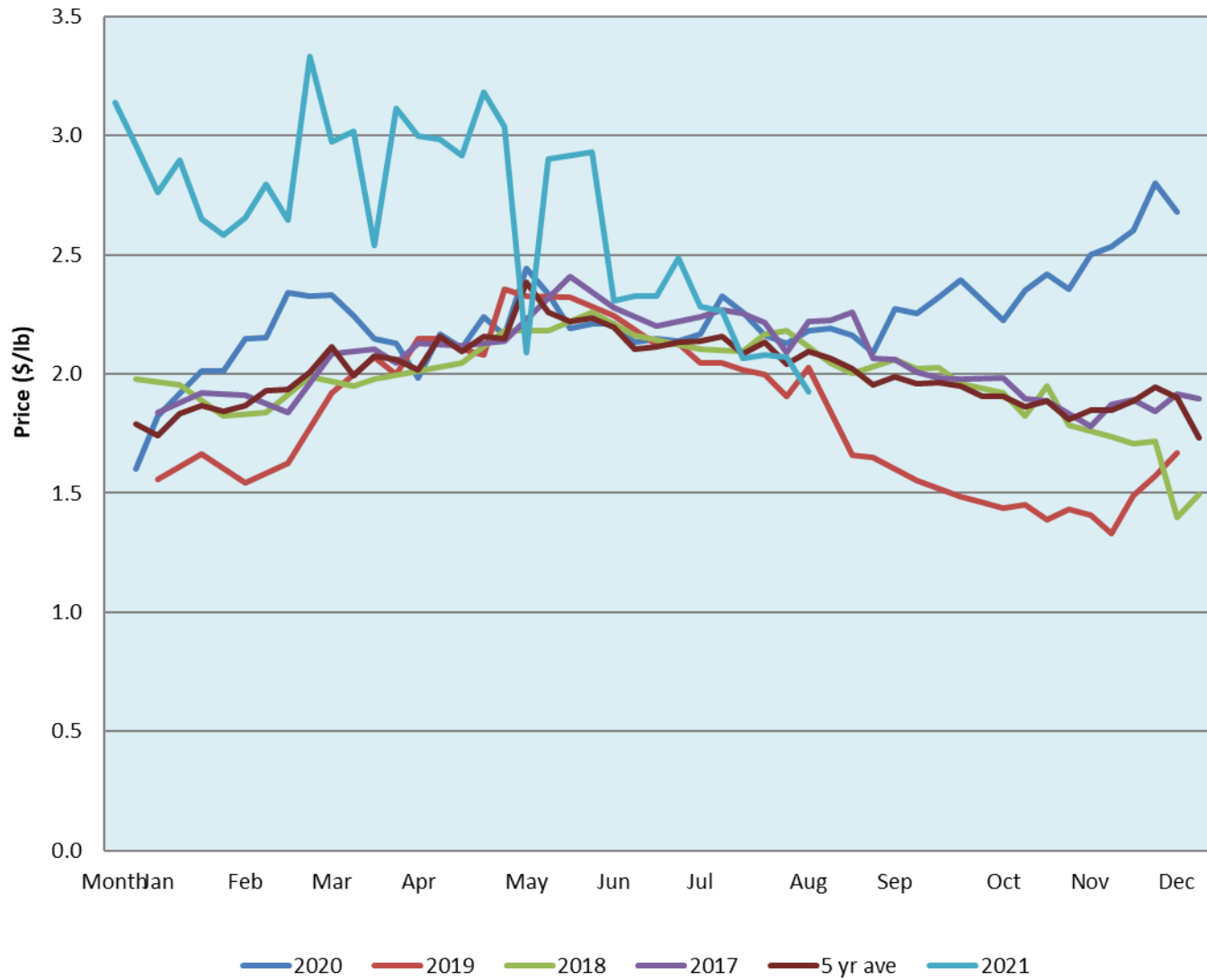
Date	Sale	Lambs (\$/lb)			Lambs (\$/lb)			Lambs (\$/lb)			Sheep(\$/lb): Bred ewes \$/hd		Total Head		
		Weight (lbs)	Head	low - high	Weight (lbs)	Head	low - high	Weight (lbs)	Head	low - high	low - high	low - high			
23-Aug-21	Beaver Hill www.beaverhillauctions.com	0-54: wool	-	1.51 - 2.12	70-85: wool	-	1.70 - 2.10	86-105:wool	-	1.80 - 2.10	Ewes: wool	1.10 - 1.80	1189		
		0-54: hair	-	1.25 - 1.68				86-105:hair			-	1.80 - 1.96		Ewes: hair	1.10 - 1.50
		55-69: wool	-	1.79 - 2.19	70-85: hair	-	1.45 - 1.90	106+:wool	-	2 - 2.19	Rams: wool	1.05 - 1.48			
		55-69: hair	-	1.30 - 1.75				106+:hair			-	1.8 - 2.15		Rams: hair	1.50 - 1.90
			-								-			Bred Ewes	0.00 - 0.00
								-		Ewe&Lamb(s)	0 - 0				
No sale this week	VJV Westlock www.vjvauction.com	0-69: wool	-	- - -	70-85: wool	-	- - -	86-105: wool	-	- - -	Ewes: wool	- - -	-		
			-					86-105: hair	-	- - -	Ewes: hair	- - -			
			-						106+: wool	-	- - -	Rams: wool		- - -	
		0-69: hair	-	- - -	70-85: hair	-	- - -	106+: hair	-	- - -	Rams: hair	- - -			
			-							-	- - -	Bred Ewes:wool		- - -	
									-	Ewe&Lamb:hair	- - -				
24-Aug-21	Olds Auction www.oldsauktion.com	30-50	-	1.49 - 1.70	70-80	-	1.56 - 1.64	90-100	-	1.35 - 1.67	Ewes	1.24 - 1.41	270 (incl.goats)		
		50-60	-	1.56 - 1.71	80-90	-	1.55 - 1.61	100-110	-	1.35 - 1.67	Rams	0.90 - 1.05			
		60-70	-	1.0 - 1.63				110+	-	1.6 - 1.91	Bred Ewes	- - -			
Information unavailable	Picture Butte www.picturebutteauction.ca							Feeder	-	- - -	Slaughter Ewes	- - -	-		
								Slaughter	-	- - -	Feeder Ewes	- - -			
											Ewe&lamb(s)	- - -			
											Bred ewes	- - -			
											Rams	- - -			

Ontario Live Animal Markets

23-Aug-21	OSI www.ontariosheep.org	0-50	25	1.70 - 3.15	65-80	309	2.28 - 2.69	95-110	163	2 - 2.07	Sheep	1.67 - 2.22	1381
		50-64	274	2.65 - 3.05	80-95	229	2.13 - 2.27	110+	23	1.9 - 1.95			
24-Aug-21	OLEX www.ontariosheep.org	0-50	117	2.50 - 3.30	65-79	374	2.25 - 2.75	95-109	588	2.14 - 2.25	Sheep	1.30 - 2.00	2292
		50-64	286	2.35 - 3.03	80-94	397	2.18 - 2.43	110+	168	2.01 - 2.20			
23-Aug-21	Embrun www.ontariosheep.org	0-50	11	2.20 - 2.60	65-79	142	2.29 - 2.70	95-109	33	1.67 - 2.60	Sheep	1.45 - 1.75	414
		50-64	27	2.25 - 2.45	80-94	103	1.95 - 2.65	110+	34	1.25 - 1.85			
19-Aug-21	Brussels www.ontariosheep.org	0-50	11	2.9 - 3.05	65-79	101	2.475 - 2.95	95-109	104	2.05 - 2.13	Sheep	1.90 - 2.38	478
		50-64	27	3 - 3.38	80-94	144	2.09 - 2.30	110+	51	1.91 - 2.12			

Alberta Lamb Producers does not endorse individual markets or verify prices provided.

Trends* in auction price for heavy lambs in Alberta



*Due to differences among auctions, prices are reported as 'trends' rather than averages.
 This graph is updated on weeks with two or more markets reporting prices.