

**Alberta Live Animal Markets: Visit individual market websites for more information about applicable auction fees and upcoming sales**

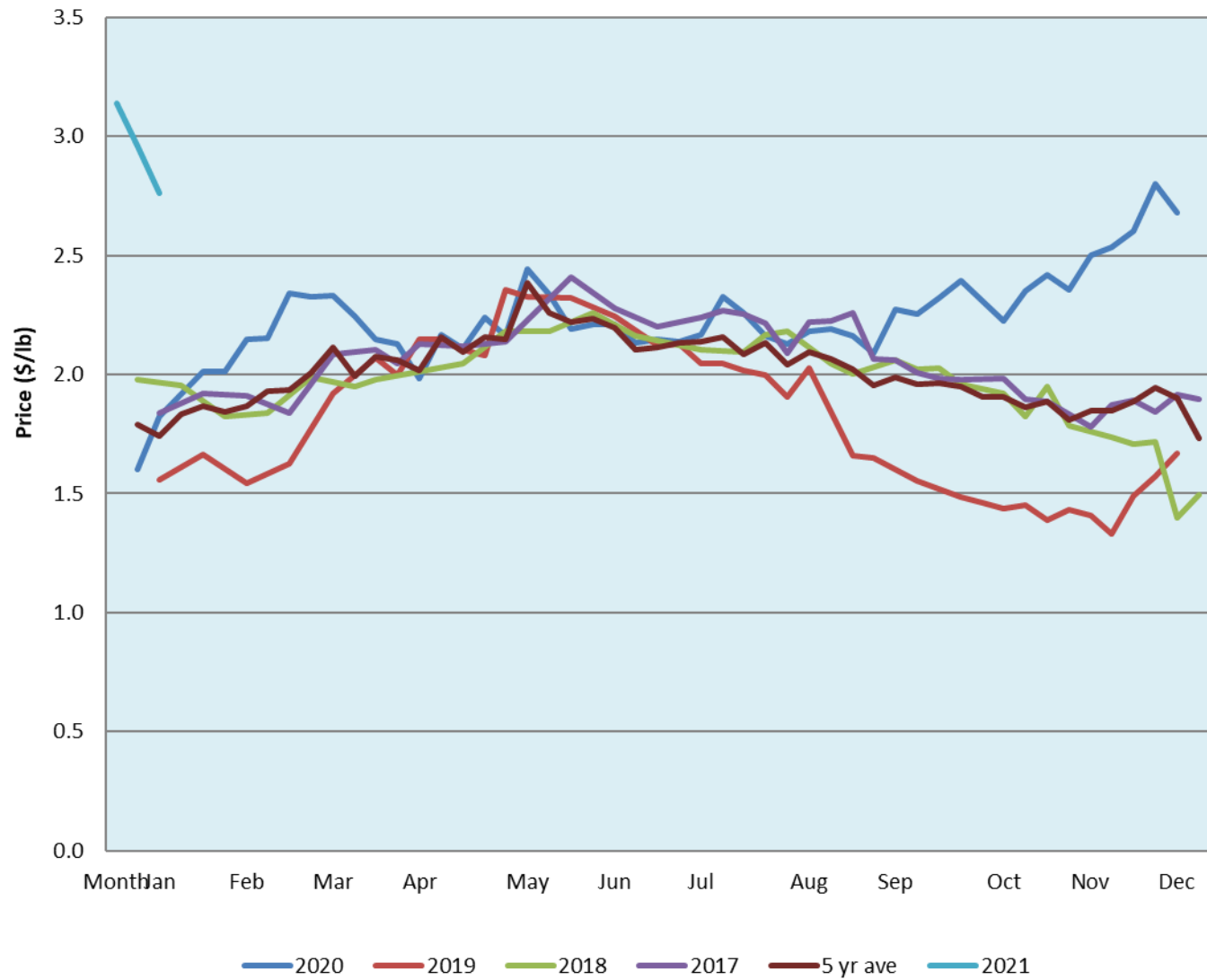
Date	Sale	Lambs (\$/lb)		Lambs (\$/lb)		Lambs (\$/lb)		Sheep(\$/lb): Bred ewes \$/hd		Head
		Weight (lbs)	low - high	Weight (lbs)	low - high	Weight (lbs)	low - high		low - high	
25-Jan-21	Beaver Hill <a href="http://www.beaverhillauctions.com">www.beaverhillauctions.com</a>	0-54: wool	3.30 - 3.90	70-85: wool	3.60 - 4.06	86-105:wool	3.00 - 3.82	Ewes: wool	2.00 - 2.80	951
		0-54: hair	3.00 - 3.65			86-105:hair	3.00 - 3.55	Ewes: hair	2.30 - 3.00	
		55-69: wool	3.80 - 4.60	70-85: hair	3.40 - 3.85	106+:wool	2.60 - 3.05	Rams: wool	1.90 - 2.65	
		55-69: hair	3.45 - 4.20			106+:hair	2.60 - 2.90	Rams: hair	2.15 - 2.50	
								Bred Ewes	3.00 - 4.50	
						Ewe&Lamb(s)	5 - 6			
No sale this week	VJV Westlock <a href="http://www.vjvauction.com">www.vjvauction.com</a>	0-69: wool	- - -	70-85: wool	- - -	86-105: wool	- - -	Ewes: wool	- - -	-
						86-105: hair	- - -	Ewes: hair	- - -	
		0-69: hair	- - -	70-85: hair	- - -	106+: wool	- - -	Rams: wool	- - -	
						106+: hair	- - -	Rams: hair	- - -	
								Bred Ewes:wool	- - -	
						Ewe&Lamb:hair	- - -			
26-Jan-21	Olds Auction <a href="http://www.oldsauction.com">www.oldsauction.com</a>	30-50	3.57 - 3.80	70-80	3.80 - 4.33	90-100	2.20 - 2.61	Ewes	1.95 - 2.46	60  (incl.goats)
		50-60	3.57 - 4.01	80-90	3.40 - 3.83	100-110	2.21 - 2.60	Rams	1.98 - 2.40	
		60-70	3.80 - 4.35			110+	2.21 - 2.58	Bred Ewes	- - -	
23-Jan-21	Picture Butte <a href="http://www.picturebutteauction.ca">www.picturebutteauction.ca</a>					Feeder	2.85 - 3.32	Slaughter Ewes	- - -	-
						Slaughter	3.00 - 3.13	Feeder Ewes	- - -	
								Ewe&lamb(s)	- - -	
								Bred ewes	- - -	
								Rams	- - -	

**Ontario Live Animal Markets**

25-Jan-21	OSI <a href="http://www.ontariosheep.org">www.ontariosheep.org</a>	0-50	3.45 - 4.05	65-80	3.70 - 4.00	95-110	3.33 - 3.35	Sheep	2.05 - 2.70	689
		50-64	3.90 - 4.00	80-95	3.30 - 3.81	110+	2.65 - 3.33			
26-Jan-21	OLEX <a href="http://www.ontariosheep.org">www.ontariosheep.org</a>	0-50	5.02 - 5.40	65-79	3.58 - 4.23	95-109	3.23 - 3.35	Sheep	1.80 - 2.55	1523
		50-64	3.88 - 4.43	80-94	3.18 - 3.45	110+	2.45 - 3.23			
25-Jan-21	Embrun <a href="http://www.ontariosheep.org">www.ontariosheep.org</a>	0-50	4.60 - 4.60	65-79	3.70 - 4.30	95-109	3.50 - 3.65	Sheep	2.20 - 2.55	212
		50-64	4.05 - 4.50	80-94	3.80 - 4.10	110+	2.45 - 2.60			
21-Jan-21	Brussels <a href="http://www.ontariosheep.org">www.ontariosheep.org</a>	0-50	0.00 - 0.00	65-79	3.88 - 4.24	95-109	3.00 - 3.17	Sheep	2.20 - 2.90	252
		50-64	4.13 - 4.40	80-94	3.21 - 3.61	110+	0.00 - 0.00			

Alberta Lamb Producers does not endorse individual markets or verify prices provided.

## Trends\* in auction price for heavy lambs in Alberta



\*Due to differences among auctions, prices are reported as 'trends' rather than averages.  
This graph is updated on weeks with two or more markets reporting prices.