

Alberta Live Animal Markets: Visit individual market websites for more information about applicable auction fees and upcoming sales

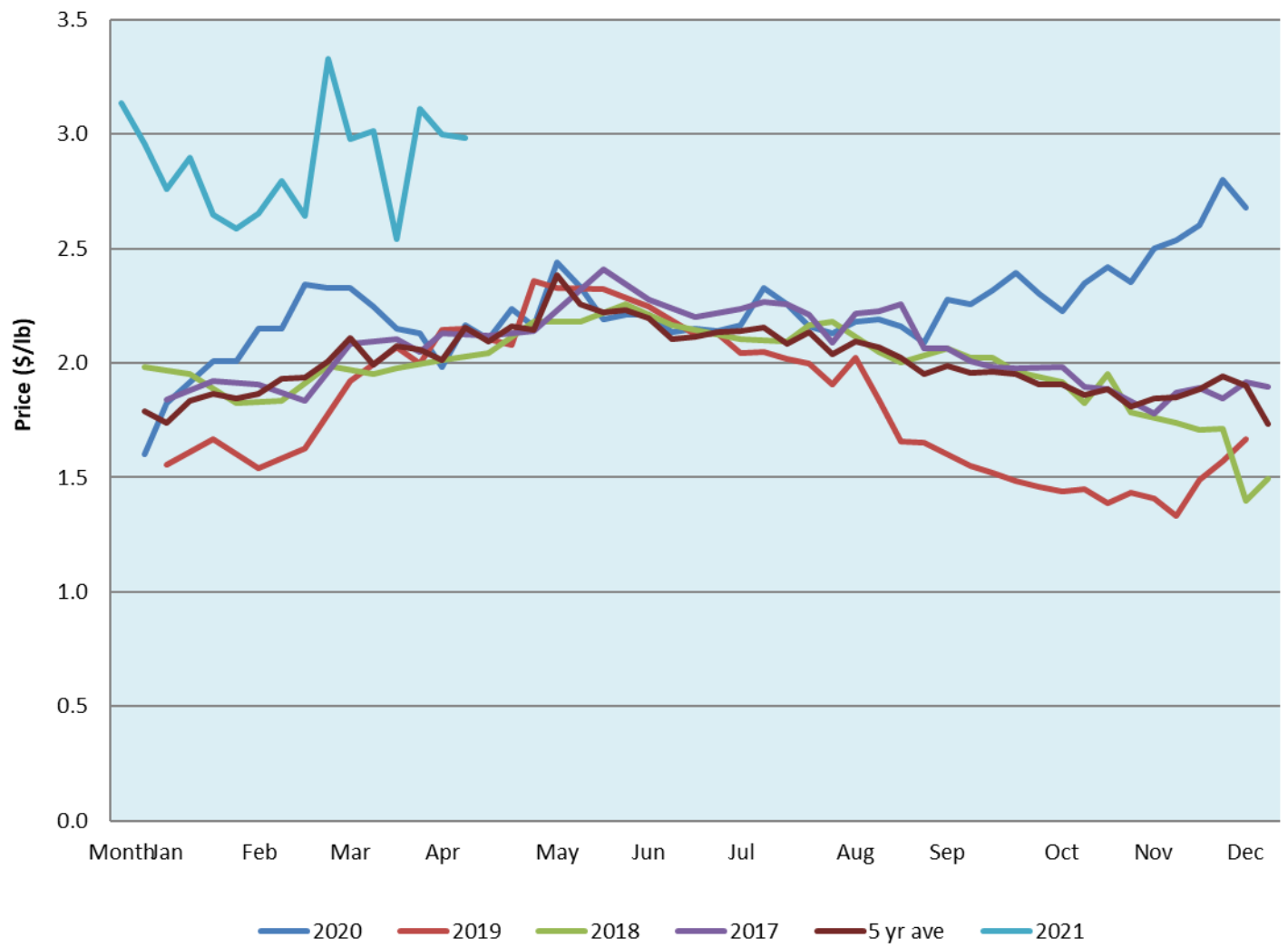
Date	Sale	Lambs (\$/lb)		Lambs (\$/lb)		Lambs (\$/lb)		Sheep(\$/lb): Bred ewes \$/hd		Head
		Weight (lbs)	low - high	Weight (lbs)	low - high	Weight (lbs)	low - high		low - high	
26-Apr-21	Beaver Hill www.beaverhillauctions.com	0-54: wool	4.25 - 4.60	70-85: wool	3.65 - 4.30	86-105:wool	2.96 - 3.96	Ewes: wool	1.38 - 3.35	546
		0-54: hair	4.00 - 4.25			86-105:hair	2.90 - 3.75	Ewes: hair	2.20 - 2.45	
		55-69: wool	3.80 - 4.55	70-85: hair	3.65 - 3.92	106+:wool	2.80 - 3.20	Rams: wool	1.55 - 2.15	
		55-69: hair	3.60 - 4.25			106+:hair	2.60 - 3.00	Rams: hair	1.40 - 2.10	
								Bred Ewes	3.70 - 5.30	
						Ewe&Lamb(s)	4 - 5			
No sale this week	VJV Westlock www.vjvauction.com	0-69: wool	- - -	70-85: wool	- - -	86-105: wool	- - -	Ewes: wool	- - -	-
						86-105: hair	- - -	Ewes: hair	- - -	
		0-69: hair	- - -	70-85: hair	- - -	106+: wool	- - -	Rams: wool	- - -	
						106+: hair	- - -	Rams: hair	- - -	
								Bred Ewes:wool	- - -	
								Ewe&Lamb:hair	- - -	
27-Apr-21	Olds Auction www.oldsauction.com	30-50	3.50 - 3.81	70-80	3.35 - 3.46	90-100	2.90 - 3.01	Ewes	1.60 - 1.71	204 (incl.goats)
		50-60	3.64 - 3.87	80-90	3.22 - 3.37	100-110	2.92 - 3.00	Rams	1.31 - 1.45	
		60-70	3.46 - 3.57			110+	2.94 - 3.00	Bred Ewes	- - -	
No sale this week	Picture Butte www.picturebutteauction.ca					Feeder	- - -	Slaughter Ewes	- - -	-
						Slaughter	- - -	Feeder Ewes	- - -	
								Ewe&lamb(s)	- - -	
								Bred ewes	- - -	
								Rams	- - -	

Ontario Live Animal Markets

26-Apr-21	OSI www.ontariosheep.org	0-50	3.88 - 4.30	65-80	3.80 - 4.20	95-110	3.55 - 3.75	Sheep	0.83 - 2.20	1608
		50-64	3.95 - 4.31	80-95	3.60 - 3.76	110+	3.60 - 3.60			
27-Apr-21	OLEX www.ontariosheep.org	0-50	4.60 - 5.80	65-79	3.90 - 4.28	95-109	3.83 - 4.10	Sheep	0.80 - 2.25	2253
		50-64	4.48 - 5.38	80-94	3.80 - 4.10	110+	2.98 - 3.95			
26-Apr-21	Embrun www.ontariosheep.org	0-50	4.50 - 4.70	65-79	3.64 - 4.10	95-109	3.50 - 4.00	Sheep	0.85 - 2.20	523
		50-64	3.45 - 4.00	80-94	3.65 - 3.92	110+	2.50 - 3.00			
22-Apr-21	Brussels www.ontariosheep.org	0-50	4.20 - 4.32	65-79	3.86 - 4.24	95-109	3.69 - 3.84	Sheep	1.00 - 2.60	674
		50-64	4.08 - 4.32	80-94	3.85 - 3.97	110+	3.37 - 3.79			

Alberta Lamb Producers does not endorse individual markets or verify prices provided.

Trends* in auction price for heavy lambs in Alberta



*Due to differences among auctions, prices are reported as 'trends' rather than averages. This graph is updated on weeks with two or more markets reporting prices.