

Alberta Live Animal Markets: Visit individual market websites for more information about applicable auction fees and upcoming sales.

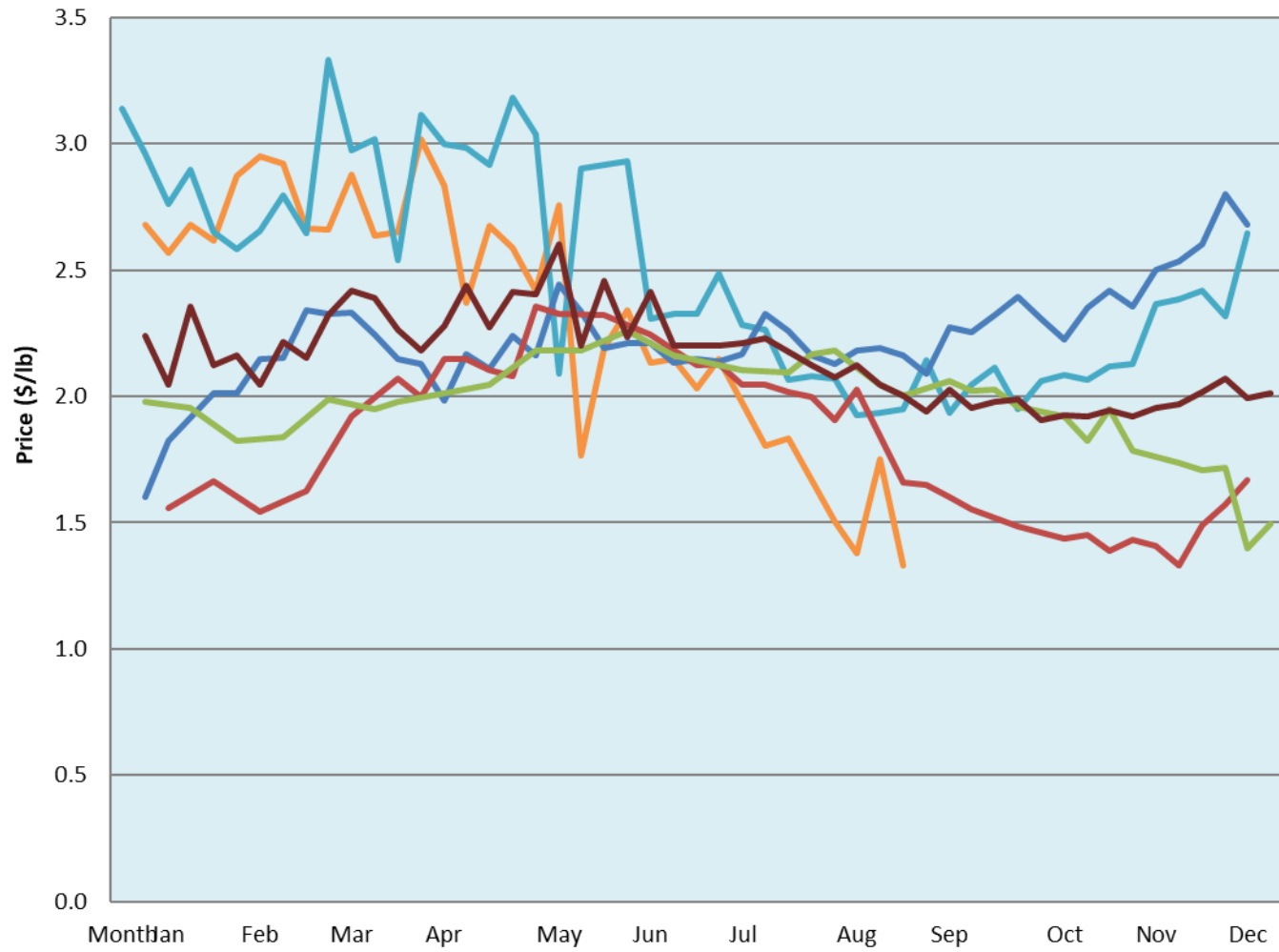
Date	Sale	Lambs (\$/lb)			Lambs (\$/lb)			Lambs (\$/lb)			Sheep(\$/lb): Bred ewes \$/hd		Total Head		
		Weight (lbs)	Head	low - high	Weight (lbs)	Head	low - high	Weight (lbs)	Head	low - high	low - high				
29-Aug-22	Beaver Hill www.beaverhillauctions.com	0-54: wool	-	1.86 - 2.36	70-85: wool	-	1.60 - 1.99	86-105:wool	-	1.42 - 1.88	Ewes: wool	0.90 - 1.55	1156		
		0-54: hair	-	1.60 - 2.05				86-105:hair			-	1.50 - 1.81		Ewes: hair	0.90 - 1.50
		55-69: wool	-	1.70 - 2.30				106+:wool			-	1.30 - 1.80		Rams: wool	0.90 - 1.85
		55-69: hair	-	1.70 - 1.90	70-85: hair	-	1.60 - 1.81	106+:hair	-	0.90 - 1.50	Rams: hair	1.25 - 1.75			
											Bred Ewes	1.85 - 2.15			
No sale this week	VJV Westlock www.vjvauction.com	0-69: wool	-	- - -	70-85: wool	-	- - -	86-105: wool	-	- - -	Ewes: wool	- - -	-		
			-					86-105: hair	-	- - -	Ewes: hair	- - -			
			-						106+: wool	-	- - -	Rams: wool		- - -	
		0-69: hair	-	- - -	70-85: hair	-	- - -	106+: hair	-	- - -	Rams: hair	- - -			
			-								Bred Ewes:wool	- - -			
30-Aug-22	Olds Auction www.oldsauktion.com	30-50	-	1.1 - 1.60	70-80	-	1.5 - 1.66	90-100	-	1.31 - 1.63	Ewes	0.62 - 1.18	398 (incl.goats)		
		50-60	-	1.18 - 1.50	80-90	-	1.5 - 1.64	100-110	-	1.34 - 1.51	Rams	0.90 - 1.25			
		60-70	-	1.58 - 1.71				110+	-	1.13 - 1.34	Bred Ewes	- - -			
27-Aug-22	Picture Butte www.picturebutteauction.ca							Feeder	-	1.35 - 1.50	Slaughter Ewes	0.40 - 0.65	-		
								Slaughter	-	1.18 - 1.23	Feeder Ewes	- - -			
											Ewe&lamb(s)	- - -			
											Bred ewes	- - -			
										Rams	- - -				

Ontario Live Animal Markets

29-Aug-22	OSI www.ontariosheep.org	0-50	18	1.80 - 2.50	65-80	134	2.20 - 2.41	95-110	113	1.7 - 1.95	Sheep	1.06 - 1.90	1236
		50-64	36	2.45 - 2.55	80-95	330	1.75 - 1.90	110+	9	1.76 - 1.80			
30-Aug-22	OLEX www.ontariosheep.org	0-50	53	3.50 - 3.78	65-79	210	2.30 - 3.03	95-109	798	1.71 - 2.05	Sheep	1.30 - 2.15	2176
		50-64	86	2.75 - 3.68	80-94	545	1.90 - 2.43	110+	202	1.70 - 2.00			
29-Aug-22	Embrun www.ontariosheep.org	0-50	4	2.00 - 2.34	65-79	121	2.25 - 2.62	95-109	92	2 - 2.40	Sheep	0.75 - 1.30	403
		50-64	36	2.20 - 2.50	80-94	99	2.05 - 2.50	110+	3	1.55 - 1.80			
25-Aug-22	Brussels www.ontariosheep.org	0-50	23	1.9 - 2.75	65-79	118	2 - 2.53	95-109	113	1.5 - 1.75	Sheep	1.32 - 2.25	620
		50-64	50	2.4 - 3.05	80-94	177	1.6 - 1.95	110+	76	1.59 - 1.65			

Alberta Lamb Producers does not endorse individual markets or verify prices provided.

Trends* in auction price for heavy lambs in Alberta



— 2022 — 2021 — 2020 — 2019 — 2018 — 5 yr ave

*Due to differences among auctions, prices are reported as 'trends' rather than averages.
This graph is updated on weeks with two or more markets reporting prices.