

Alberta Live Animal Markets: Visit individual market websites for more information about applicable auction fees and upcoming sales.

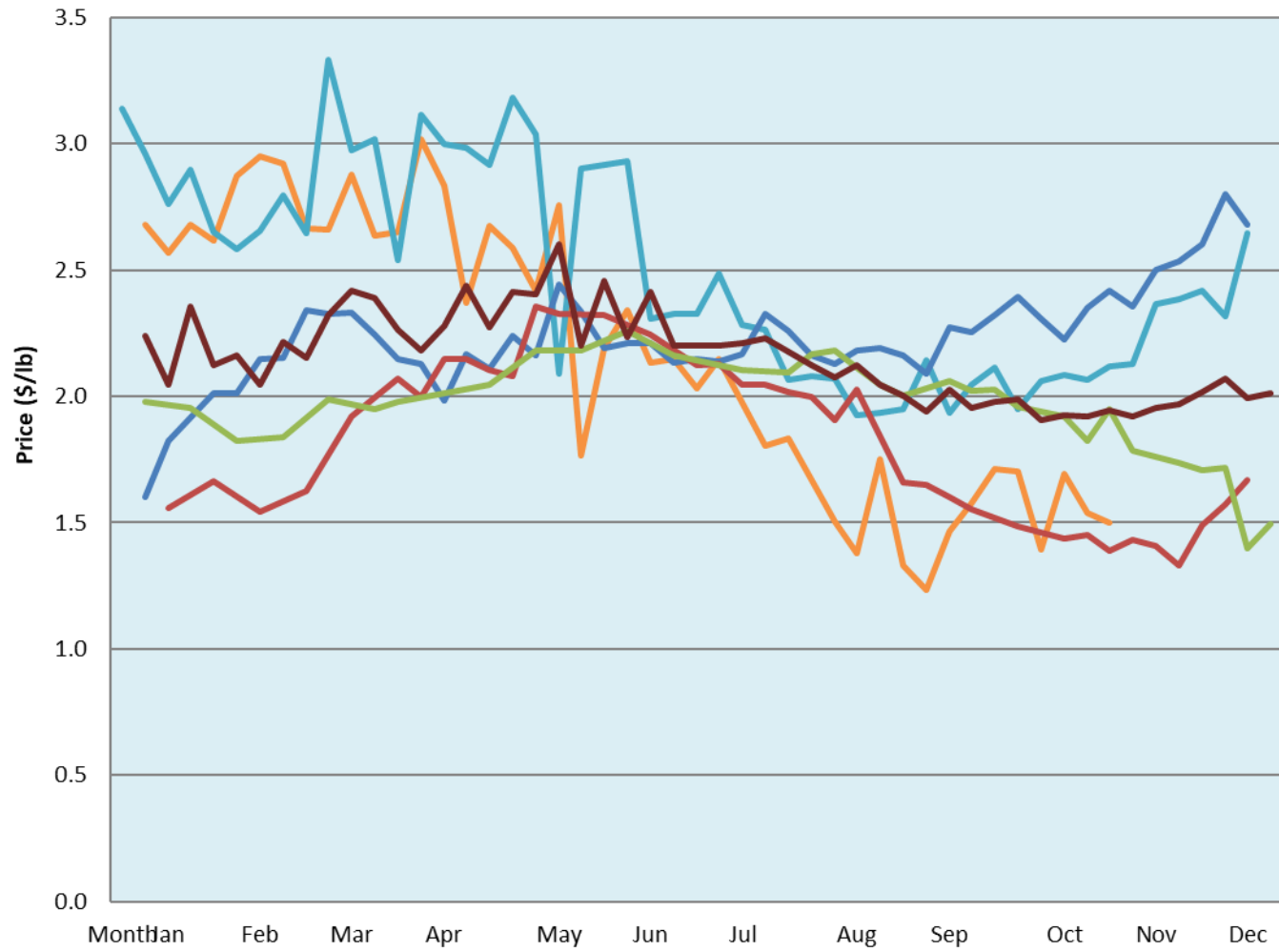
Date	Sale	Lambs (\$/lb)			Lambs (\$/lb)			Lambs (\$/lb)			Sheep(\$/lb): Bred ewes \$/hd		Total Head		
		Weight (lbs)	Head	low - high	Weight (lbs)	Head	low - high	Weight (lbs)	Head	low - high	low - high				
31-Oct-22	Beaver Hill www.beaverhillauctions.com	0-54: wool	-	1.50 - 2.30	70-85: wool	-	1.80 - 2.20	86-105:wool	-	1.65 - 1.92	Ewes: wool	0.80 - 1.40	1978		
		0-54: hair	-	1.40 - 1.80				86-105:hair			-	1.45 - 1.66		Rams: wool	0.80 - 1.38
		55-69: wool	-	2.00 - 2.35				106+:wool			-	1.50 - 1.72		Rams: hair	0.94 - 1.15
		55-69: hair	-	1.50 - 1.95	70-85: hair	-	1.50 - 1.86	106+:hair	-	0.80 - 1.60	Bred Ewes	1.95 - 2.50			
											Ewe&Lamb(s)	0.00 - 0.00			
No sale this week	VJV Westlock www.vjvauction.com	0-69: wool	-	- - -	70-85: wool	-	- - -	86-105: wool	-	- - -	Ewes: wool	- - -	-		
			-					86-105: hair	-	- - -	Ewes: hair	- - -			
			-						106+: wool	-	- - -	Rams: wool		- - -	
		0-69: hair	-	- - -	70-85: hair	-	- - -	106+: hair	-	- - -	Rams: hair	- - -			
			-								Bred Ewes:wool	- - -			
01-Nov-22	Olds Auction www.oldsauktion.com	30-50	-	1.42 - 1.93	70-80	-	1.75 - 1.80	90-100	-	1.51 - 1.61	Ewes	0.60 - 1.21	170 (incl.goats)		
		50-60	-	1.61 - 1.71	80-90	-	1.56 - 1.89	100-110	-	1.57 - 1.62	Rams	1.05 - 1.28			
		60-70	-	1.93 - 2.04				110+	-	1.35 - 1.50	Bred Ewes	- - -			
29-Oct-22	Picture Butte www.picturebutteauction.ca							Feeder	-	1.4 - 1.85	Slaughter Ewes	0.80 - 1.10	-		
								Slaughter	-	1.4 - 1.53	Feeder Ewes	- - -			
											Ewe&lamb(s)	- - -			
											Bred ewes	- - -			
										Rams	1.50 - 1.65				

Ontario Live Animal Markets

31-Oct-22	OSI www.ontariosheep.org	0-50	14	2.05 - 3.08	65-80	196	2.60 - 2.90	95-110	220	1.9 - 2.45	Sheep	1.04 - 1.91	1638
		50-64	150	2.4 - 3.01	80-95	270	2.33 - 2.70	110+	48	1.96 - 0.00			
01-Nov-22	OLEX www.ontariosheep.org	0-50	95	3.35 - 4.00	65-79	344	2.38 - 3.30	95-109	605	2.15 - 2.31	Sheep	1.43 - 2.15	2202
		50-64	195	2.90 - 3.53	80-94	488	2.23 - 2.63	110+	233	2.00 - 2.21			
31-Oct-22	Embrun www.ontariosheep.org	0-50	19	1.05 - 2.72	65-79	102	2.4 - 2.74	95-109	26	1.85 - 2.40	Sheep	0.95 - 1.30	388
		50-64	58	2.40 - 2.57	80-94	93	2.47 - 2.68	110+	8	1.27 - 1.32			
27-Oct-22	Brussels www.ontariosheep.org	0-50	0	0 - 0.00	65-79	19	2.4 - 3.35	95-109	144	2.09 - 2.36	Sheep	0.90 - 1.75	414
		50-64	5	2.3 - 3.65	80-94	107	2.6 - 3.33	110+	70	2 - 2.16			

Alberta Lamb Producers does not endorse individual markets or verify prices provided.

Trends* in auction price for heavy lambs in Alberta



— 2022
 — 2021
 — 2020
 — 2019
 — 2018
 — 5 yr ave

*Due to differences among auctions, prices are reported as 'trends' rather than averages.
 This graph is updated on weeks with two or more markets reporting prices.