

**Alberta Live Animal Markets: Visit individual market websites for more information about applicable auction fees and upcoming sales.**

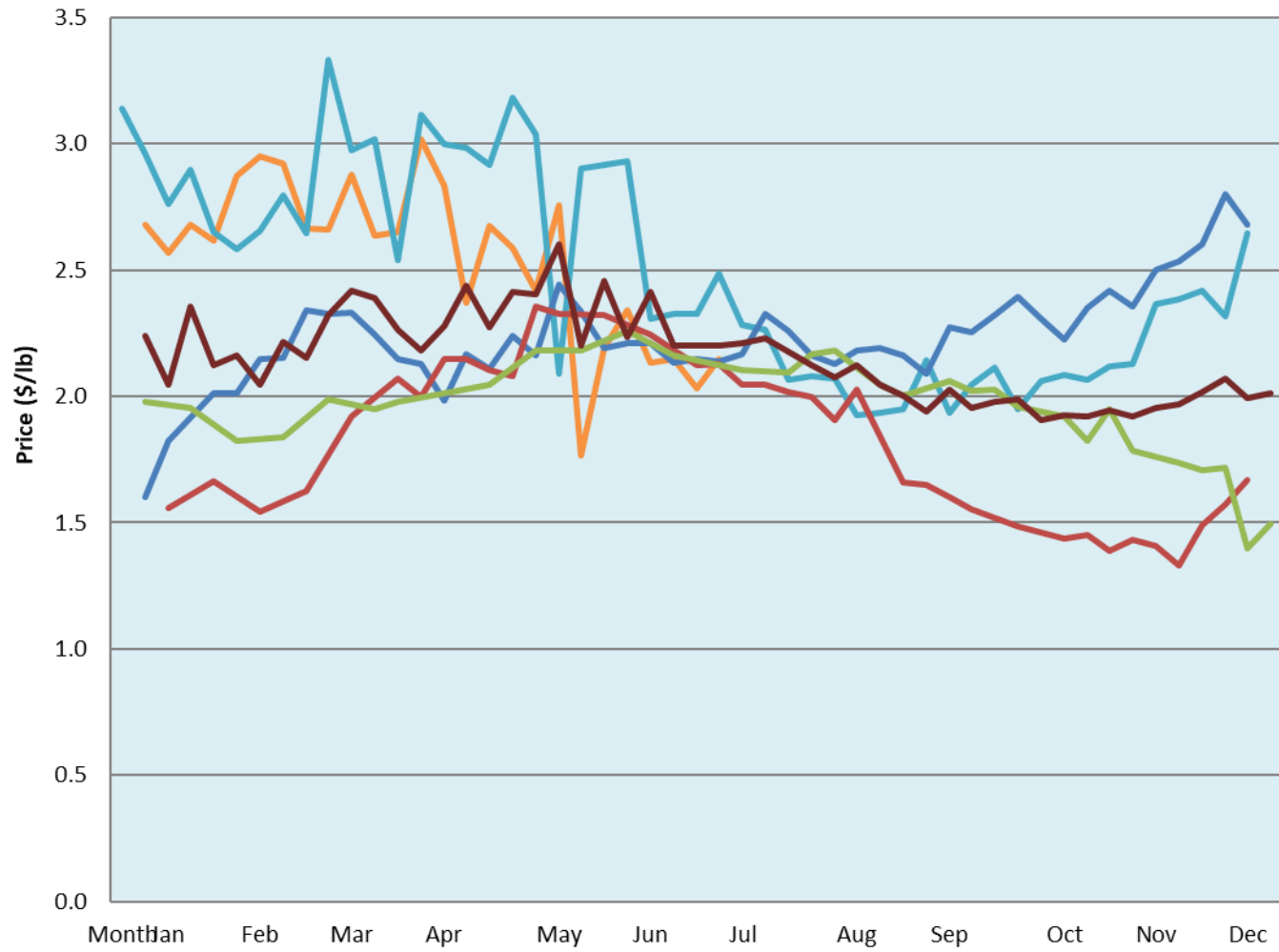
Date	Sale	Lambs (\$/lb)			Lambs (\$/lb)			Lambs (\$/lb)			Sheep(\$/lb): Bred ewes \$/hd		Total Head		
		Weight (lbs)	Head	low - high	Weight (lbs)	Head	low - high	Weight (lbs)	Head	low - high	low - high				
04-Jul-22	Beaver Hill <a href="http://www.beaverhillauctions.com">www.beaverhillauctions.com</a>	0-54: wool	-	1.90 - 2.42	70-85: wool	-	2.00 - 2.48	86-105:wool	-	2.00 - 2.53	Ewes: wool	0.85 - 1.85	811		
		0-54: hair	-	1.50 - 2.00				86-105:hair			-	1.90 - 2.55		Rams: wool	1.23 - 1.53
		55-69: wool	-	1.90 - 2.35				106+:wool			-	2.00 - 2.55		Rams: hair	1.60 - 2.20
		55-69: hair	-	1.80 - 2.20	70-85: hair	-	1.90 - 2.40	106+:hair	-	0.90 - 2.10	Bred Ewes	0.00 - 0.00			
											Ewe&Lamb(s)	0.00 - 0.00			
No sale this week	VJV Westlock <a href="http://www.vjvauction.com">www.vjvauction.com</a>	0-69: wool	-	- - -	70-85: wool	-	- - -	86-105: wool	-	- - -	Ewes: wool	- - -	-		
								86-105: hair	-	- - -	Ewes: hair	- - -			
									106+: wool	-	- - -	Rams: wool		- - -	
		0-69: hair	-	- - -	70-85: hair	-	- - -	106+: hair	-	- - -	Rams: hair	- - -			
											Bred Ewes:wool	- - -			
									Ewe&Lamb:hair	- - -					
05-Jul-22	Olds Auction <a href="http://www.oldsauktion.com">www.oldsauktion.com</a>	30-50	-	0.9 - 1.95	70-80	-	2.04 - 2.16	90-100	-	2.31 - 2.44	Ewes	0.83 - 1.62	438		
		50-60	-	2 - 2.33	80-90	-	2.08 - 2.31	100-110	-	2.11 - 2.47	Rams	0.72 - 1.27			
		60-70	-	2.01 - 2.27		110+		-	1.88 - 2.17	Bred Ewes	- - -	(incl.goats)			
Information unavailable	Picture Butte <a href="http://www.picturebutteauction.ca">www.picturebutteauction.ca</a>							Feeder	-	- - -	Slaughter Ewes	- - -	-		
								Slaughter	-	- - -	Feeder Ewes	- - -			
											Ewe&lamb(s)	- - -			
											Bred ewes	- - -			
										Rams	- - -				

**Ontario Live Animal Markets**

04-Jul-22	OSI <a href="http://www.ontariosheep.org">www.ontariosheep.org</a>	0-50	149	2.00 - 2.55	65-80	547	2.28 - 3.00	95-110	465	2.7 - 3.04	Sheep	1.12 - 2.08	3526
		50-64	486	2.15 - 2.50	80-95	629	2.54 - 3.20	110+	246	1.8851 - 2.34			
05-Jul-22	OLEX <a href="http://www.ontariosheep.org">www.ontariosheep.org</a>	0-50	65	2.65 - 3.65	65-79	839	2.45 - 3.10	95-109	1000	2.78 - 3.20	Sheep	0.50 - 2.13	4733
		50-64	424	2.60 - 3.15	80-94	1737	2.72 - 3.25	110+	356	2.30 - 2.73			
06-Jul-22	Embrun <a href="http://www.ontariosheep.org">www.ontariosheep.org</a>	0-50	22	1.60 - 3.05	65-79	273	2.7 - 3.60	95-109	34	3.65 - 4.00	Sheep	0.67 - 1.20	741
		50-64	138	2.40 - 3.05	80-94	175	3.4 - 4.15	110+	27	3.45 - 4.10			
30-Jun-22	Brussels <a href="http://www.ontariosheep.org">www.ontariosheep.org</a>	0-50	6	2.8 - 2.80	65-79	149	2.775 - 3.00	95-109	252	2.82 - 2.96	Sheep	0.95 - 2.40	924
		50-64	137	2.825 - 2.98	80-94	218	2.84 - 3.00	110+	38	2.45 - 2.85			

**Alberta Lamb Producers does not endorse individual markets or verify prices provided.**

### Trends\* in auction price for heavy lambs in Alberta



— 2022 — 2021 — 2020 — 2019 — 2018 — 5 yr ave

\*Due to differences among auctions, prices are reported as 'trends' rather than averages.  
This graph is updated on weeks with two or more markets reporting prices.