

**Alberta Live Animal Markets: Visit individual market websites for more information about applicable auction fees and upcoming sales.**

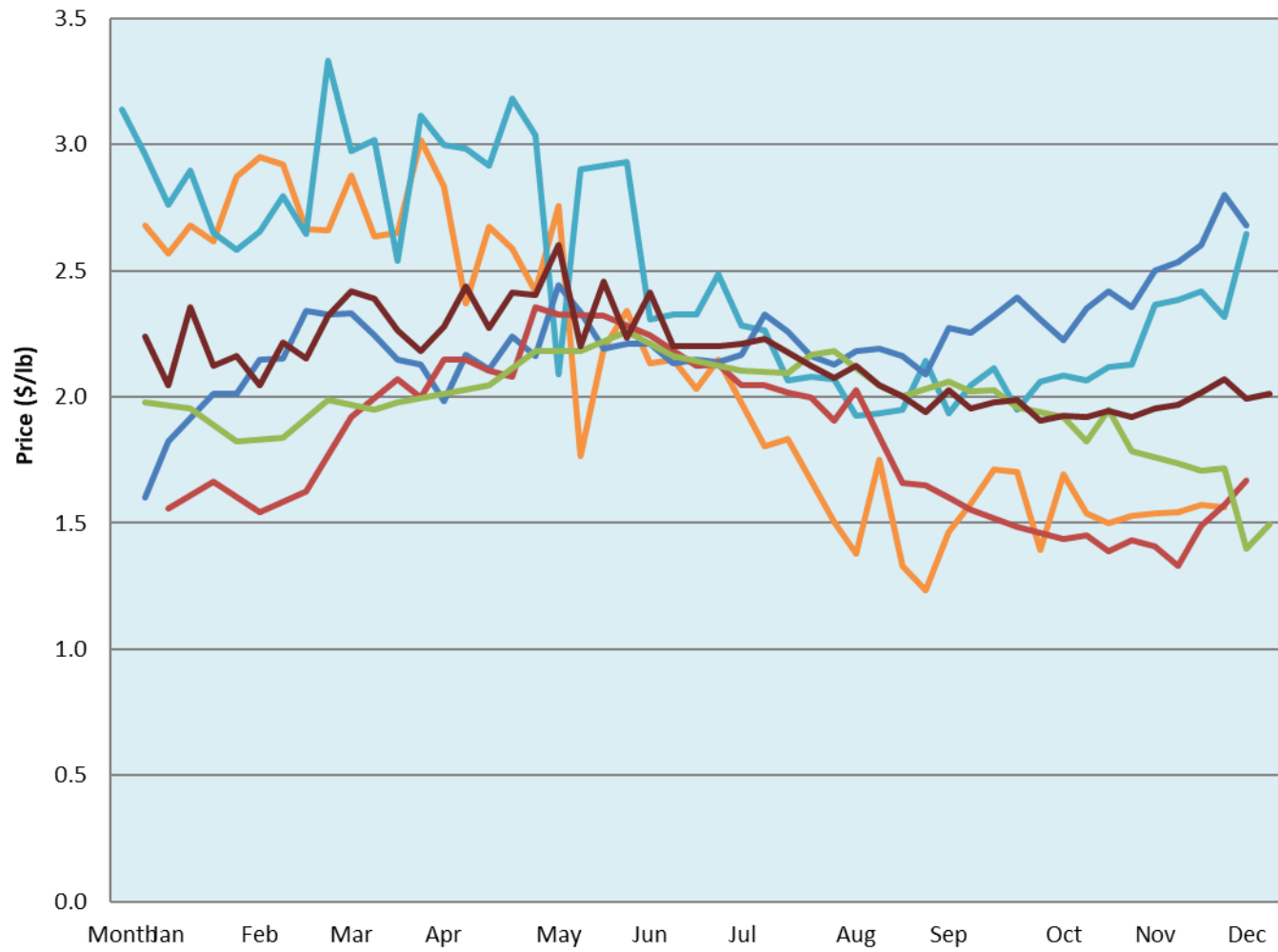
Date	Sale	Lambs (\$/lb)			Lambs (\$/lb)			Lambs (\$/lb)			Sheep(\$/lb): Bred ewes \$/hd		Total Head		
		Weight (lbs)	Head	low - high	Weight (lbs)	Head	low - high	Weight (lbs)	Head	low - high	low - high				
05-Dec-22	Beaver Hill <a href="http://www.beaverhillauctions.com">www.beaverhillauctions.com</a>	0-54: wool	-	2.06 - 2.56	70-85: wool	-	1.92 - 2.35	86-105:wool	-	1.60 - 2.06	Ewes: wool	1.18 - 1.55	1480		
		0-54: hair	-	1.80 - 2.25				86-105:hair			-	1.60 - 1.80		Rams: wool	1.25 - 1.55
		55-69: wool	-	2.10 - 2.59	70-85: hair	-	1.90 - 2.25	106+:wool	-	1.55 - 1.78	Rams: hair	1.28 - 1.57			
		55-69: hair	-	1.90 - 2.31				106+:hair			-	1.10 - 1.67		Bred Ewes	1.75 - 2.90
			-								-			Ewe&Lamb(s)	0.00 - 0.00
No sale this week	VJV Westlock <a href="http://www.vjvauction.com">www.vjvauction.com</a>	0-69: wool	-	- - -	70-85: wool	-	- - -	86-105: wool	-	- - -	Ewes: wool	- - -	-		
			-			-		86-105: hair	-	- - -	Ewes: hair	- - -			
			-			-			106+: wool	-	- - -	Rams: wool		- - -	
		0-69: hair	-	- - -	70-85: hair	-	- - -	106+: hair	-	- - -	Rams: hair	- - -			
			-			-				-	- - -	Bred Ewes:wool		- - -	
06-Dec-22	Olds Auction <a href="http://www.oldsauktion.com">www.oldsauktion.com</a>	30-50	-	1.68 - 1.81	70-80	-	1.8 - 2.25	90-100	-	1.77 - 1.94	Ewes	0.85 - 1.12	168  (incl.goats)		
		50-60	-	2.08 - 2.23	80-90	-	1.85 - 2.02	100-110	-	1.6 - 1.82	Rams	1.27 - 1.61			
		60-70	-	2.15 - 2.37				110+	-	1.29 - 1.58	Bred Ewes	- - -			
03-Dec-22	Picture Butte <a href="http://www.picturebutteauction.ca">www.picturebutteauction.ca</a>							Feeder	-	2.02 - 2.25	Slaughter Ewes	0.90 - 1.01	-		
								Slaughter	-	1.43 - 1.75	Feeder Ewes	- - -			
											Ewe&lamb(s)	- - -			
											Bred ewes	- - -			
										Rams	- - -				

**Ontario Live Animal Markets**

05-Dec-22	OSI <a href="http://www.ontariosheep.org">www.ontariosheep.org</a>	0-50	21	2.50 - 3.20	65-80	603	2.60 - 3.65	95-110	234	2.1 - 2.40	Sheep	1.21 - 2.00	2041
		50-64	205	3.2 - 4.30	80-95	237	2.40 - 2.80	110+	38	2.175 - 2.31			
06-Dec-22	OLEX <a href="http://www.ontariosheep.org">www.ontariosheep.org</a>	0-50	42	3.05 - 4.60	65-79	410	2.50 - 3.85	95-109	777	2.33 - 2.60	Sheep	1.25 - 2.10	2989
		50-64	356	3.38 - 4.90	80-94	472	2.38 - 2.75	110+	266	2.10 - 2.30			
05-Dec-22	Embrun <a href="http://www.ontariosheep.org">www.ontariosheep.org</a>	0-50	26	2.30 - 3.35	65-79	217	2.4 - 2.95	95-109	33	2.1 - 2.38	Sheep	1.18 - 1.56	695
		50-64	78	2.80 - 3.35	80-94	256	2.25 - 2.75	110+	20	1.85 - 2.32			
01-Dec-22	Brussels <a href="http://www.ontariosheep.org">www.ontariosheep.org</a>	0-50	12	1 - 3.05	65-79	88	2.7 - 3.55	95-109	152	2.275 - 2.78	Sheep	1.48 - 2.20	561
		50-64	27	3.1 - 3.40	80-94	125	2.525 - 3.13	110+	60	1.68 - 1.90			

**Alberta Lamb Producers does not endorse individual markets or verify prices provided.**

## Trends\* in auction price for heavy lambs in Alberta



— 2022   
 — 2021   
 — 2020   
 — 2019   
 — 2018   
 — 5 yr ave

\*Due to differences among auctions, prices are reported as 'trends' rather than averages.  
 This graph is updated on weeks with two or more markets reporting prices.