

Alberta Live Animal Markets: Visit individual market websites for more information about applicable auction fees and upcoming sales.

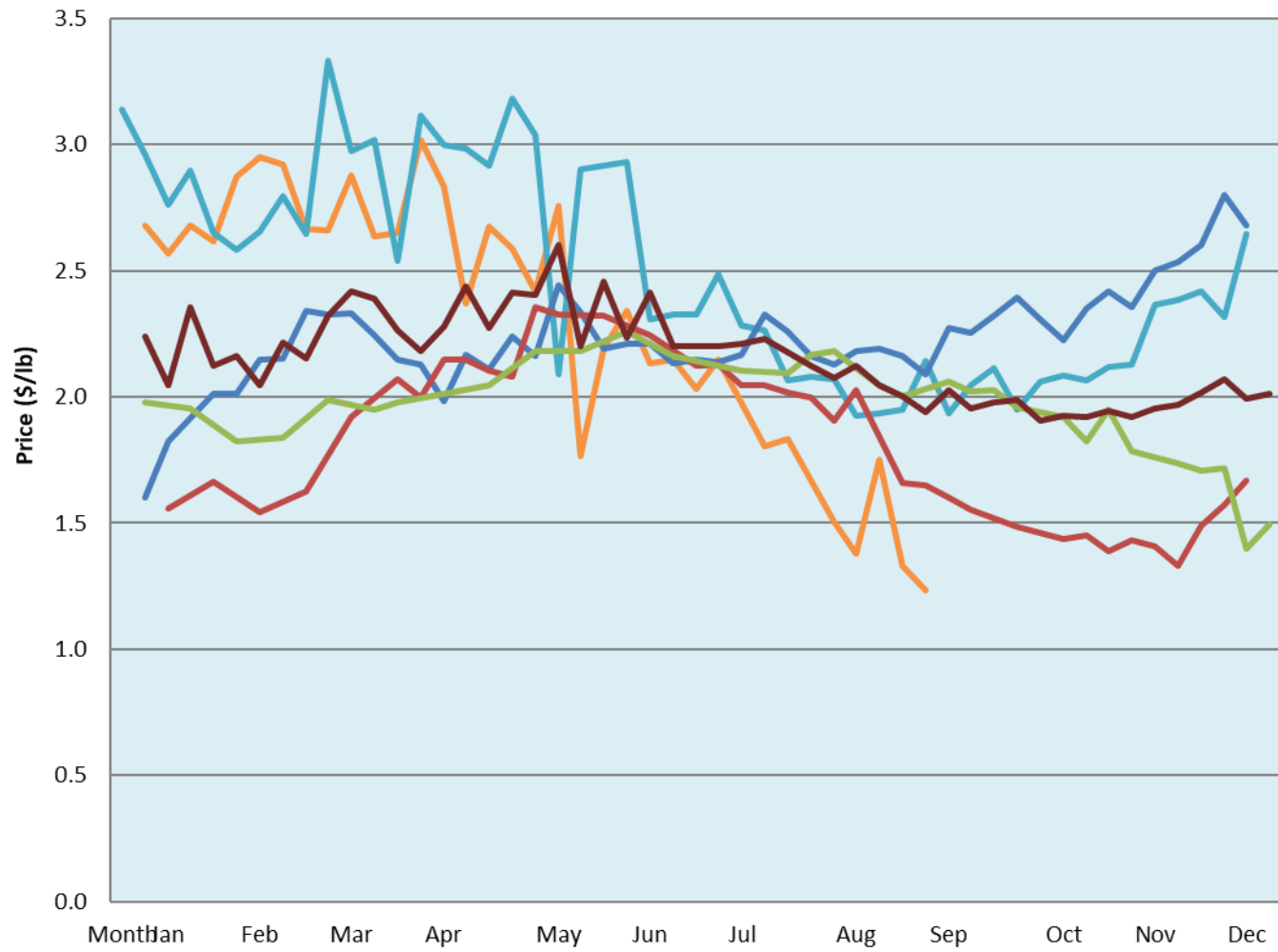
Date	Sale	Lambs (\$/lb)			Lambs (\$/lb)			Lambs (\$/lb)			Sheep(\$/lb): Bred ewes \$/hd		Total Head		
		Weight (lbs)	Head	low - high	Weight (lbs)	Head	low - high	Weight (lbs)	Head	low - high	low - high				
No sale this week	Beaver Hill www.beaverhillauctions.com	0-54: wool	-	0.00 - 0.00	70-85: wool	-	0.00 - 0.00	86-105:wool	-	0.00 - 0.00	Ewes: wool	0.00 - 0.00	0		
		0-54: hair	-	0.00 - 0.00				86-105:hair			-	0.00 - 0.00		Ewes: hair	0.00 - 0.00
		55-69: wool	-	0.00 - 0.00	70-85: hair	-	0.00 - 0.00	106+:wool	-	0.00 - 0.00	Rams: wool	0.00 - 0.00			
		55-69: hair	-	0.00 - 0.00				106+:hair			-	0.00 - 0.00		Rams: hair	0.00 - 0.00
			-								-			Bred Ewes	0.00 - 0.00
					-			-		Ewe&Lamb(s)	0.00 - 0.00				
No sale this week	VJV Westlock www.vjvauction.com	0-69: wool	-	- - -	70-85: wool	-	- - -	86-105: wool	-	- - -	Ewes: wool	- - -	-		
			-					86-105: hair			-	- - -		Ewes: hair	- - -
			-		70-85: hair	-	- - -	106+: wool	-	- - -	Rams: wool	- - -			
		0-69: hair	-	- - -				106+: hair			-	- - -		Rams: hair	- - -
			-								-			Bred Ewes:wool	- - -
				-			-		Ewe&Lamb:hair	- - -					
06-Sep-22	Olds Auction www.oldsauktion.com	30-50	-	1.6 - 1.81	70-80	-	1.45 - 1.65	90-100	-	1.18 - 1.59	Ewes	0.73 - 1.19	157 (incl.goats)		
		50-60	-	1.55 - 1.75	80-90	-	1.4 - 1.65	100-110	-	1.31 - 1.51	Rams	1.06 - 1.25			
		60-70	-	1.59 - 1.77				110+	-	1.13 - 1.34	Bred Ewes	- - -			
Information unavailable	Picture Butte www.picturebutteauction.ca							Feeder	-	- - -	Slaughter Ewes	- - -	-		
								Slaughter	-	- - -	Feeder Ewes	- - -			
											Ewe&lamb(s)	- - -			
											Bred ewes	- - -			
										Rams	- - -				

Ontario Live Animal Markets

05-Sep-22	OSI www.ontariosheep.org	0-50	23	1.75 - 2.18	65-80	124	2.20 - 2.33	95-110	103	1.6 - 1.93	Sheep	1.32 - 1.83	1126
		50-64	38	2.3 - 2.40	80-95	167	1.85 - 2.25	110+	2	1.65 - 1.95			
06-Sep-22	OLEX www.ontariosheep.org	0-50	101	2.75 - 3.35	65-79	246	2.25 - 2.80	95-109	524	1.75 - 1.98	Sheep	1.48 - 2.18	1750
		50-64	101	2.20 - 2.80	80-94	352	2.05 - 2.35	110+	161	1.65 - 1.90			
05-Sep-22	Embrun www.ontariosheep.org	0-50	10	1.65 - 2.35	65-79	195	2.14 - 2.36	95-109	38	2 - 2.35	Sheep	0.87 - 1.35	525
		50-64	83	2.10 - 2.32	80-94	135	2.1 - 2.55	110+	4	1.8 - 2.30			
01-Sep-22	Brussels www.ontariosheep.org	0-50	18	2.05 - 2.85	65-79	118	2.25 - 2.58	95-109	81	1.74 - 1.94	Sheep	1.40 - 1.95	518
		50-64	45	2.4 - 2.90	80-94	130	1.98 - 2.20	110+	12	1.7 - 1.74			

Alberta Lamb Producers does not endorse individual markets or verify prices provided.

Trends* in auction price for heavy lambs in Alberta



— 2022 — 2021 — 2020 — 2019 — 2018 — 5 yr ave

*Due to differences among auctions, prices are reported as 'trends' rather than averages.
This graph is updated on weeks with two or more markets reporting prices.