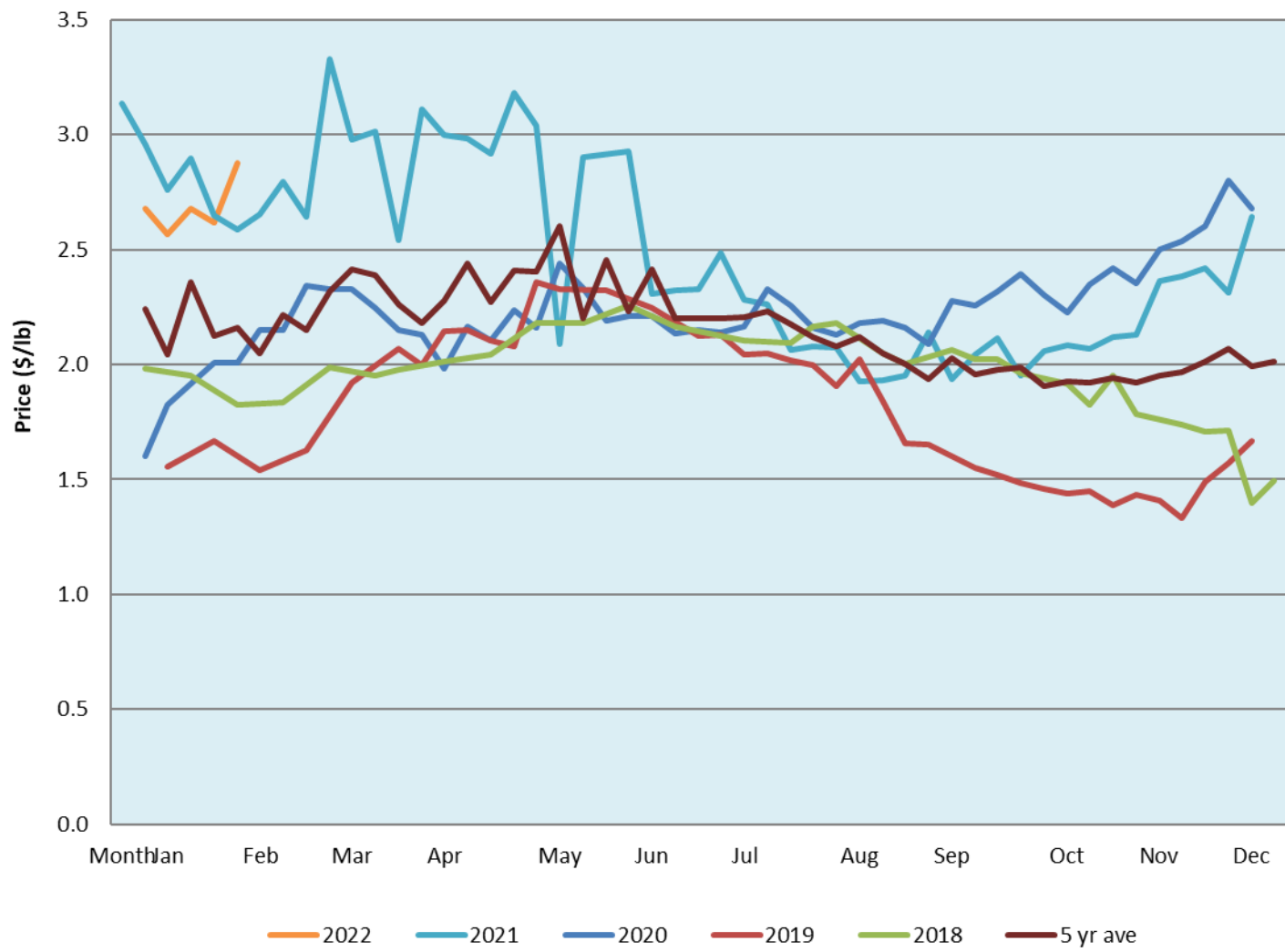


Alberta Live Animal Markets: Visit individual market websites for more information about applicable auction fees and upcoming sales

Date	Sale	Lambs (\$/lb)			Lambs (\$/lb)			Lambs (\$/lb)			Sheep(\$/lb): Bred ewes \$/hd		Total Head		
		Weight (lbs)	Head	low - high	Weight (lbs)	Head	low - high	Weight (lbs)	Head	low - high	low - high	low - high			
No sale this week	Beaver Hill www.beaverhillauctions.com	0-54: wool	-	0.00 - 0.00	70-85: wool	-	0.00 - 0.00	86-105:wool	-	0.00 - 0.00	Ewes: wool	0.00 - 0.00	0		
		0-54: hair	-	0.00 - 0.00				86-105:hair			-	0.00 - 0.00		Ewes: hair	0.00 - 0.00
		55-69: wool	-	0.00 - 0.00	70-85: hair	-	0.00 - 0.00	106+:wool	-	0.00 - 0.00	Rams: wool	0.00 - 0.00			
		55-69: hair	-	0.00 - 0.00				106+:hair			-	0.00 - 0.00		Rams: hair	0.00 - 0.00
			-								-			Bred Ewes	0.00 - 0.00
					-			-		Ewe&Lamb(s)	0.00 - 0.00				
No sale this week	VJV Westlock www.vjvauction.com	0-69: wool	-	- - -	70-85: wool	-	- - -	86-105: wool	-	- - -	Ewes: wool	- - -	-		
			-				-	86-105: hair	-	- - -	Ewes: hair	- - -			
			-				-		-		Rams: wool	- - -			
		0-69: hair	-	- - -	70-85: hair	-	- - -	106+: wool	-	- - -	Rams: hair	- - -			
			-				-	106+: hair	-	- - -	Bred Ewes:wool	- - -			
					-		-	- - -	Ewe&Lamb:hair	- - -					
8-Feb-22	Olds Auction www.oldsauktion.com	30-50	-	2.3 - 2.69	70-80	-	2.35 - 3.68	90-100	-	3.09 - 3.13	Ewes	1.45 - 1.76	157 <small>(incl.goats)</small>		
		50-60	-	3.1 - 3.46	80-90	-	3.07 - 3.32	100-110	-	2.7 - 2.83	Rams	1.56 - 1.67			
		60-70	-	2.7 - 3.84				110+	-	2.77 - 3.07	Bred Ewes	- - -			
5-Feb-22	Picture Butte www.picturebutteauction.ca							Feeder	-	2.9 - 3.07	Slaughter Ewes	1.40 - 1.58	-		
								Slaughter	-	2.77 - 2.89	Feeder Ewes	- - -			
											Ewe&lamb(s)	- - -			
											Bred ewes	- - -			
												Rams		1.50 - 1.62	
Ontario Live Animal Markets															
7-Feb-22	OSI www.ontariosheep.org	0-50	14	3.50 - 3.90	65-80	160	4.15 - 4.33	95-110	61	3.34 - 3.50	Sheep	1.80 - 2.40	776		
		50-64	39	3.9 - 4.29	80-95	98	3.50 - 4.16	110+	31	3.14 - 3.25					
8-Feb-22	OLEX www.ontariosheep.org	0-50	21	4.50 - 5.10	65-79	319	3.73 - 4.20	95-109	577	3.25 - 3.55	Sheep	1.50 - 2.65	2085		
		50-64	243	4.23 - 4.65	80-94	272	3.08 - 3.70	110+	431	2.93 - 3.35					
7-Feb-22	Embrun www.ontariosheep.org	0-50	6	1.40 - 2.10	65-79	63	4.05 - 4.25	95-109	63	3.25 - 3.85	Sheep	1.20 - 2.00	267		
		50-64	24	3.90 - 4.55	80-94	63	3.7 - 4.20	110+	21	2.45 - 3.60					
3-Feb-22	Brussels www.ontariosheep.org	0-50	0	0 - 0.00	65-79	17	3.9 - 4.28	95-109	118	3.47 - 3.53	Sheep	1.95 - 2.75	270		
		50-64	18	4.05 - 4.27	80-94	55	3.49 - 3.75	110+	1	3.4 - 3.40					
Alberta Lamb Producers does not endorse individual markets or verify prices provided.															

Trends* in auction price for heavy lambs in Alberta



*Due to differences among auctions, prices are reported as 'trends' rather than averages. This graph is updated on weeks with two or more markets reporting prices.