

**Alberta Live Animal Markets: Visit individual market websites for more information about applicable auction fees and upcoming sales.**

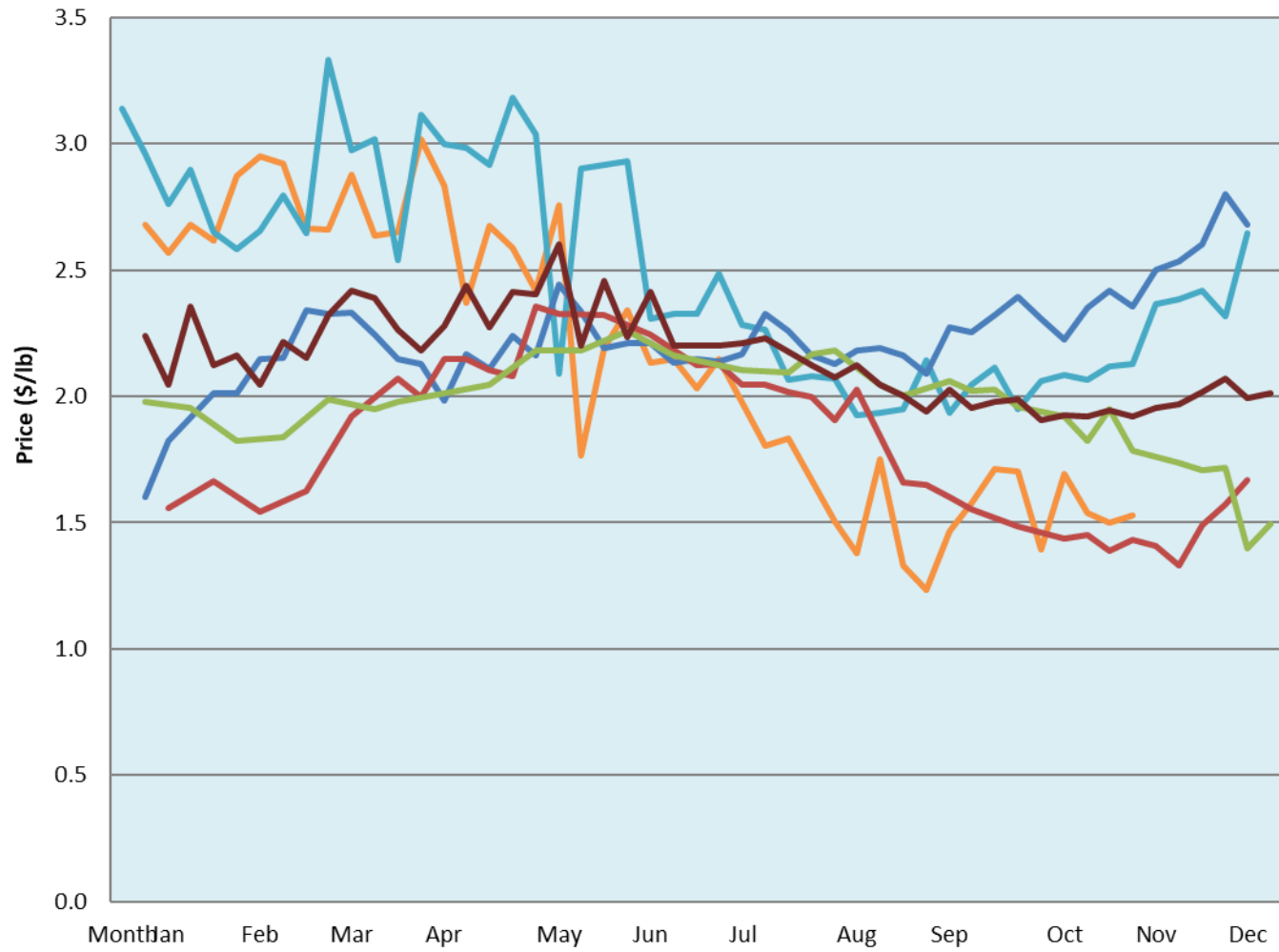
Date	Sale	Lambs (\$/lb)			Lambs (\$/lb)			Lambs (\$/lb)			Sheep(\$/lb): Bred ewes \$/hd		Total Head		
		Weight (lbs)	Head	low - high	Weight (lbs)	Head	low - high	Weight (lbs)	Head	low - high	low - high	low - high			
07-Nov-22	Beaver Hill <a href="http://www.beaverhillauctions.com">www.beaverhillauctions.com</a>	0-54: wool	-	2.00 - 2.30	70-85: wool	-	1.87 - 2.31	86-105:wool	-	1.65 - 2.05	Ewes: wool	0.80 - 1.30	1453		
		0-54: hair	-	1.65 - 2.05				86-105:hair			-	1.62 - 1.84		Ewes: hair	0.82 - 1.42
			-					106+:wool			-	1.50 - 1.66		Rams: wool	1.12 - 1.25
		55-69: wool	-	2.00 - 2.35	70-85: hair	-	1.80 - 2.00		Bred Ewes	1.95 - 2.50					
		55-69: hair	-	1.80 - 2.05				106+:hair	-	0.82 - 1.60	Ewe&Lamb(s)	0.00 - 0.00			
-	Ewes: wool		- - -												
No sale this week	VJV Westlock <a href="http://www.vjvauction.com">www.vjvauction.com</a>	0-69: wool	-	- - -	70-85: wool	-	- - -	86-105: wool	-	- - -	Ewes: hair	- - -	-		
			-					86-105: hair			-	- - -		Rams: wool	- - -
			-					106+: wool			-	- - -		Rams: hair	- - -
		0-69: hair	-	- - -	70-85: hair	-	- - -		Bred Ewes:wool	- - -					
			-						106+: hair	-				- - -	Ewe&Lamb:hair
		-	Ewes: wool	- - -											
08-Nov-22	Olds Auction <a href="http://www.oldsauktion.com">www.oldsauktion.com</a>	30-50	-	1.63 - 1.81	70-80	-	1.81 - 2.17	90-100	-	1.69 - 1.96	Ewes	1.05 - 1.38	192  (incl.goats)		
		50-60	-	1.91 - 1.94	80-90	-	1.76 - 1.91	100-110	-	1.55 - 1.74	Rams	1.13 - 1.35			
		60-70	-	1.88 - 2.14				110+	-	1.35 - 1.61	Bred Ewes	- - -			
Information unavailable	Picture Butte <a href="http://www.picturebutteauction.ca">www.picturebutteauction.ca</a>							Feeder	-	- - -	Slaughter Ewes	- - -	-		
								Slaughter	-	- - -	Feeder Ewes	- - -			
											Ewe&lamb(s)	- - -			
											Bred ewes	- - -			
											Rams	- - -			

**Ontario Live Animal Markets**

07-Nov-22	OSI <a href="http://www.ontariosheep.org">www.ontariosheep.org</a>	0-50	53	3.00 - 3.35	65-80	226	2.67 - 2.94	95-110	137	2.2 - 2.38	Sheep	1.40 - 2.05	1389
		50-64	126	3.1 - 3.18	80-95	320	2.22 - 2.58	110+	46	1.49 - 2.25			
08-Nov-22	OLEX <a href="http://www.ontariosheep.org">www.ontariosheep.org</a>	0-50	26	0.50 - 3.90	65-79	437	2.38 - 3.03	95-109	707	2.03 - 2.35	Sheep	1.60 - 2.20	2474
		50-64	57	3.20 - 4.00	80-94	530	2.15 - 2.43	110+	194	1.85 - 2.28			
07-Nov-22	Embrun <a href="http://www.ontariosheep.org">www.ontariosheep.org</a>	0-50	2	1.80 - 2.40	65-79	177	2.45 - 2.72	95-109	65	2.05 - 2.50	Sheep	0.99 - 1.34	462
		50-64	40	2.62 - 2.95	80-94	99	2.15 - 2.54	110+	13	1.65 - 2.15			
03-Nov-22	Brussels <a href="http://www.ontariosheep.org">www.ontariosheep.org</a>	0-50	1	2 - 2.00	65-79	62	2.725 - 3.13	95-109	68	2.16 - 2.48	Sheep	1.20 - 1.93	417
		50-64	42	2.875 - 3.19	80-94	142	2.425 - 2.90	110+	8	2 - 2.33			

**Alberta Lamb Producers does not endorse individual markets or verify prices provided.**

### Trends\* in auction price for heavy lambs in Alberta



— 2022 — 2021 — 2020 — 2019 — 2018 — 5 yr ave

\*Due to differences among auctions, prices are reported as 'trends' rather than averages.  
This graph is updated on weeks with two or more markets reporting prices.