

Alberta Live Animal Markets: Visit individual market websites for more information about applicable auction fees and upcoming sales.

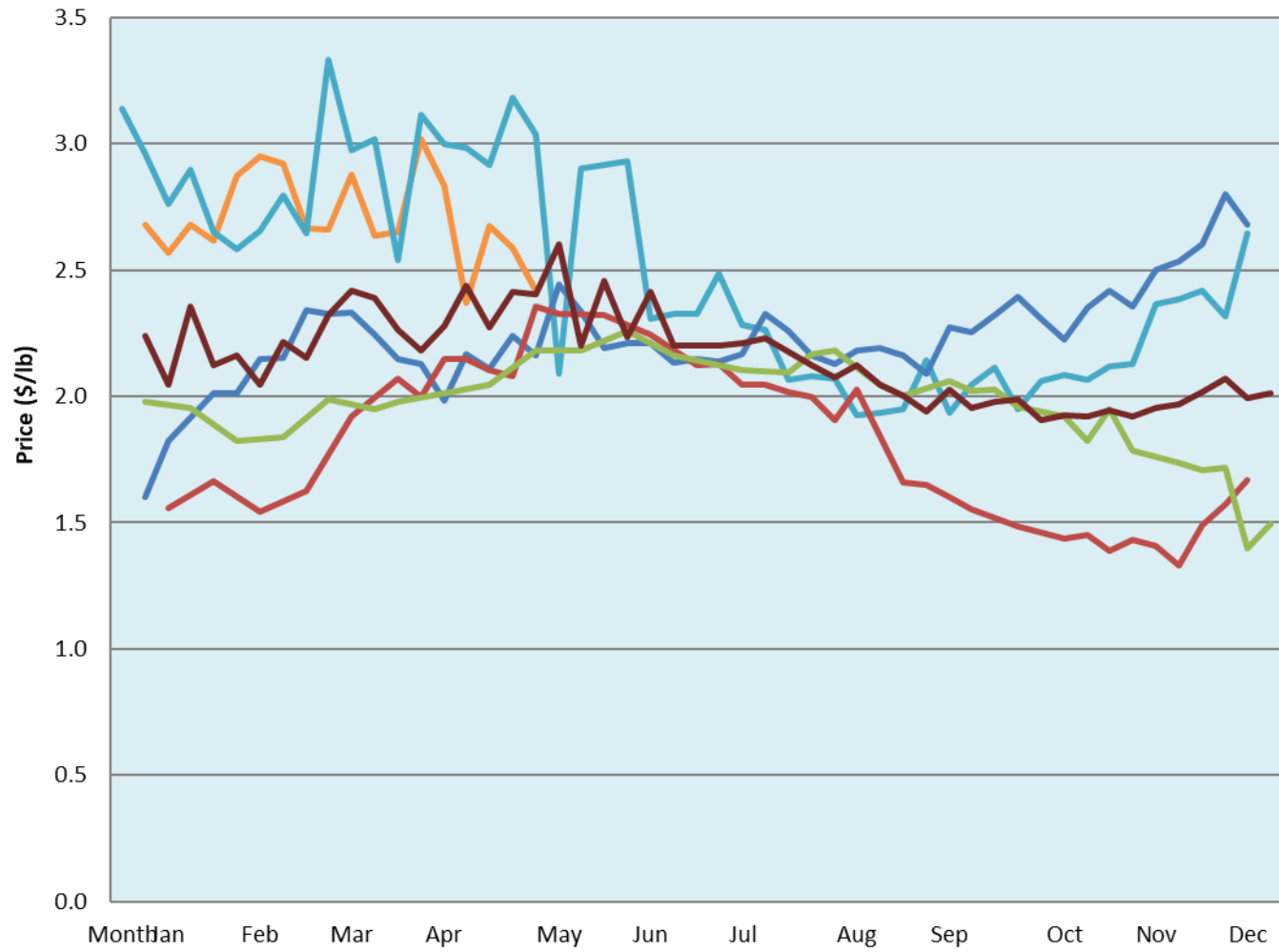
Date	Sale	Lambs (\$/lb)			Lambs (\$/lb)			Lambs (\$/lb)			Sheep(\$/lb): Bred ewes \$/hd		Total Head		
		Weight (lbs)	Head	low - high	Weight (lbs)	Head	low - high	Weight (lbs)	Head	low - high	low - high	low - high			
No sale this week	Beaver Hill www.beaverhillauctions.com	0-54: wool	-	0.00 - 0.00	70-85: wool	-	0.00 - 0.00	86-105:wool	-	0.00 - 0.00	Ewes: wool	0.00 - 0.00	0		
		0-54: hair	-	0.00 - 0.00				86-105:hair			-	0.00 - 0.00		Ewes: hair	0.00 - 0.00
		55-69: wool	-	0.00 - 0.00	70-85: hair	-	0.00 - 0.00	106+:wool	-	0.00 - 0.00	Rams: wool	0.00 - 0.00			
		55-69: hair	-	0.00 - 0.00				106+:hair			-	0.00 - 0.00		Rams: hair	0.00 - 0.00
			-								-			Bred Ewes	0.00 - 0.00
								-		Ewe&Lamb(s)	0.00 - 0.00				
No sale this week	VJV Westlock www.vjvauction.com	0-69: wool	-	- - -	70-85: wool	-	- - -	86-105: wool	-	- - -	Ewes: wool	- - -	-		
			-					86-105: hair			-	- - -		Ewes: hair	- - -
		0-69: hair	-	- - -	70-85: hair	-	- - -	106+: wool	-	- - -	Rams: wool	- - -			
			-					106+: hair			-	- - -		Rams: hair	- - -
			-								-			Bred Ewes:wool	- - -
								-		Ewe&Lamb:hair	- - -				
10-May-22	Olds Auction www.oldsauktion.com	30-50	-	2.24 - 3.07	70-80	-	2.53 - 3.18	90-100	-	3.04 - 3.13	Ewes	0.85 - 1.24	111 (incl.goats)		
		50-60	-	3.22 - 3.41	80-90	-	3.18 - 3.33	100-110	-	2.83 - 2.96	Rams	1.62 - 1.81			
		60-70	-	3.21 - 3.41				110+	-	2.79 - 2.83	Bred Ewes	- - -			
7-May-22	Picture Butte www.picturebutteauction.ca							Feeder	-	2 - 2.35	Slaughter Ewes	1.09 - 1.39	-		
								Slaughter	-	1.89 - 2.16	Feeder Ewes	- - -			
											Ewe&lamb(s)	2.75 - 3.60			
											Bred ewes	- - -			
											Rams	1.33 - 1.59			

Ontario Live Animal Markets

9-May-22	OSI www.ontariosheep.org	0-50	18	2.80 - 4.13	65-80	223	3.40 - 4.13	95-110	75	3.3 - 3.57	Sheep	1.14 - 2.00	1005
		50-64	63	3.75 - 4.13	80-95	101	3.55 - 3.80	110+	18	3.4 - 3.40			
10-May-22	OLEX www.ontariosheep.org	0-50	174	3.20 - 4.45	65-79	508	3.35 - 3.90	95-109	300	3.23 - 3.63	Sheep	0.70 - 1.75	2344
		50-64	224	3.50 - 4.20	80-94	569	3.38 - 3.65	110+	127	2.00 - 3.40			
9-May-22	Embrun www.ontariosheep.org	0-50	4	4.25 - 4.50	65-79	170	3.85 - 4.05	95-109	59	3.77 - 3.95	Sheep	1.20 - 1.76	434
		50-64	26	3.80 - 4.15	80-94	62	3.85 - 4.00	110+	22	2 - 3.75			
5-May-22	Brussels www.ontariosheep.org	0-50	12	3.8 - 4.28	65-79	184	3.58 - 3.77	95-109	94	3.3 - 3.58	Sheep	1.45 - 2.35	611
		50-64	90	3.675 - 3.85	80-94	80	3.57 - 3.70	110+	31	3.25 - 3.40			

Alberta Lamb Producers does not endorse individual markets or verify prices provided.

Trends* in auction price for heavy lambs in Alberta



— 2022
 — 2021
 — 2020
 — 2019
 — 2018
 — 5 yr ave

*Due to differences among auctions, prices are reported as 'trends' rather than averages.
 This graph is updated on weeks with two or more markets reporting prices.