

Alberta Live Animal Markets: Visit individual market websites for more information about applicable auction fees and upcoming sales.

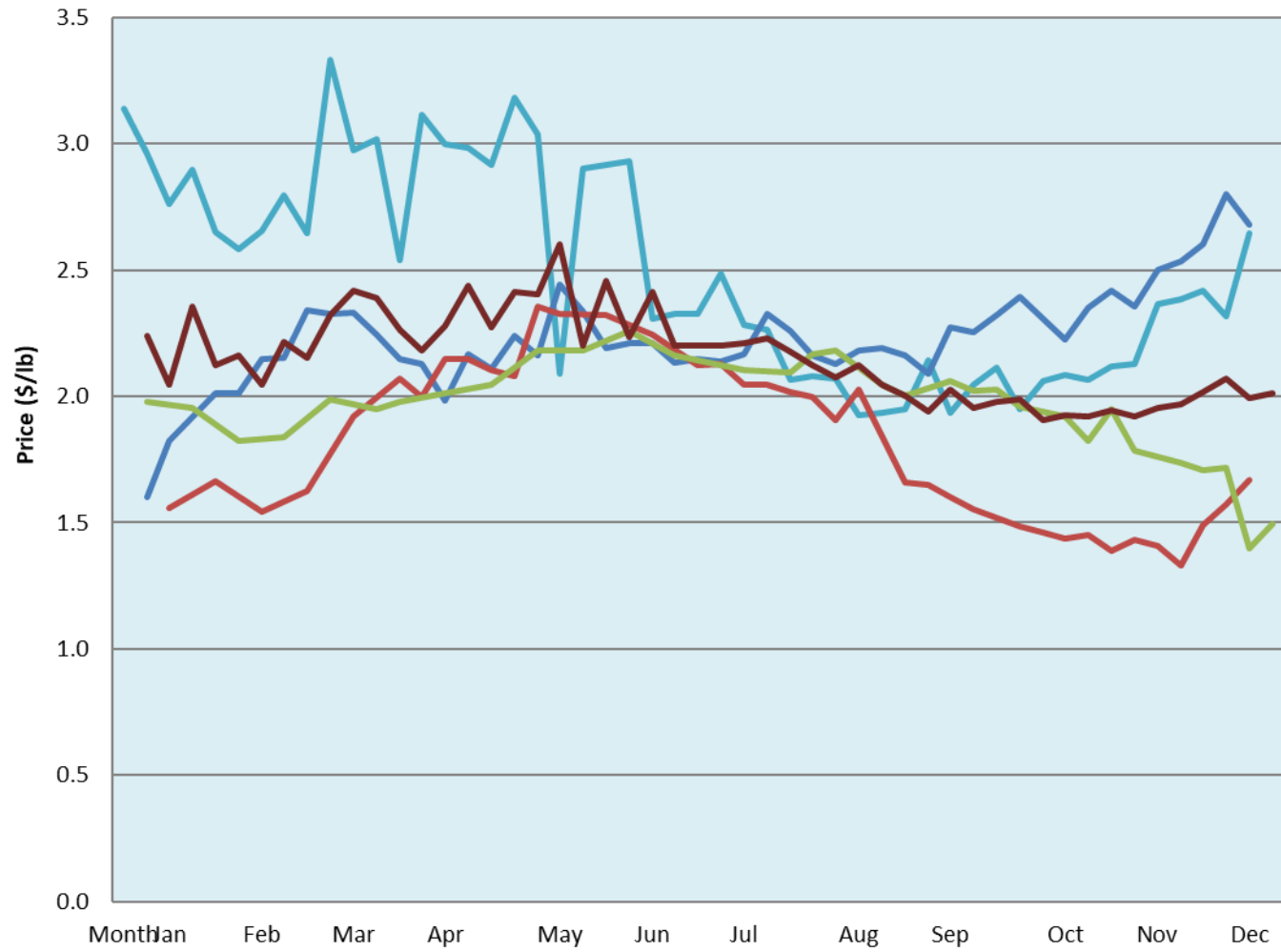
Date	Sale	Lambs (\$/lb)			Lambs (\$/lb)			Lambs (\$/lb)			Sheep(\$/lb): Bred ewes \$/hd		Total Head		
		Weight (lbs)	Head	low - high	Weight (lbs)	Head	low - high	Weight (lbs)	Head	low - high	low - high	low - high			
10-Jan-22	Beaver Hill www.beaverhillauctions.com	0-54: wool	-	3.00 - 4.15	70-85: wool	-	3.40 - 4.05	86-105:wool	-	2.68 - 3.57	Ewes: wool	2.00 - 2.50	798		
		0-54: hair	-	2.80 - 3.75				86-105:hair			-	2.60 - 2.96		Rams: wool	1.85 - 2.50
		55-69: wool	-	3.60 - 4.25	70-85: hair	-	3.40 - 3.80	106+:wool	-	2.50 - 2.91	Rams: hair	1.77 - 1.90			
		55-69: hair	-	2.90 - 3.94				106+:hair			-	1.85 - 2.75		Bred Ewes	3.10 - 4.30
			-					Ewe&Lamb(s)						0.00 - 0.00	
No sale this week	VJV Westlock www.vjvauction.com	0-69: wool	-	- - -	70-85: wool	-	- - -	86-105: wool	-	- - -	Ewes: wool	- - -	-		
			-					86-105: hair	-	- - -	Ewes: hair	- - -			
			-						106+: wool	-	- - -	Rams: wool		- - -	
		0-69: hair	-	- - -	70-85: hair	-	- - -	106+: hair	-	- - -	Rams: hair	- - -			
			-							-	- - -	Bred Ewes:wool		- - -	
11-Jan-22	Olds Auction www.oldsauktion.com	30-50	-	2.39 - 2.58	70-80	-	3.77 - 3.97	90-100	-	2.99 - 3.23	Ewes	1.76 - 2.19	166 (incl.goats)		
		50-60	-	3.5 - 3.95	80-90	-	3.28 - 3.41	100-110	-	2.78 - 2.91	Rams	1.54 - 1.89			
		60-70	-	4.01 - 4.22				110+	-	2.54 - 2.76	Bred Ewes	- - -			
Information unavailable	Picture Butte www.picturebutteauction.ca							Feeder	-	- - -	Slaughter Ewes	- - -	-		
								Slaughter	-	- - -	Feeder Ewes	- - -			
											Ewe&lamb(s)	- - -			
											Bred ewes	- - -			
										Rams	-				

Ontario Live Animal Markets

10-Jan-22	OSI www.ontariosheep.org	0-50	7	1.50 - 4.30	65-80	118	3.83 - 4.16	95-110	50	3.225 - 3.48	Sheep	2.01 - 2.65	629
		50-64	36	3.975 - 4.45	80-95	91	3.53 - 3.80	110+	26	2.92 - 3.05			
11-Jan-22	OLEX www.ontariosheep.org	0-50	89	4.75 - 5.10	65-79	323	4.00 - 4.63	95-109	812	2.99 - 3.18	Sheep	1.75 - 2.50	2453
		50-64	187	4.20 - 4.95	80-94	411	3.18 - 3.73	110+	403	2.85 - 3.10			
10-Jan-22	Embrun www.ontariosheep.org	0-50	17	3.25 - 4.55	65-79	98	3.9 - 4.30	95-109	94	3 - 3.35	Sheep	1.30 - 1.70	457
		50-64	40	3.80 - 4.40	80-94	127	3.5 - 4.25	110+	60	2.65 - 3.35			
6-Jan-22	Brussels www.ontariosheep.org	0-50	1	3.25 - 3.25	65-79	59	3.85 - 4.50	95-109	92	3.1 - 3.29	Sheep	2.00 - 3.00	410
		50-64	23	4.55 - 4.58	80-94	72	3.29 - 3.70	110+	58	3 - 3.10			

Alberta Lamb Producers does not endorse individual markets or verify prices provided.

Trends* in auction price for heavy lambs in Alberta



— 2022 — 2021 — 2020 — 2019 — 2018 — 5 yr ave

*Due to differences among auctions, prices are reported as 'trends' rather than averages.
This graph is updated on weeks with two or more markets reporting prices.